


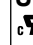

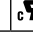







# Series 107

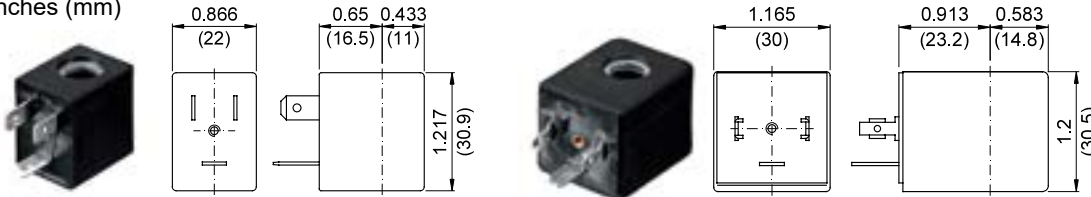
COILS Code ②	Alternating Current						Direct Current				Electrical connection	Connectors
	24V		120V		240V		12V		24V			
Series 3 Width 22mm	U35B c 	30B	U35D c 	30D	U35F c 	30F	U350 c 	300	U351 c 	301	DIN 46244	PG9 code 10348000
Series 4 Width 30mm	-	40B	-	40D	-	40F	U450 c 	400	U451 c 	401	DIN 43650A	PG9 code 10349000

**DESCRIPTION**  
 Class F or H insulation  
 Voltage tolerance ±10%  
 Protection class:  
 IP65 with connector attached  
 IP00 without connector  
 Continuous service ED100%

**OPTIONS**  
 Cable attached  
 Special coil voltage  
 Special coil powers

## OVERALL DIMENSIONS

inches (mm)



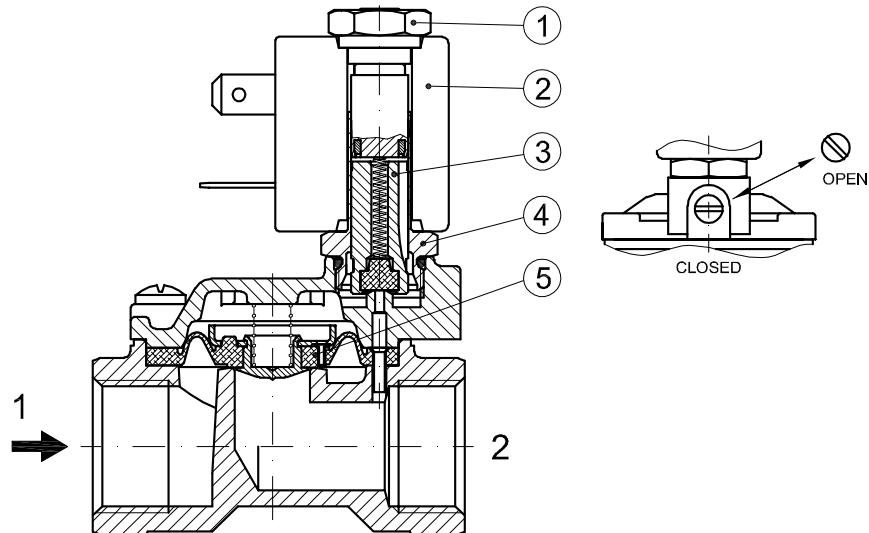
Series 3 Weight 0.11lb (0.05Kg)

Series 4 Weight 0.22lb (0.1Kg)

**FOR COIL SPECIFICATION SEE SECTION 6**

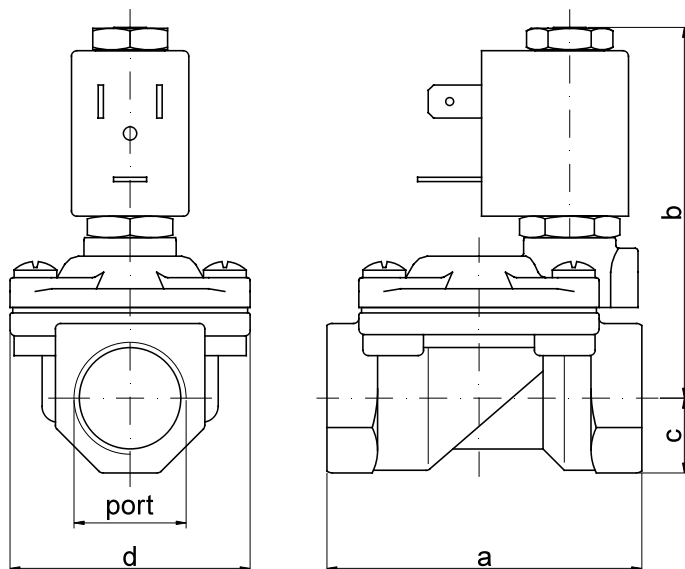
## SPARE PARTS LIST

1. Coil fixing nut
2. Coil
3. Plunger assembly
4. Armature tube assembly
5. Diaphragm assembly



## OVERALL DIMENSIONS

inches (mm)



PORT SIZE	a		b		c		d		weight	
	in	mm	in	mm	in	mm	in	mm	lb	Kg
1/4 Ø0.394 (Ø10)	1.93	49	2.56	65	0.43	11	1.26	32	0.53	0.24
3/8 Ø0.394 (Ø10)	1.93	49	2.56	65	0.43	11	1.26	32	0.51	0.23
3/8 Ø0.472 (Ø12)	2.32	59	2.76	70	0.55	14	1.77	45	0.93	0.42
1/2 Ø0.472 (Ø12)	2.32	59	2.76	70	0.55	14	1.77	45	0.86	0.39
3/4	3.11	79	2.99	76	0.71	18	2.17	55	1.43	0.65
1	3.78	96	3.35	85	0.79	20	2.83	72	2.31	1.05
1-1/4 Ø1.181 (Ø30)	4.69	119	3.62	92	0.98	25	3.35	85	3.75	1.70

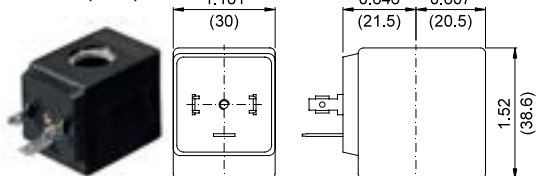


COILS Code ②	Alternating Current						Direct Current				Electrical connection	Connectors
	24V		120V		240V		12V		24V			
Series 2 Width 30mm	U25B c  us	20B	U25D c  us	20D	U25F c  us	20F	U250 c  us	200	U251 c  us	201	DIN 43650A	PG9 code 10349000

**DESCRIPTION**  
 Insulation class F or H  
 Voltage tolerance  $\pm 10\%$   
 Protection class:  
 IP65 with connector attached  
 IP00 without connector  
 Continuous service ED100%

## OVERALL DIMENSIONS

inches (mm)



Series 2 Weight 0.26lb (0.12Kg)

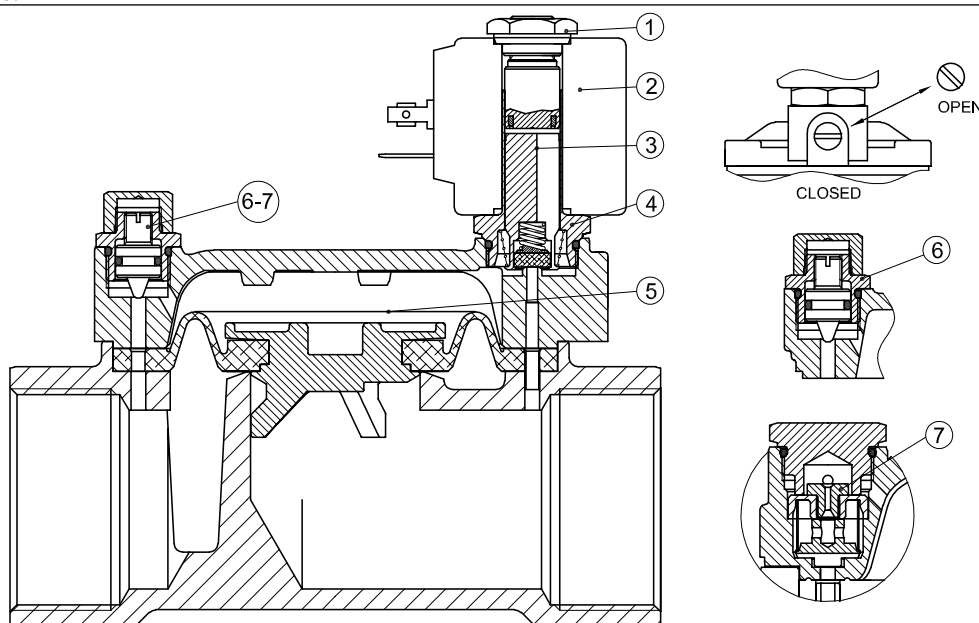
## OPTIONS

Cable attached  
 Special coil voltage  
 Special coil powers

**FOR COIL SPECIFICATION SEE SECTION 6**

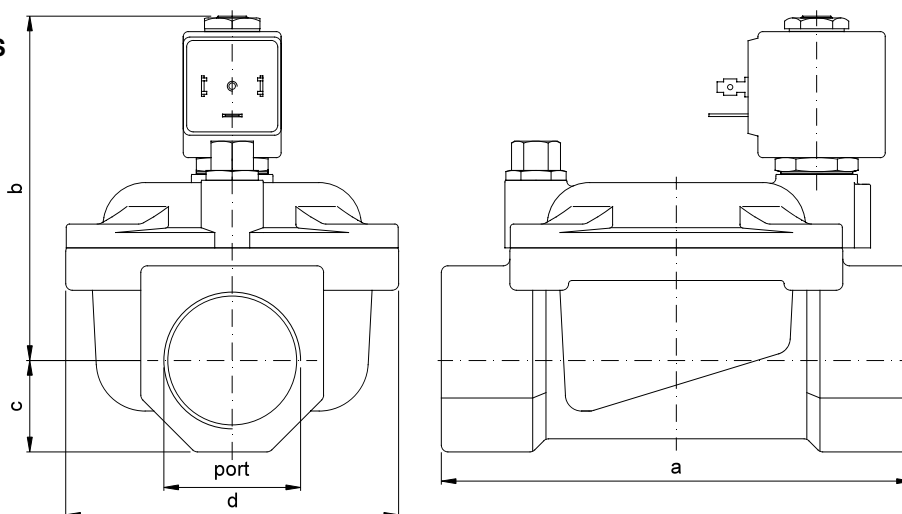
## SPARE PARTS LIST

- Coil fixing nut
- Coil
- Plunger assembly
- Armature tube assembly
- Diaphragm assembly
- Speed control valve
- Water hammering reducer  
 $\varnothing 0.03$ - $\varnothing 0.039$ - $\varnothing 0.04$   
 $(\varnothing 0.8$ - $\varnothing 1.2$ - $\varnothing 1.5)$



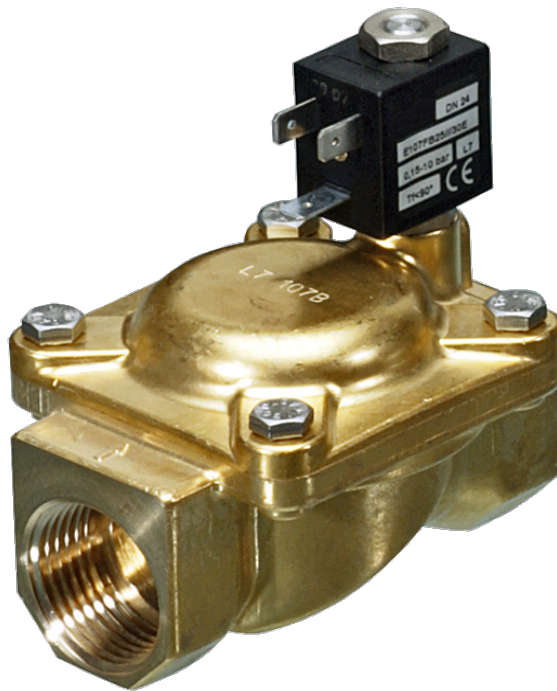
## OVERALL DIMENSIONS

inches (mm)



PORT SIZE	a		b		c		d		weight	
	in	mm	in	mm	in	mm	in	mm	lb	Kg
1-1/4	5.59	142	4.13	105	1.1	28	4.02	102	6.61	3
1-1/2	5.59	142	4.13	105	1.1	28	4.02	102	6.28	2.85
2	6.22	158	4.53	115	1.38	35	4.69	119	9.48	4.3
2-1/2	8.9	226	5.28	134	2.01	51	6.65	169	25.8	11.7
3	8.9	226	5.28	134	2.01	51	6.65	169	21.8	9.9

# 107 Series BSP Thread





## DESCRIPTION

Solenoid valve 2 way normally closed with servo-assisted diaphragm

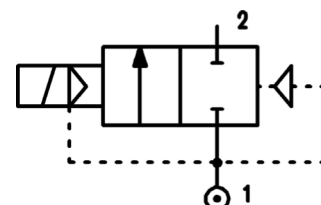
## CONSTRUCTION

Body and cover	Brass
Armature tube	AISI 303
Plunger and core	AISI 430FR
Springs	AISI 302
Seal material	NBR - FPM - EPDM




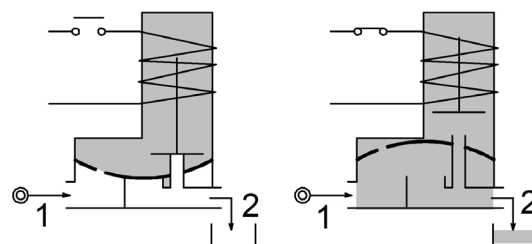
## FEATURES

- Minimum differential pressure 0.15bar
- Maximum allowable pressure PS 25bar<sup>④</sup>
- Maximum fluid viscosity 25cSt (mm<sup>2</sup>/s)
- Ambient temperature: from -10°C to +80°C according to the coil
- Preferred mounting position with vertical coil above



4

- OPTIONS:**
- Manual override
  - Electroless nickel plating
  - Series 7 explosion proof coil according to ATEX - EExmII
  - Version with slow closing diaphragm
  - Version for vacuum applications (air/gas)
  -  us certified coils



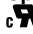
CODE ① ②	Connection G ISO 228	Orifice mm	Kv m <sup>3</sup> /h	Differential pressure bar			Nominal power			Coil		Seal ①	Temp. range °C
				Min	Max		AC Inrush	VA Holding	DC Watt	Series	Width		
E107B...10///...	1/4"	10	1.5	0.15	15	15	12	8	6.5	3	22	NBR=B	-10 +90
E107C...10///...	3/8"	10	1.7	0.15	15	15							
E107C...12///...	3/8"	12	2.2	0.15	15	15							
E107D...12///...	1/2"	12	2.5	0.15	15	15							
E107E...18///...	3/4"	18	5.5	0.15	13	13							
E107F...25///...	1"	25	10.2	0.15	10	10							
E107G...30///...	1" 1/4	30	15	0.15	10	10							
③E107C...12/W/...	3/8"	12	2.2	0.5	25	25	15	11	5	4	30	NBR=B	-10 +90
③E107D...12/W/...	1/2"	12	2.5	0.5	25	25							

- ① Seal
  - ② Coil
  - ③ Reinforced diaphragm
  - ④ The maximum allowable pressure PS for steam 2,5bar (gauge pressure)
- Example: E107DB12///301 NBR seal  
Coil 24V DC

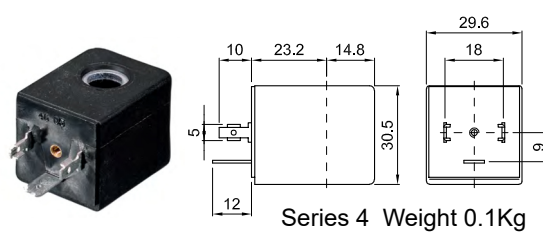
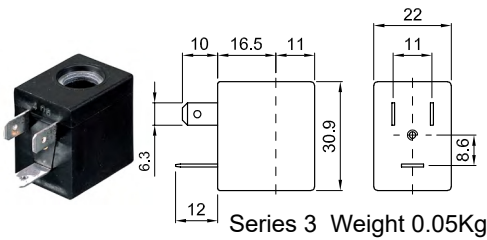
# Series 107

COILS ②	Alternating Current 50/60Hz (V)							Direct Current (V)			Electrical connection	Connectors
	12	24	48	110	220 230	240	380	12	24	48		
Series 3 Width 22	30A	30B	30C	30D	30E	30F	30G	300	301	302	DIN 46244	PG9 code 10348000
Series 4 Width 30	40A	40B	40C	40D	40E	40F	40G	400	401	402	DIN 43650A	PG9 code 10349000

**DESCRIPTION**  
 Class F insulation  
 Voltage tolerance  
 AC +15% -10%  
 DC ± 10%  
 Protection class  
 IP65 with connector fitted  
 IP00 without connector  
 Continuous service ED100%

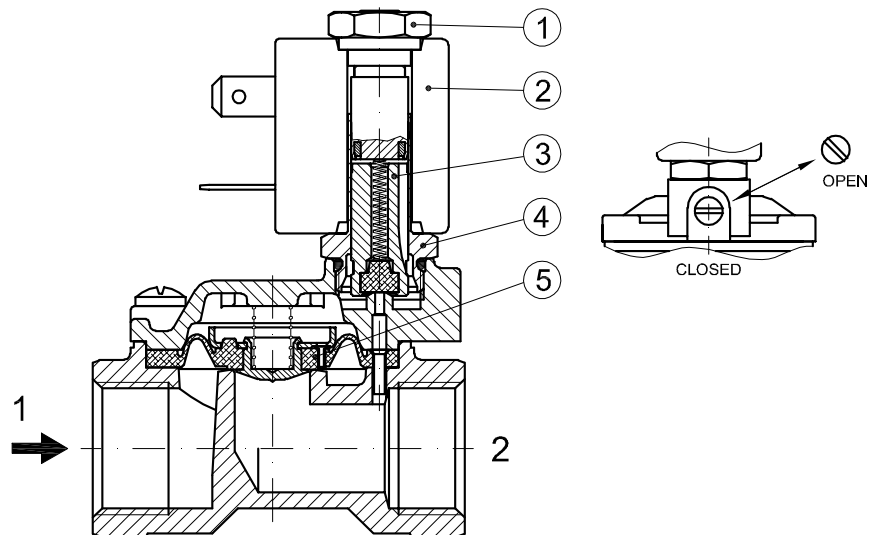
**OPTIONS**  
 Class H insulation  
 Cable attached  
 Special coil voltage  
 Special coil powers  
 us certified coils

(for coil details see section 8)

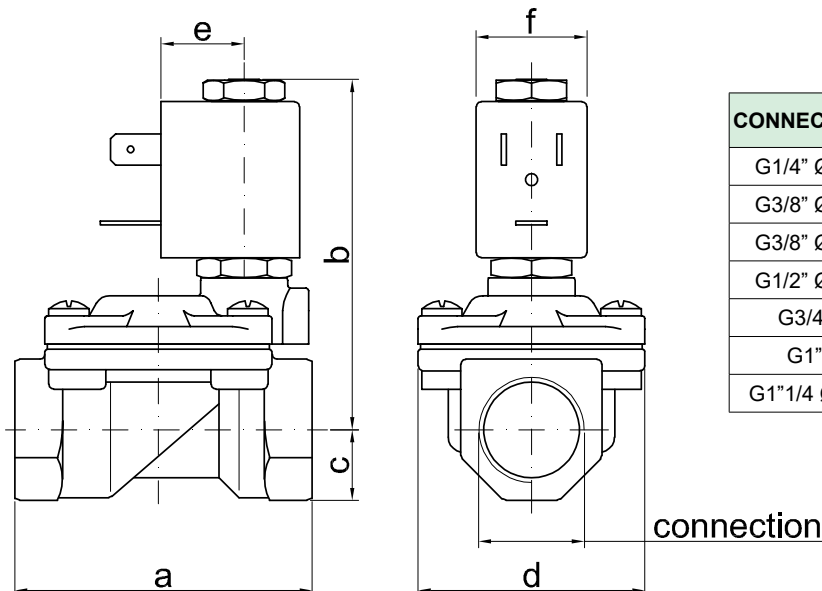


## SPARE PARTS LIST

1. Coil fixing nut
2. Coil
3. Plunger
4. Armature tube with core
5. Diaphragm assembly



## OVERALL DIMENSION



CONNECTION	a	b	c	d	e	f	weight Kg
G1/4" Ø10	49	65	11	32	16	22	0.23
G3/8" Ø10	49	65	11	32	16	22	0.24
G3/8" Ø12	59	70	14	45	16	22	0.42
G1/2" Ø12	59	70	14	45	16	22	0.39
G3/4"	79	76	18	55	16	22	0.65
G1"	96	85	20	72	16	22	1.05
G1 1/4" Ø30	119	92	25	85	16	22	1.70



## DESCRIPTION

Solenoid valve 2 way normally closed with servo-assisted diaphragm

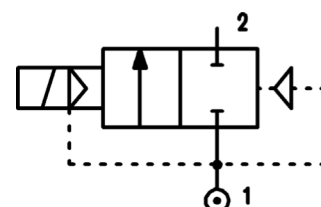
## CONSTRUCTION

Body and cover	Brass
Armature tube	AISI 303
Plunger and core	AISI 430FR
Springs	AISI 302
Seal material	NBR - FPM - EPDM



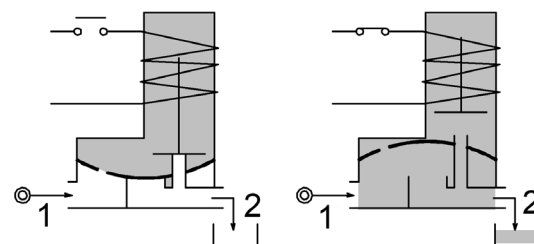
## FEATURES

- Minimum differential pressure 0.15÷3bar
- Maximum allowable pressure PS 20bar<sup>④</sup>
- Maximum fluid viscosity 25cSt (mm<sup>2</sup>/s)
- Ambient temperature: from -10°C to +80°C according to the coil
- Preferred mounting position with vertical coil above



4

- OPTIONS:**
- Manual override
  - Electroless nickel plating
  - Version for vacuum applications (air/gas)
  - us certified coils



CODE ① ②	Connection G ISO 228	Orifice mm	Kv m <sup>3</sup> /h	Differential pressure bar			Nominal power			Coil		Seal ①	Temp. range °C
				Min	Max		AC Inrush	VA Holding	DC Watt	Series	Width		
E107G...37///...	1"1/4	37	18	0.15	10	10	20	15	10	2	30	NBR=B EPDM=E FPM=V	-10 +90 -10 +140 -10 +140
E107H...37///...	1"1/2	37	21	0.15	10	10							
E107I...50///...	2"	50	36	0.15	10	10							
E107MB75///...	2"1/2	75	75	0.3	5	5	20	15	10	2	30	NBR=B	-10 +90
E107RB75///...	3"	75	84	0.3	5	5							
③E107MB75/W/...	2"1/2	75	75	3	15	15							
③E107RB75/W/...	3"	75	84	3	15	15							

- ① Seal
  - ② Coil
  - ③ Reinforced diaphragm
- Example: E107IB50///201 NBR seal  
Coil 24V DC

④ The maximum allowable pressure PS for steam 2,5bar (gauge pressure)

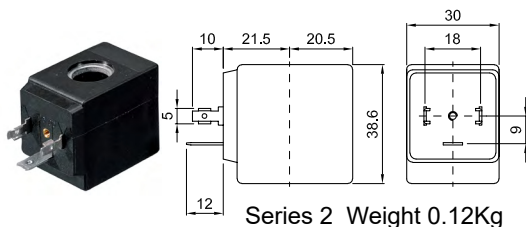
## G2"1/2 e G3" SOLENOID VALVES

For applications with fluids listed in chapter 3 / group 1 of the PED Directive 2014/68 / EU (potentially hazardous or explosive fluids / mixtures) consider a PS value reduced to 15 bar max.

COILS ②	Alternating Current 50/60Hz (V)							Direct Current (V)			Electrical connection	Connectors
	12	24	48	110	220 230	240	380	12	24	48		
Series 2 Width 30	20A	20B	20C	20D	20E	20F	20G	200	201	202	DIN 43650A	PG9 code 10349000

**DESCRIPTION**  
 Class F insulation  
 Voltage tolerance  
 AC +15% -10%  
 DC ± 10%  
 Protection class  
 IP65 with connector fitted  
 IP60 without connector  
 Continuous service ED100%

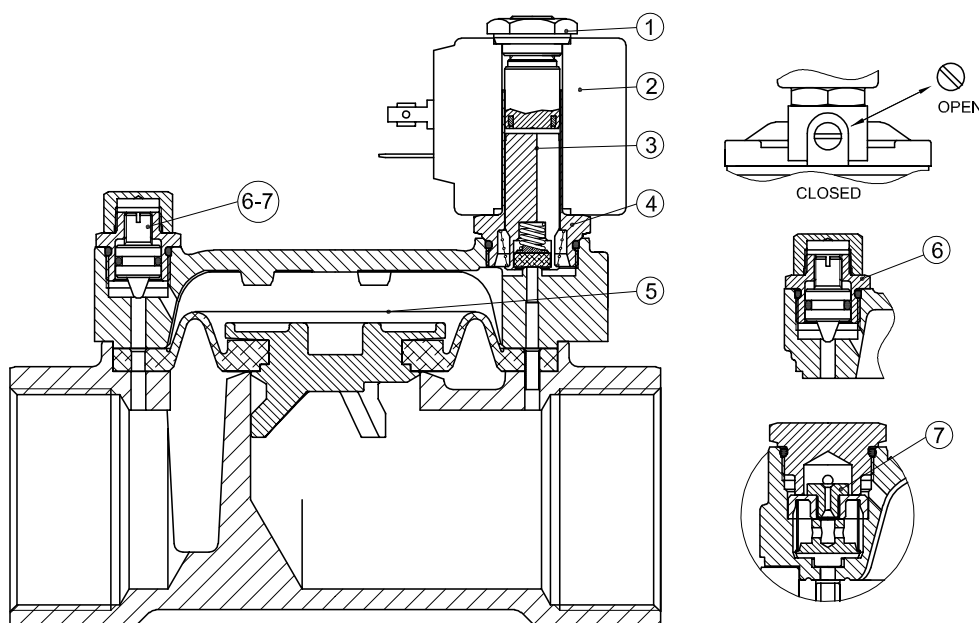
**OPTIONS**  
 Class H insulation  
 Cable attached  
 Special coil voltage  
 Special coil powers  
 CE certified coils



(for coil details see section 8)

### SPARE PARTS LIST

1. Coil fixing nut
2. Coil
3. Plunger
4. Armature tube with core
5. Diaphragm assembly
6. Speed control valve
7. Water hammering reducer  
 $\varnothing 0.8$ - $\varnothing 1.2$ - $\varnothing 1.5$  (G2"1/2-3")



### OVERALL DIMENSION

