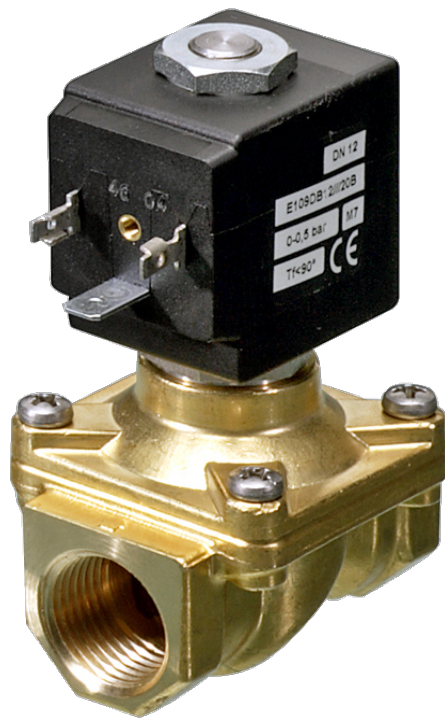


108 Series NPT Thread



DESCRIPTION

Solenoid valve 2 way normally closed with assisted-lift diaphragm

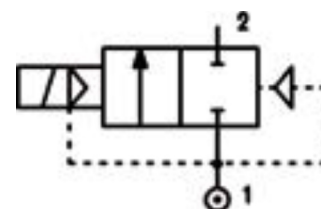
CONSTRUCTION

Body and cover	Brass
Armature tube	AISI 303
Plunger and core	AISI 430FR
Springs	AISI 302
Seal material	FPM



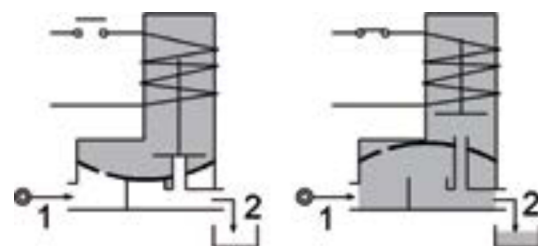
FEATURES

Maximum fluid viscosity 25cSt (mm²/s)
 Ambient temperature: from +14°F to +176°F according to the coil
 Preferred mounting position with vertical coil above
 For complete diaphragm opening, a differential pressure of at least 2.2psi (0.15bar) is necessary



4

OPTIONS: Electroless nickel plating



CODE	Port Size	Orifice Size		Flow Factor Cv	Operating Pressure Differential (M.O.P.D.) ②						Nominal power			Coil		Seal	Temp. range (°F)
					Min		Max				AC (VA)		DC (W)	Series	Width (mm)		
					(psi)	(bar)	AC	DC	Inrush	Holding							
E108CNV12///...	3/8	0.472	12	2.31	0	0	145	10	-	-	20	15	-	2	30	FPM=V	+14 +284
E108DNV12///...	1/2	0.472	12	2.54	0	0	145	10	-	-	40	30	27	5	36		
E108ENV18///...	3/4	0.709	18	5.2	0	0	130	9	-	-	40	30	-				
E108FNV25///...	1	0.984	25	9.82	0	0	101	7	-	-	-	-	27	5	36		
D108ENV18///...	3/4	0.709	18	5.2	0	0	-	-	130	9	-	-	27				
D108FNV25///...	1	0.984	25	9.82	0	0	-	-	116	8	-	-	27	5	36		

Ordination example: E108FV25///521 FPM seal, connection 1 NPT

① Coil

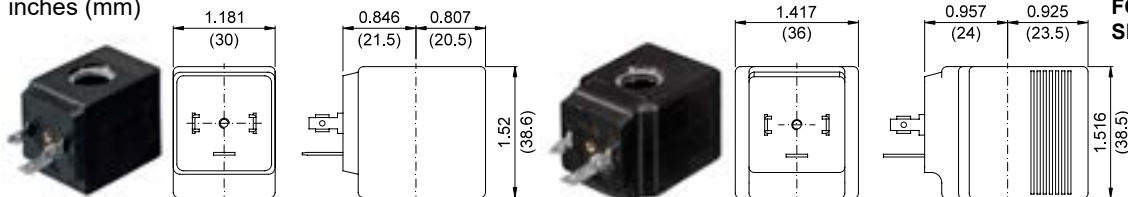
Coil 24V DC marked **CE**

② Safe Working Pressure:362 psi. Is the line or system pressure to which the valve may be subjected without being damaged.

COILS Code ①	Alternating Current 60Hz						Direct Current				Electrical connection	Connectors	DESCRIPTION Insulation class F or H Voltage tolerance ±10% Protection class: IP65 with connector attached IP00 without connector Continuous service ED100%	
	24V		120V		240V		12V		24V					
Series 2 Width 30mm	U25B c us	20B	U25D c us	20D	U25F c us	20F	-	-	-	-	DIN 43650A	PG9 code 10349000		OPTIONS Cable attached Special coil voltage Special coil powers
Series 5 Width 36mm	-	52B	-	52D	-	52F	-	520	-	521	DIN 43650A	PG11 code 10349001		

OVERALL DIMENSIONS

inches (mm)



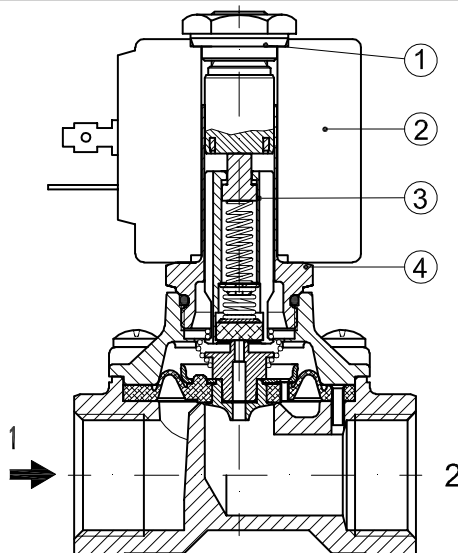
Series 2 Weight 0.26lb (0.12Kg)

Series 5 Weight 0.44lb (0.20Kg)

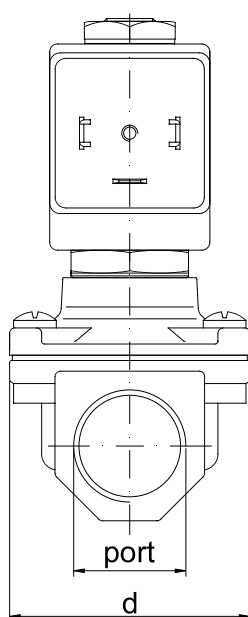
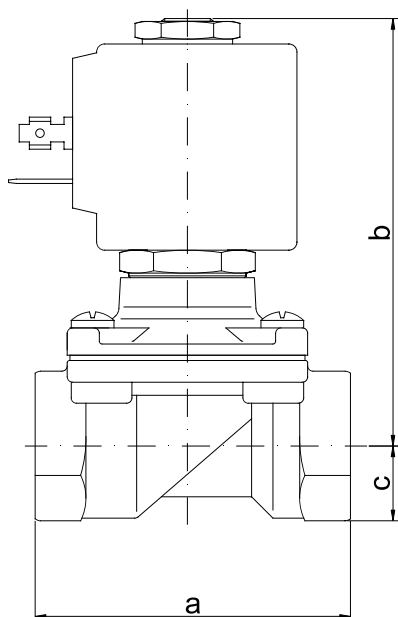
FOR COIL SPECIFICATION SEE SECTION 6

SPARE PARTS LIST

1. Coil fixing nut
2. Coil
3. Plunger
4. Armature tube with core

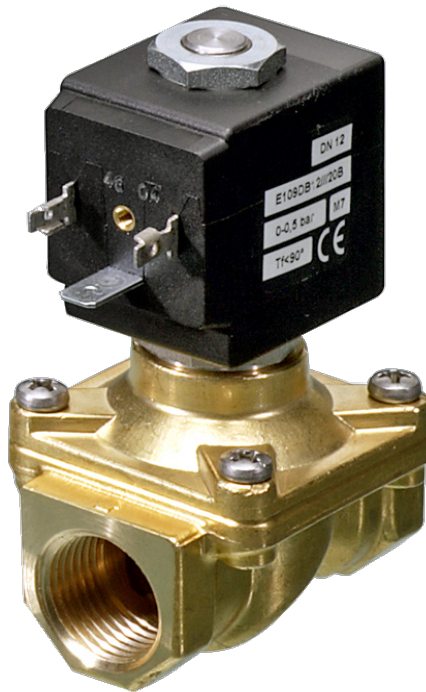


OVERALL DIMENSION



PORT SIZE	a		b		c		d		weight (coil series 2)		weight (coil series 5)	
	in	mm	in	mm	in	mm	in	mm	lb	Kg	lb	Kg
3/8	2.32	59	3.27	83	0.55	14	1.77	45	1.15	0.52	1.32	0.60
1/2	2.32	59	3.27	83	0.55	14	1.77	45	1.08	0.49	1.26	0.57
3/4	3.11	79	3.54	90	0.71	18	2.17	55	-	-	1.79	0.81
1	3.78	96	3.98	101	0.79	20	2.83	72	-	-	2.69	1.22

108 Series BSP Thread



DESCRIPTION

Solenoid valve 2 way normally closed with assisted-lift diaphragm

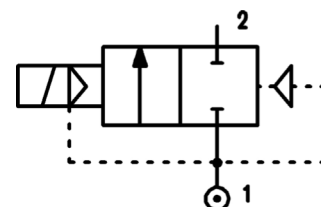
CONSTRUCTION

Body and cover	Brass
Armature tube	AISI 303
Plunger and core	AISI 430FR
Springs	AISI 302
Seal material	FPM



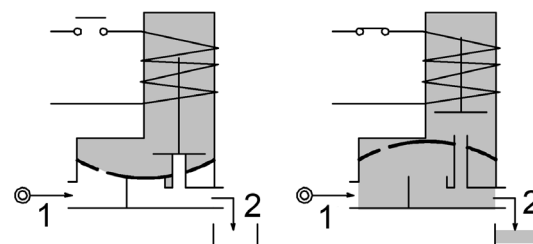
FEATURES

- Maximum allowable pressure PS 25bar^③
- Maximum fluid viscosity 25cSt (mm²/s)
- Ambient temperature: from -10°C to +80°C according to the coil
- Preferred mounting position with vertical coil above
- For complete diaphragm opening, a differential pressure of at least 0,15 bar is necessary



4

OPTIONS: Electroless nickel plating
 us certified coils




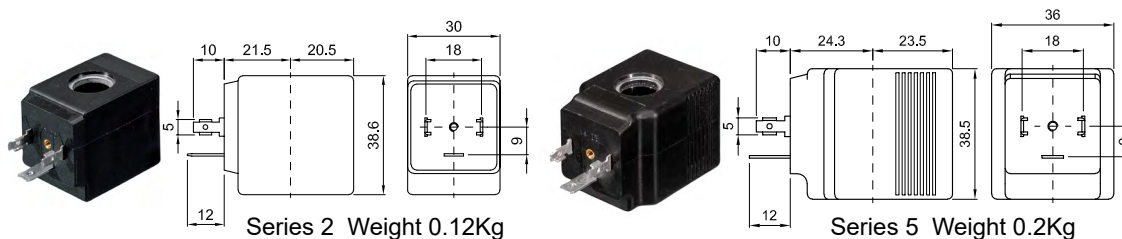
CODE ②	Connection G ISO 228	Orifice mm	Kv m ³ /h	Differential pressure bar			Nominal power			Coil		Seal	Temp. range °C
				Min	Max		AC Inrush	VA Holding	DC Watt	Series	Width		
					AC	DC							
E108CV12///...	3/8"	12	2	0	10	-	20	15	-	2	30	FPM=V	-10 +140
E108DV12///...	1/2"	12	2.2	0	10	-							
E108CV12///...	3/8"	12	2	0	12	10	40	30	27	5	36		
E108DV12///...	1/2"	12	2.2	0	12	10							
E108EV18///...	3/4"	18	4.5	0	9	-	40	30	-				
E108FV25///...	1"	25	8.5	0	7	-							
D108EV18///...	3/4"	18	4.5	0	-	9	-	-	27				
D108FV25///...	1"	25	8.5	0	-	8							

- ② Coil Example: E108FV25///52B FPM seal
Coil 24V 50/60Hz
- ③ The maximum allowable pressure PS for steam 2,5bar (gauge pressure)

COILS ②	Alternating Current 50/60Hz (V)							Direct Current (V)			Electrical connection	Connectors
	12	24	48	110	220 230	240	380	12	24	48		
Series 2 Width 30	20A	20B	20C	20D	20E	20F	20G	200	201	202	DIN 43650A	PG9 code 10349000
Series 5 Width 36	52A	52B	52C	52D	52E	52F	52G	520	521	522	DIN 43650A	PG11 code 10349001

DESCRIPTION
 Insulation class
 Series 2 =F Series 5=H
 Voltage tolerance
 AC +15% -10%
 DC ± 10%
 Protection class
 IP65 with connector fitted
 IP00 without connector

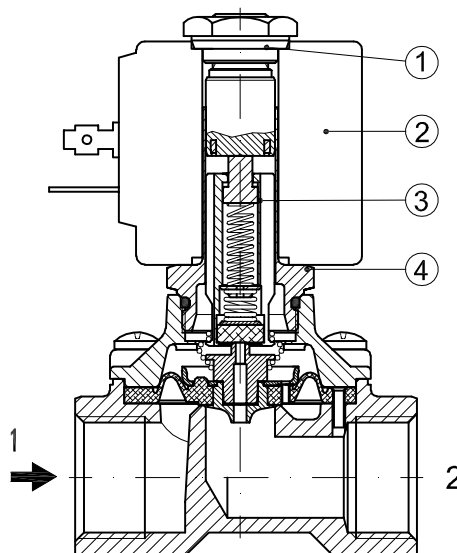
OPTIONS
 Class H insulation (series 2)
 Cable attached
 Special coil voltage
 Special coil powers
 c  US certified coils



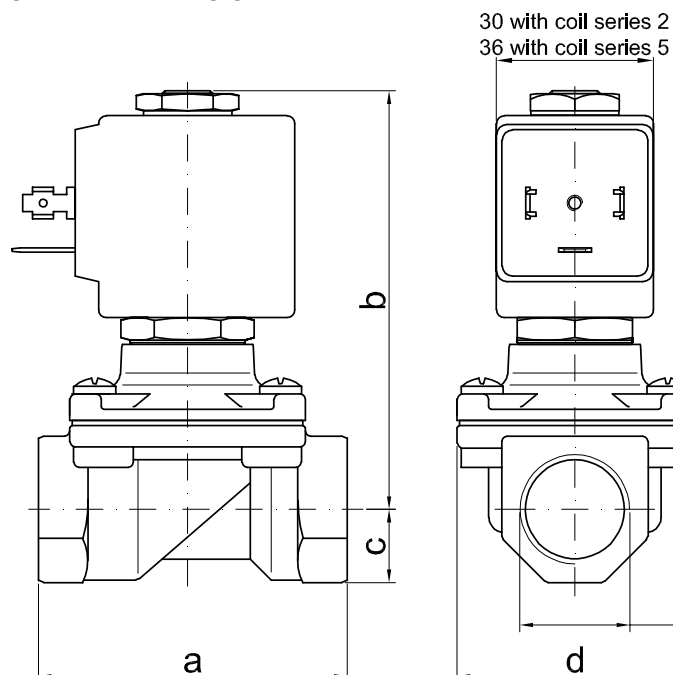
(for coil details see section 8)

SPARE PARTS LIST

1. Coil fixing nut
2. Coil
3. Plunger
4. Armature tube with core



OVERALL DIMENSION



CONNECTION	a	b	c	d	weight Kg	
					series 2	series 5
G3/8"	59	83	14	45	0.52	0.60
G1/2"	59	83	14	45	0.49	0.57
G3/4"	79	90	18	55	-	0.81
G1"	96	101	20	72	-	1.22