

110 Series Valves



800.909.4988
info@rankinusa.com

RANKIN 
COMPONENTS THAT AUTOMATE

DESCRIPTION

Solenoid valve 2 way normally closed
direct acting poppet type

CONSTRUCTION

Body	AISI 303
Armature tube	AISI 303
Plunger and core	AISI 430FR
Springs	AISI 302
Seal material	NBR - FPM - EPDM - PTFE



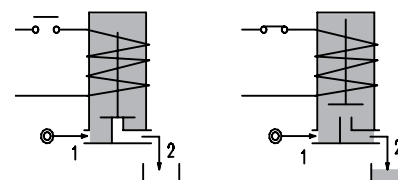
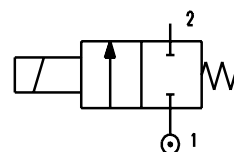
2

FEATURES

Maximum fluid viscosity 25cSt (mm²/s)
Ambient temperature: from +14°F to +176°F according to the coil
Universal mounting position

OPTIONS: Silver shading ring
Version for use with industrial oxygen

ON REQUEST: Versions for use with fluid temperature at -40°C



CODE ① ② ③	Port Size NPT	Orifice Size		Flow Factor Cv	Operating Pressure Differential (M.O.P.D.) ⑤				Nominal power			Coil		Seal ②	Temp. range (°F)
		(in)	(mm)		Min	Max		AC		DC	Series	Width (mm)			
						(psi)	(bar)	(psi)	(bar)				Inrush (VA)		
E110...N...20///...	1/4 3/8 1/2	0.079	2	0.116	0	319	22	290	20	15	10	2	30	NBR=B	+14 +194
E110...N...25///...		0.098	2.5	0.173	0	232	16	203							
E110...N...35///...		0.138	3.5	0.370	0	145	10	108							
E110...N...45///...		0.177	4.5	0.474	0	79	5.5	43.5							
E110...N...52///...		0.205	5.2	0.543	0	50	3.5	29							
E110...N...64///...		0.252	6.4	0.740	0	29	2	14.5							
E110...N...20///...	1/4 3/8 1/2	0.079	2	0.116	0	435	30	362	27	20	14	5	36	EPDM=E	+14 +284
E110...N...25///...		0.098	2.5	0.173	0	362	25	290							
E110...N...35///...		0.138	3.5	0.370	0	261	18	217							
E110...N...45///...		0.177	4.5	0.474	0	152	10.5	79							
E110...N...52///...		0.205	5.2	0.543	0	108	7.5	58							
E110...N...64///...		0.252	6.4	0.740	0	58	4	29							
E110...N...20///...	1/4 3/8 1/2	0.079	2	0.116	0	725	50	580	40	30	27	5	36	PTFE=W ④	+14 +356
E110...N...25///...		0.098	2.5	0.173	0	507	35	478							
E110...N...35///...		0.138	3.5	0.370	0	290	20	275							
E110...N...45///...		0.177	4.5	0.474	0	203	14	188							
E110...N...52///...		0.205	5.2	0.543	0	145	10	130							
E110...N...64///...		0.252	6.4	0.740	0	72.5	5	65							

① Port size: B=1/4 C=3/8 D=1/2

② Seal Ordination example: E110BNV20///U25B FPM seal, connection 1/4 NPT

③ Coil Coil 24V 60Hz certified and marked

④ For PTFE seals the maximum allowable leakage is 0,0008gpm

⑤ Safe Working Pressure:1450 psi. Is the line or system pressure to which the valve may be subjected without being damaged.
The maximum allowable pressure PS for steam is 87 psi with PTFE seals and 36 psi with EPDM seals.

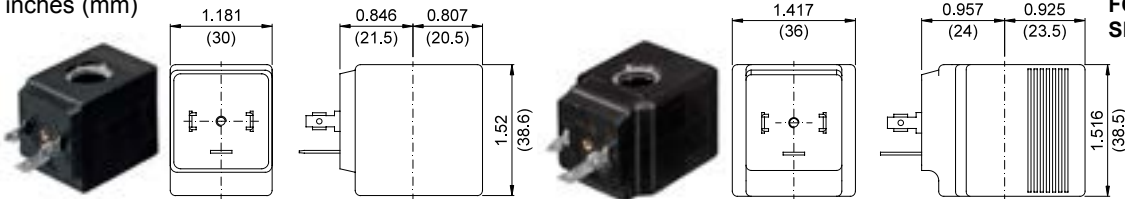
Series 110

COILS Code ③	Alternating Current						Direct Current				Electrical connection	Connectors	DESCRIPTION Insulation class F or H Voltage tolerance ±10% Protection class: IP65 with connector attached IP00 without connector Continuous service ED100%
	24V		120V		240V		12V		24V				
Series 2 Width 30mm	U25B c us	201	U25D c us	20D	U25F c us	20F	U250 c us	200	U251 c us	201	DIN 43650A	PG9 code 10349000	
Series 5 Width 36mm	U55B c us	521	U55D c us	52D	U55F c us	52F	U550 c us	520	U551 c us	521	DIN 43650A	PG11 code 10349001	

OPTIONS
Cable attached
Special coil voltage
Special coil powers

OVERALL DIMENSIONS

inches (mm)



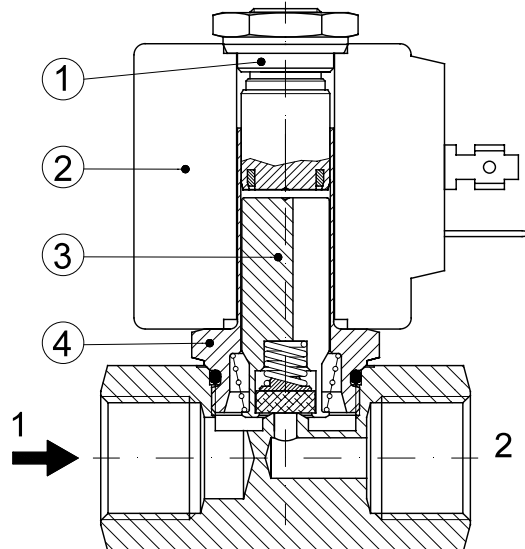
Series 2 Weight 0.26lb (0.12Kg)

Series 5 Weight 0.44lb (0.20Kg)

FOR COIL SPECIFICATION SEE SECTION 6

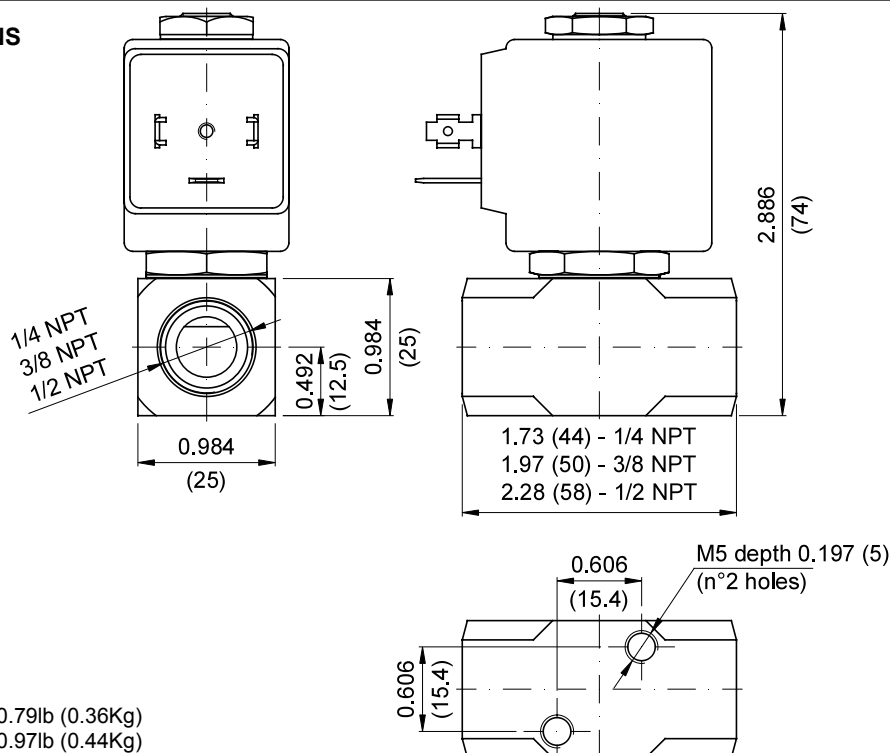
SPARE PARTS LIST

1. Coil fixing nut
2. Coil
3. Plunger assembly
4. Armature tube assembly



OVERALL DIMENSIONS

inches (mm)



Weight with coil series 2=0.79lb (0.36Kg)
Weight with coil series 5=0.97lb (0.44Kg)