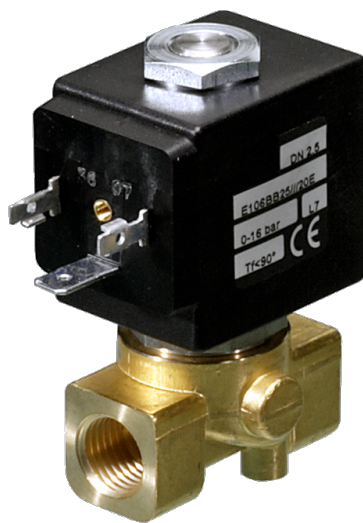


# 116 Series Valves



800.909.4988  
info@rankinusa.com

**RANKIN**   
COMPONENTS THAT AUTOMATE

## DESCRIPTION

Solenoid valve 2 way direct acting poppet type.

Bi-stable impulse drive.

The bi-stable function is achieved by the use of a polarized permanent magnet energizing the coil with a DC current for at least 15ms in the reverse direction of the preceding impulse.

## CONSTRUCTION

Body	Brass
Armature tube	AISI 303
Plunger and core	AISI 430FR
Magnet	NeFeB
Springs	AISI 302
Seal material	NBR - FPM - EPDM

## FEATURES

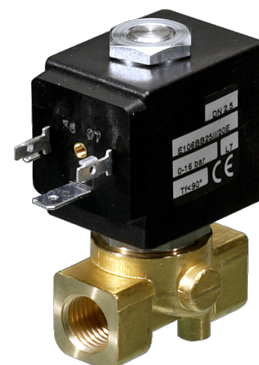
Maximum allowable pressure PS 50bar

Maximum fluid viscosity 25cSt (mm<sup>2</sup>/s)

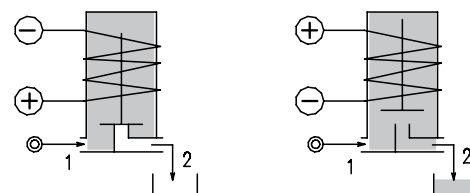
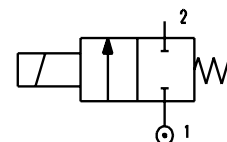
Ambient temperature: from -10°C to +80°C according to the coil

Universal mounting position

**OPTIONS:** Electroless nickel plating  
Stainless steel seat insert (up to Ø4.5)



2



CODE ① ② ③	Connection G ISO 228	Orifice mm	Kv m <sup>3</sup> /h	Differential pressure bar		Nominal power DC Watt	Coil		Seal ①	Temp. range °C	
				Min	Max		Series	Width			
D116... ..10///...	1/8"	1	0.04	0	80	10	2	30	NBR=B EPDM=E FPM=V	-10 +90 -10 +120 -10 +120	
D116... ..12///...		1.2	0.05	0	60						
D116... ..15///...		1.5	0.07	0	26						
D116... ..20///...		1/4"	2	0.1	0						20
D116... ..25///...			2.5	0.15	0						14
D116... ..30///...		3/8"	3	0.25	0						10
D116... ..35///...			3.5	0.32	0						8
D116... ..40///...		1/2"	4	0.36	0						5
D116... ..45///...			4.5	0.41	0						3.5
D116... ..52///...	5.2		0.47	0	1.8						

① Connection: A=1/8", B=1/4", C=3/8", D=1/2"

② Seal

Example: D116BB25///201 NBR seal

③ Coil

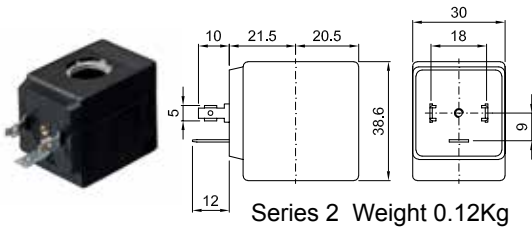
Coil 24V DC 10W

COILS ③	Direct Current (V)			Electrical connection	Connectors
	12	24	48		
Series 2 Width 30	200	201	202	DIN 43650A	PG9 code 10349000

**DESCRIPTION**  
 Insulation class F  
 Voltage tolerance  $\pm 10\%$   
 Protection class  
 IP65 with connector fitted  
 IP00 without connector

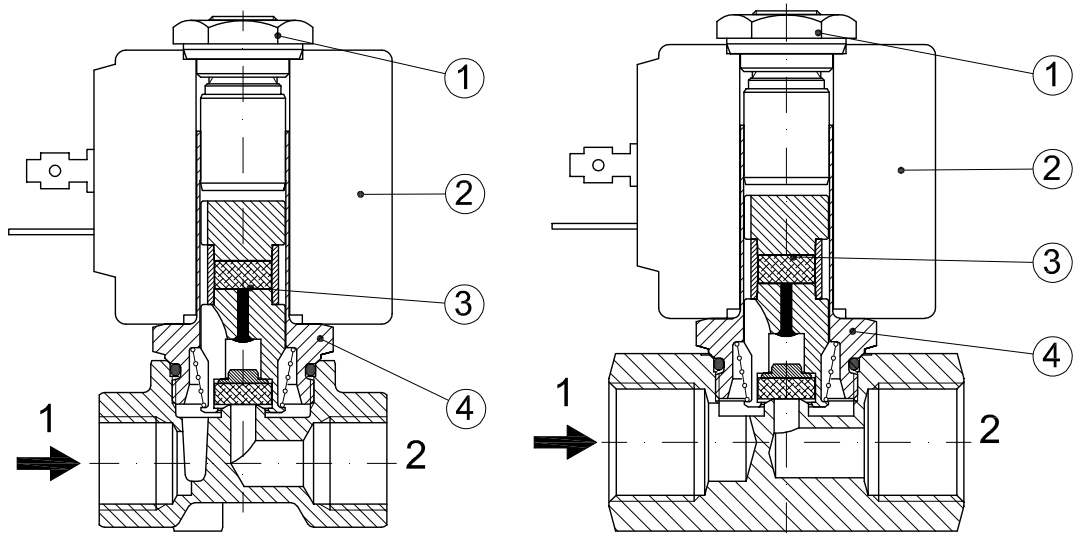
**OPTIONS**  
 Class H insulation  
 Cable attached  
 Special coil voltage  
 Special coil powers

(for coil details see section 8)



### SPARE PARTS LIST

1. Coil fixing nut
2. Coil
3. Plunger
4. Armature tube assembly



### OVERALL DIMENSION

