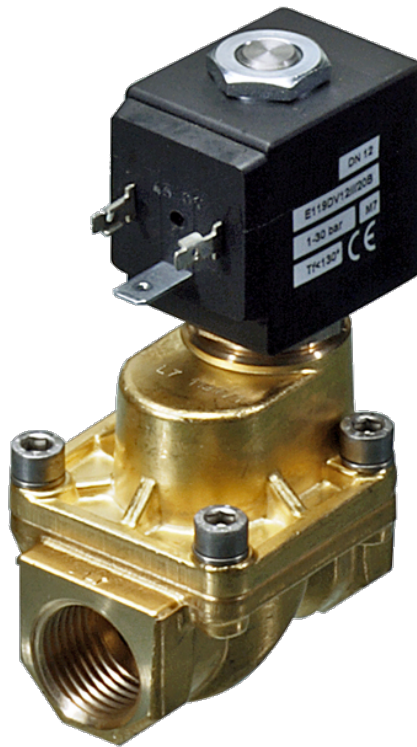


119W Series Valves



800.909.4988
info@rankinusa.com

RANKIN 
COMPONENTS THAT AUTOMATE

DESCRIPTION

Solenoid valve 2 way normally closed with servo-assisted piston for use with steam

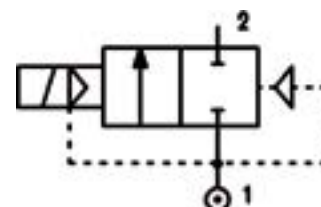
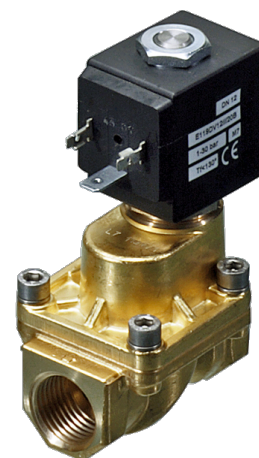
CONSTRUCTION

Body and cover	Brass
Armature tube	AISI 303
Plunger and core	AISI 430FR
Springs	AISI 302
Piston	AISI 303
Piston seal	PTFE reinforced
Seal material	PTFE

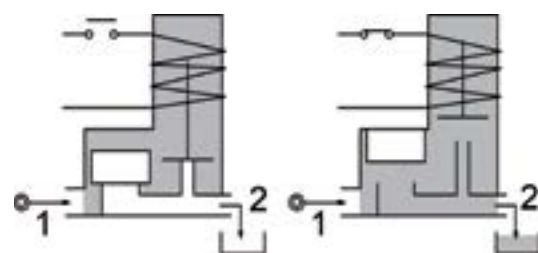
FEATURES

Minimum differential pressure 36psi
 Ambient temperature: from +14°F to +176°F according to the coil
 Preferred mounting position with vertical coil above

OPTIONS: Electroless nickel plating



4



CODE	Port Size	Orifice Size		Flow Factor Cv	Operating Pressure Differential (M.O.P.D.)						Nominal power			Coil		Seal	Temp. range (°F)
					Min		Max				AC (VA)		DC (W)	Series	Width (mm)		
					(psi)	(bar)	AC (psi)	AC (bar)	DC (psi)	DC (bar)	Inrush	Holding					
E119CNW12/1/...	3/8	0.472	12	2.31	36	2.5	145	10	145	10	20	15	10	2	30	PTFE	+14 +356
E119DNW12/1/...	1/2	0.472	12	2.54	36	2.5	145	10	145	10							

Ordination example: E119DNW12///U25B PTFE seal, connection 1/2 NPT

Coil 24V 60Hz certified c us and marked CE

① Coil

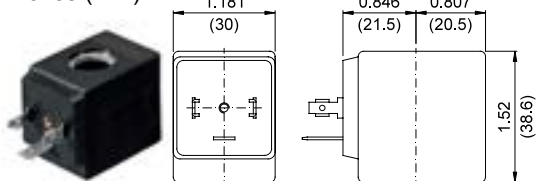
Series 119W

COILS Code ①	Alternating Current			Direct Current		Electrical connection	Connectors
	24V	120V	240V	12V	24V		
Series 2 Width 30mm	U25B C US	U25D C US	U25F C US	U250 C US	U251 C US	DIN 43650A	PG9 code 10349000

DESCRIPTION
 Insulation class H
 Voltage tolerance ±10%
 Protection class:
 IP65 with connector attached
 IP00 without connector
 Continuous service ED100%

OVERALL DIMENSIONS

inches (mm)



Series 2 Weight 0.26lb (0.12Kg)

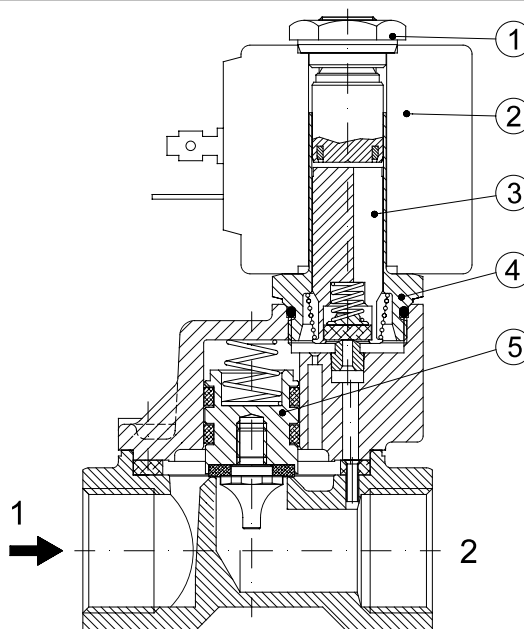
OPTIONS

Cable attached
 Special coil voltage
 Special coil powers

FOR COIL SPECIFICATION SEE SECTION 6

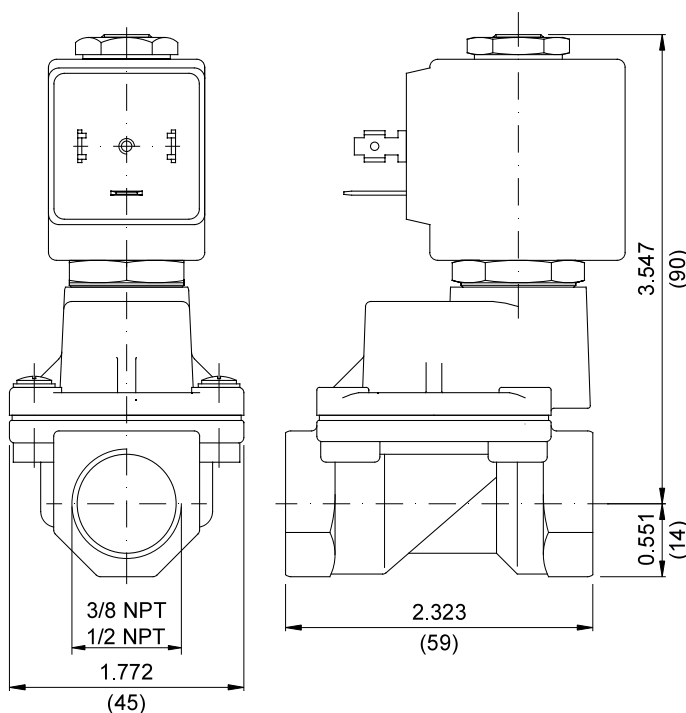
SPARE PARTS LIST

1. Coil fixing nut
2. Coil
3. Plunger assembly
4. Armature tube assembly
5. Piston assembly



OVERALL DIMENSIONS

inches (mm)



Weight 1.39lb (0.63Kg)