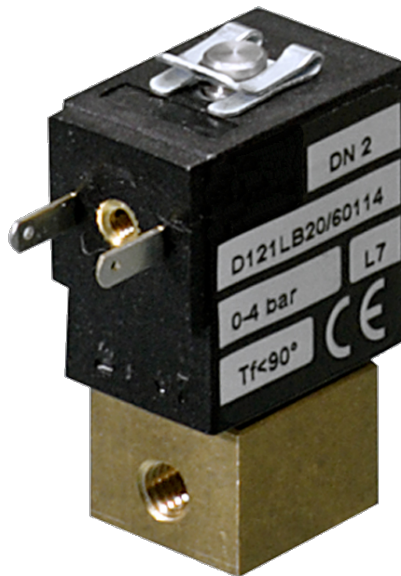


# 121 Series Valves



800.909.4988  
info@rankinusa.com

**RANKIN**   
COMPONENTS THAT AUTOMATE

## DESCRIPTION

Solenoid valve 2 way normally closed  
direct acting poppet type

## CONSTRUCTION

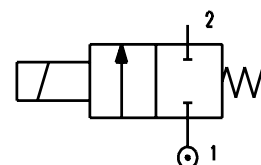
Body	Brass
Armature tube	Brass
Plunger and core	AISI 430FR
Springs	AISI 302
Seal material	NBR - FPM



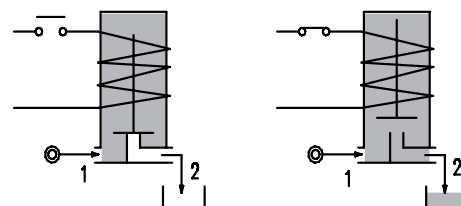
**2**

## FEATURES

Maximum allowable pressure PS 30bar<sup>③</sup>  
Maximum fluid viscosity 25cSt (mm<sup>2</sup>/s)  
Ambient temperature: from -10°C to +55°C  
Universal mounting position



**OPTIONS:** Electroless nickel plating



CODE ① ②	Connection	Orifice mm	Kv m <sup>3</sup> /h	Differential pressure bar			Nominal power			Coil		Seal ①	Temp. range °C
				Min	Max		AC	VA	DC	Series	Width		
					AC	DC	Inrush	Holding	Watt				
D121L...10///...	M5	1	0.03	0	-	10	-	-	2	6	16	NBR=B	-10 +90
D121L...12///...		1.2	0.037	0	-	7	-	-	2				
D121L...12///...		1.2	0.037	0	-	12	-	-	4				
D121L...16///...		1.6	0.055	0	-	3	-	-	2				
D121L...16///...		1.6	0.055	0	-	8	-	-	4				
D121L...20///...		2	0.082	0	-	1.4	-	-	2				
D121L...20///...		2	0.082	0	-	4	-	-	4				

① Seal

Example: D121LB12///60112 NBR seal

② Coil

Coil 24V DC 2W

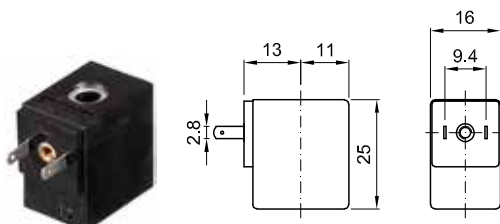
③ The maximum allowable pressure PS for steam is 2.5bar (gauge pressure)

COILS ③	Direct Current				Electrical connection	Connectors
	12V		24V			
	2W	4W	2W	4W		
Series 6 Width 16	60012	60014	60112	60114	AMP 2.8x0.5	PG7 code 10348040

**DESCRIPTION**  
 Class F insulation  
 Voltage tolerance  $\pm 5\%$   
 Protection class  
 IP65 with connector fitted  
 IP00 without connector  
 Continuous service ED100%

**OPTIONS**  
 Cable attached  
 Special coil voltage  
 Special coil powers

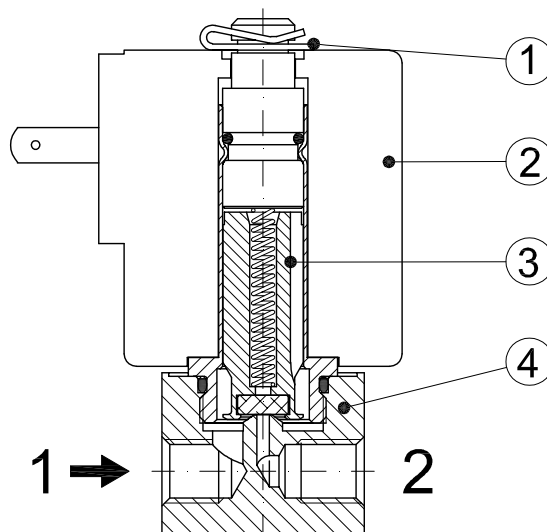
(for coil details see section 8)



Series 6 Weight 0.02Kg

### SPARE PARTS LIST

1. Coil fixing nut
2. Coil
3. Plunger
4. Armature tube assembly



### OVERALL DIMENSION

