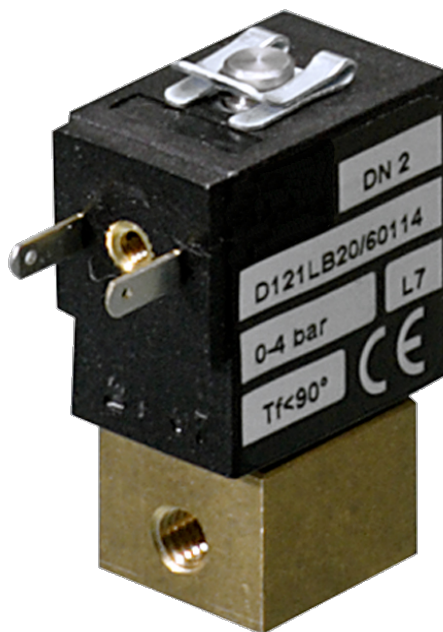


121 Series Valves



800.909.4988
info@rankinusa.com

RANKIN 
COMPONENTS THAT AUTOMATE

DESCRIPTION

Solenoid valve 2 way normally closed
direct acting poppet type

CONSTRUCTION

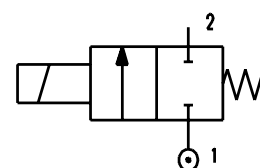
Body	Brass
Armature tube	Brass
Plunger and core	AISI 430FR
Springs	AISI 302
Seal material	NBR - FPM - EPDM



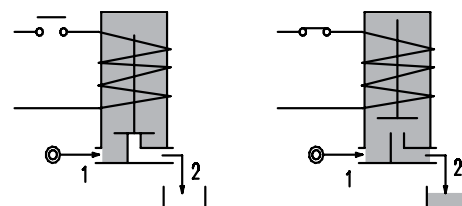
2

FEATURES

Maximum fluid viscosity 25cSt (mm²/s)
Ambient temperature +14°F +131°F (class F coil)
Universal mounting position



OPTIONS: Electroless nickel plating
Version for use with industrial oxygen



CODE ① ②	Port Size	Orifice Size		Flow Factor Cv	Operating Pressure Differential (M.O.P.D.) ③				Nominal power			Coil		Seal ①	Temp. range (°F)	
		(in)	(mm)		Min	Max		AC (VA)		DC (W)	Series	Width (mm)				
						(psi)	(bar)	(psi)	(bar)				Inrush			Holding
D121L...10///...	M5	0.039	1	0.035	0	-	-	145	10	-	-	2	6	16	NBR=B	+14 +194
D121L...12///...		0.047	1.2	0.043	0	-	-	101	7	-	-	2				
D121L...16///...		0.063	1.6	0.064	0	-	-	43	3	-	-	2				
D121L...20///...		0.079	2	0.095	0	-	-	20	1.4	-	-	2				
D121L...12///...	M5	0.047	1.2	0.043	0	-	-	174	12	-	-	4			EPDM=E	+14 +284
D121L...16///...		0.063	1.6	0.064	0	-	-	116	8	-	-	4				
D121L...20///...		0.079	2	0.095	0	-	-	58	4	-	-	4				

① Seal

Ordination example: D121LB16///60114 NBR seal

② Coil

Coil 24V DC 4W marked **CE**

③ Safe Working Pressure: 435 psi. Is the line or system pressure to which the valve may be subjected without being damaged.

COILS Code ②	Direct Current				Electrical connection	Connectors
	12V		24V			
	2W	4W	2W	4W		
Series 2 Width 16mm	60012	60014	60112	60114	AMP 2.8x0.5	PG7 code 10348040

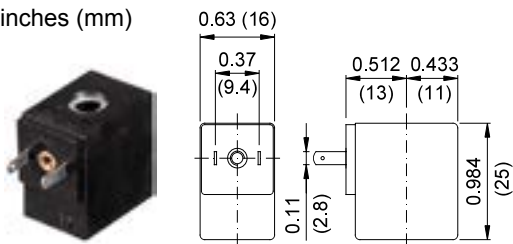
DESCRIPTION
 Class F insulation
 Voltage tolerance $\pm 5\%$
 Protection class
 IP65 with connector attached
 IP00 without connector
 Continuous service ED100%

OPTIONS
 Cable attached
 Special coil voltage
 Special coil powers

FOR COIL SPECIFICATION SEE SECTION 6

OVERALL DIMENSIONS

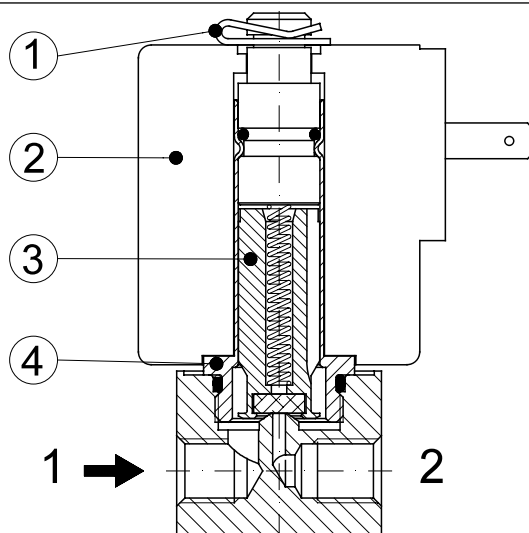
inches (mm)



Series 6 Weight 0.044lb (0.02Kg)

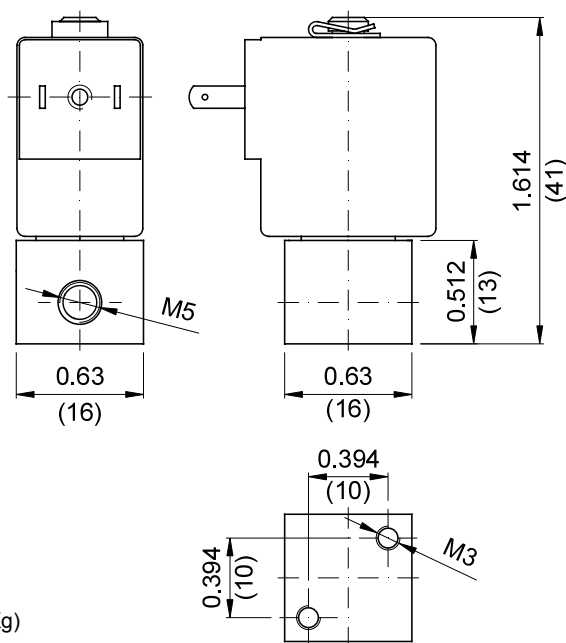
SPARE PARTS LIST

1. Clip
2. Coil
3. Plunger assembly
4. Armature tube assembly



OVERALL DIMENSIONS

inches (mm)



Weight = 0.11lb (0.05Kg)