

130 Series Valves



800.909.4988
info@rankinusa.com

RANKIN 
COMPONENTS THAT AUTOMATE

DESCRIPTION


Solenoid valve in line normally closed direct acting poppet type.

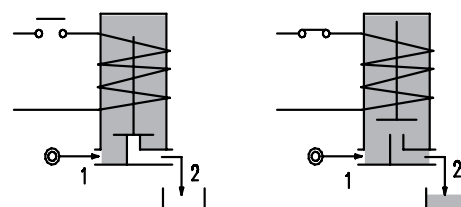
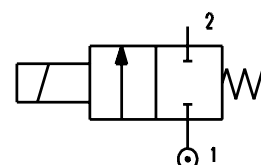
CONSTRUCTION

Body/Armature tube	AISI 303
Plunger and core	AISI 430FR
Springs	AISI 302
Seal material	NBR - FPM - EPDM

FEATURES




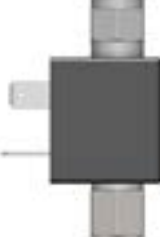
Maximum fluid viscosity 25cSt (mm²/s)
 Ambient temperature: from +14°F to +176°F according to the coil
 Universal mounting position

OPTIONS: Mounting bracket
 Version for use with industrial oxygen
 Special coil powers
 c  us certified coils



2

CONFIGURATIONS

G1/8"MALE - Push-on for pipes Ø6x4mm (Ø1/4) NW	G1/8"MALE - G1/8"FEMALE NA	G1/8"FEMALE - Push-on for pipes Ø6x4mm (Ø1/4) AW	G1/8"FEMALE - G1/8"FEMALE AA
			

CODE ① ② ③	Orifice size		Flow Factor Cv (gpm)	Operating Pressure Differential (M.O.P.D.)				Electrical data		Coil		Seal ②	Temperature range (°F)	
	(in)	(mm)		Min	Max		Voltage (V)	Power	Series	Width (mm)				
					AC (psi) (bar)	DC (psi) (bar)								
D130.....10/...	0.04	1	0.035	0	-	-	120	8.5	12-24V DC	2 W	3	22	NBR=B	+14 +194
D130.....12/...	0.05	1.2	0.046	0	-	-	87	6						
D130.....15/...	0.06	1.5	0.07	0	-	-	58	4						
E130.....10/...	0.04	1	0.035	0	725	50	-	-	230V 50/60Hz	3.5 VA	3	22	FPM=V	+14 +284
E130.....12/...	0.05	1.2	0.046	0	580	40	-	-						
E130.....15/...	0.06	1.5	0.07	0	360	25	-	-						
E130.....10/...	0.04	1	0.035	0	725	50	725	50	All standard voltages	6.5W or 8VA	3	22	EPDM=E	+14 +284
E130.....12/...	0.05	1.2	0.046	0	725	50	725	50						
E130.....15/...	0.06	1.5	0.07	0	725	50	725	50						

- ① Configurations Example: E130NWB10///U351 - G1/8" male - Push-on connections
 ② Seal NBR seals - 24V DC 6.5W UL
 ③ Coil

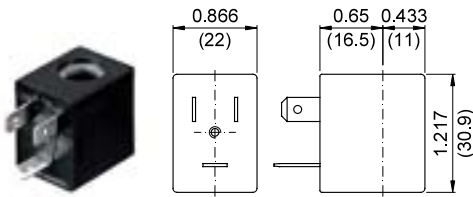
COILS Code ③	Alternating Current (V)							Direct Current (V)			Electrical connection	Connectors
	12	24	48	110	220 230	240	380	12	24	48		
Series 3 Width 22 6.5W or 8VA	30A	30B U35B 	30C	30D U35D 	30E	30F U35F 	30G	300 U350 	301 U351 	302	DIN 46244	PG9 CODE 10348000

DESCRIPTION
 Class F insulation
 Voltage tolerance
 AC +15% -10%
 DC ± 10%
 Protection class
 IP65 with connector fitted
 IP00 without connector
 Continuous service ED100%

COILS Code ③	Alternating Current (V)	Direct Current (V)		Electrical connection	Connectors
	220-230	12	24		
Series 3 Width 22 2W or 3.5VA	30E1P	300120	301120	DIN 46244	PG9 CODE 10348000

OPTIONS
 Class H insulation
 Cable attached
 Special coil voltage
 Special coil powers

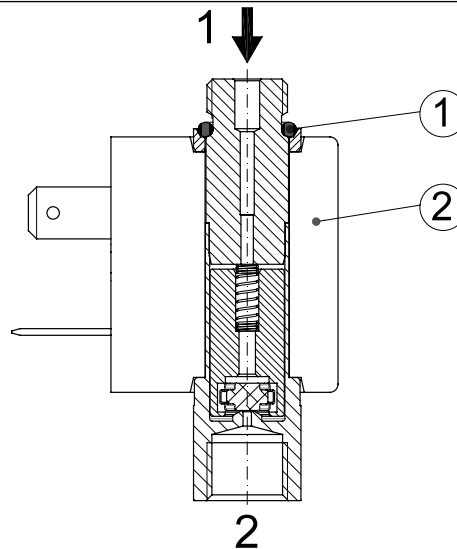
**FOR COIL SPECIFICATION
 SEE SECTION 6**



Series 3 Weight 0.11lb (0.05Kg)

SPARE PARTS LIST

- OR
- Coil



OVERALL DIMENSIONS

inches (mm)

