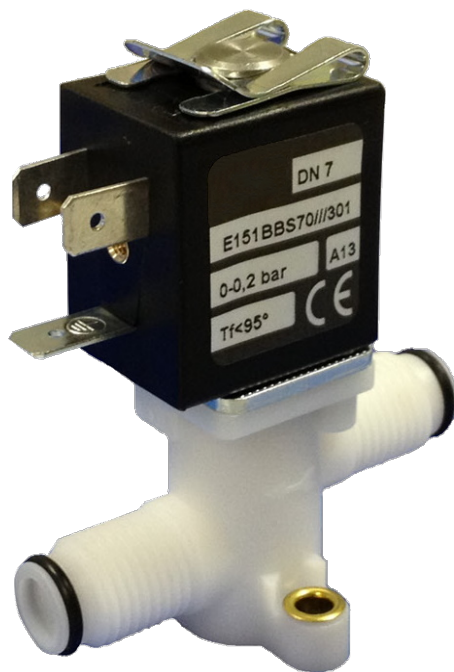


151 Series Valves



800.909.4988
info@rankinusa.com

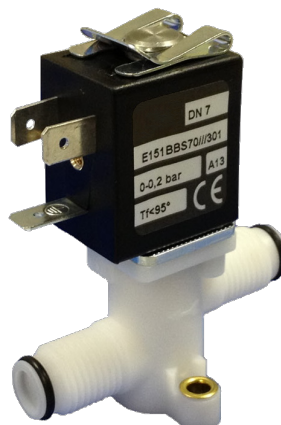
RANKIN 
COMPONENTS THAT AUTOMATE

DESCRIPTION

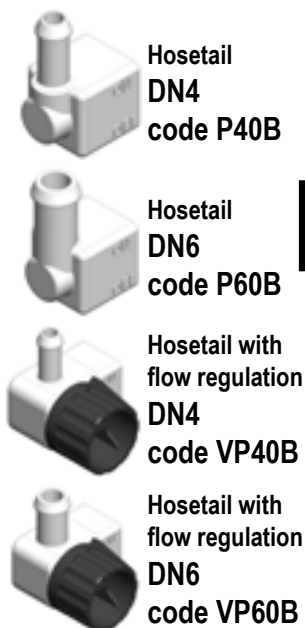
Solenoid valve 2 way normally closed
direct acting with dry armature.
No metal parts in contact with the media.

CONSTRUCTION

Body	Acetal copolymer
Armature tube	Brass
Plunger and core	AISI 430FR
Springs	AISI 302
Seal material	SILICONE



Connection accessories
for further details see section 9

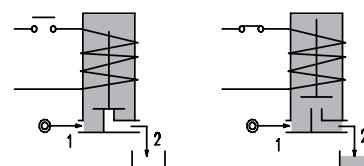
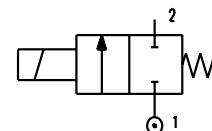


2

FEATURES

Maximum allowable pressure PS 2bar
Maximum fluid viscosity 25cSt (mm²/s)
Ambient temperature: from -10°C to +80°C according to the coil
Preferred mounting position with vertical coil above

OPTIONS: Nickel plated armature tube
For connection accessories see section 9
c us certified coils



CONNECTION				
E151BBS70	E151PPS60	E151PPS40	E151BPS60	E151BPS40
G1/4"	Hosetail DN6	Hosetail DN4	G1/4"-Hosetail DN6	G1/4"-Hosetail DN4

OTHER CONFIGURATION AVAILABLE ON REQUEST

CODE ②	Connection	Orifice mm	Kv m ³ /h	Differential pressure bar		Nominal power			Coil		Seal ①	Temp. range °C	
				Min	Max	AC Inrush	VA Holding	DC Watt	Series	Width			
E151BBS70///...	G1/4"	7	0.83	0	0.6	0.3	12	8	6.5	3	22	SILICONE=S	<+95°C
E151PPS60///...	Hosetail DN6	6	0.63	0	0.6	0.3							
E151PPS40///...	Hosetail DN4	4	0.34	0	0.6	0.3							
E151BPS60///...	G1/4"-Hosetail DN6	6	0.63	0	0.6	0.3							
E151BPS40///...	G1/4"-Hosetail DN4	4	0.34	0	0.6	0.3							

② Coil


Example: E151BPS60///30B G1/4" inlet, hosetail DN6 outlet
Coil 24V 50/60Hz

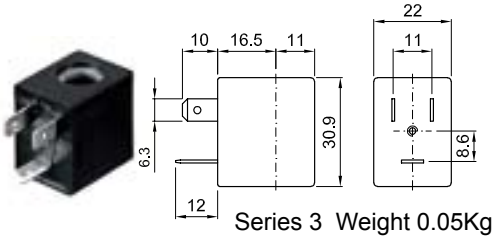
FOR HIGHER DIFFERENTIAL PRESSURE CONTACT THE MANUFACTURER

Series 151

COILS ②	Alternating Current 50/60Hz (V)							Direct Current (V)			Electrical connection	Connectors
	12	24	48	110	220 230	240	380	12	24	48		
Series 3 Width 22	30A	30B	30C	30D	30E	30F	30G	300	301	302	DIN 46244	PG9 code 10348000

DESCRIPTION
 Class F insulation
 Voltage tolerance
 AC +15% -10%
 DC ± 10%
 Protection class
 IP65 with connector fitted
 IP00 without connector
 Continuous service ED100%

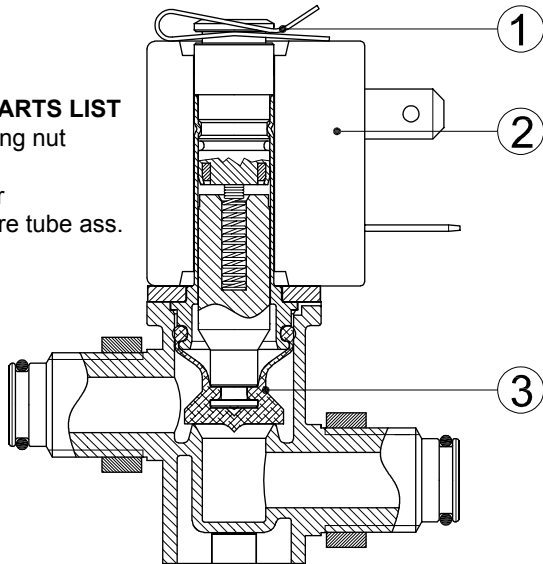
OPTIONS
 Class H insulation
 Cable attached
 Special coil voltage
 Special coil powers
 US certified coils



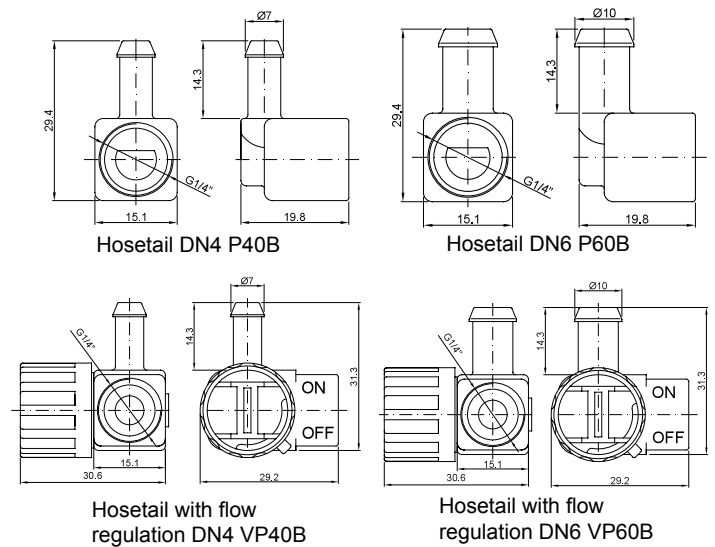
(for coil details see section 8)

SPARE PARTS LIST

1. Coil fixing nut
2. Coil
3. Plunger
4. Armature tube ass.



CONNECTION ACCESSORIES DIMENSIONS



OVERALL DIMENSION

