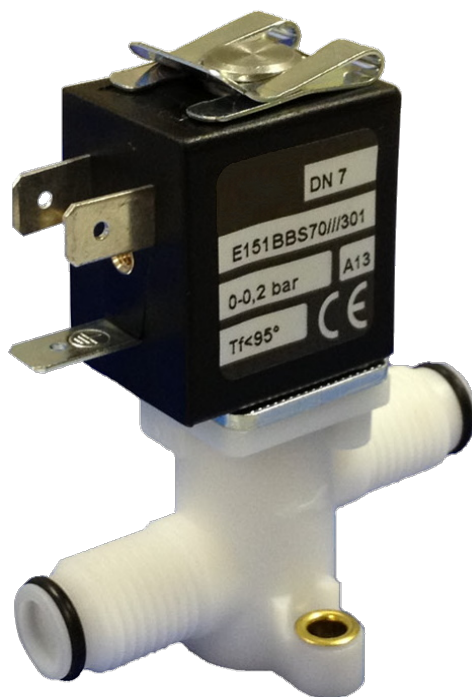


151 Series Valves



800.909.4988
info@rankinusa.com

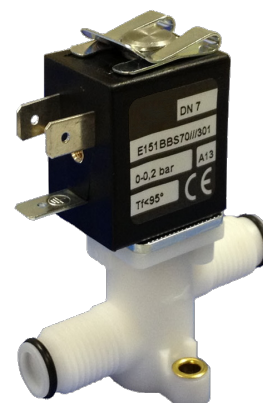
RANKIN 
COMPONENTS THAT AUTOMATE

DESCRIPTION

Solenoid valve 2 way normally closed
direct acting with dry armature.
No metal parts in contact with the media.

CONSTRUCTION

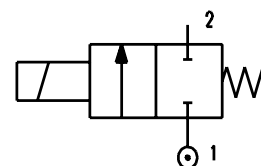
Body	Acetal copolymer
Armature tube	Brass
Plunger and core	AISI 430FR
Springs	AISI 302
Seal material	SILICONE



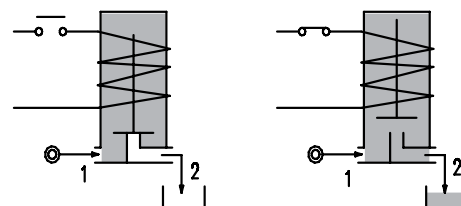
2

FEATURES

Ambient temperature: from +14°F to +176°F according to the coil
Preferred mounting position with vertical coil above



OPTIONS: Nickel plated armature tube
For connection accessories see section 7



PORT TYPES	
E151PPS60	E151PPS40
Hosetail DN6 (0.236)	Hosetail DN4 (0.157)

OTHER CONFIGURATION AVAILABLE ON REQUEST

CODE	Port type	Orifice Size		Flow Factor Cv	Operating Pressure Differential (M.O.P.D.) ③				Nominal power			Coil		Seal	Temp. range (°F)	
					Min	Max		AC (VA)	DC (W)	Series	Width (mm)					
						AC (psi)	AC (bar)					DC (psi)	DC (bar)			Inrush
E151PPS40///...	HOSETAIL DN4	0.157	4	0.393	0	8.7	0.6	4.4	0.3	12	8	6.5	3	22	SILICONE=S	<+200
E151PPS60///...	HOSETAIL DN6	0.236	6	0.728	0	8.7	0.6	4.4	0.3							

② Coil Ordination example: E151PPS60///U351 hosetail DN6 connections
Coil 24V DC certified us and marked

③ Safe Working Pressure: 29 psi. Is the line or system pressure to which the valve may be subjected without being damaged.

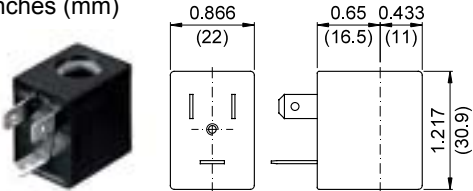
FOR HIGHER DIFFERENTIAL PRESSURE CONTACT THE MANUFACTURER

COILS Code ②	Alternating Current						Direct Current				Electrical connection	Connectors
	24V		120V		240V		12V		24V			
Series 3 Width 22mm	U35B	30B	U35D	30D	U35F	30F	U350	300	U351	301	DIN 46244	PG9 code 10348000

DESCRIPTION
 Class F or H insulation
 Voltage tolerance ±10%
 Protection class:
 IP65 with connector attached
 IP00 without connector
 Continuous service ED100%

OVERALL DIMENSIONS

inches (mm)



Series 3 Weight 0.11lb (0.05Kg)

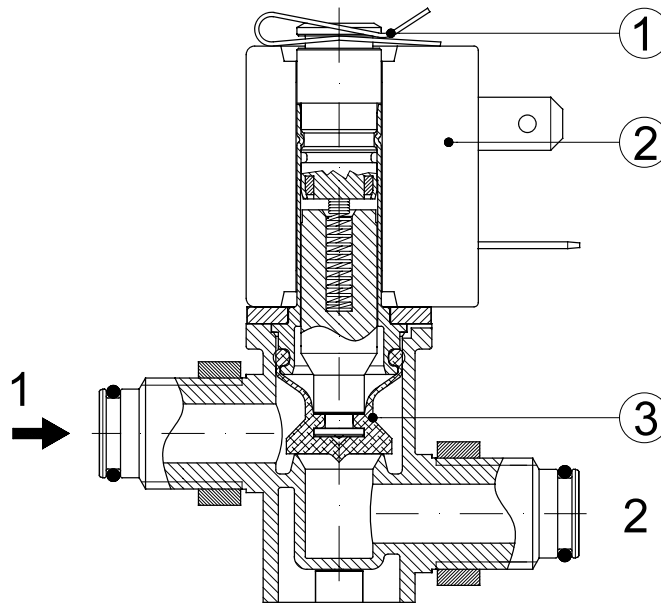
OPTIONS

Cable attached
 Special coil voltage
 Special coil powers

FOR COIL SPECIFICATION SEE SECTION 6

SPARE PARTS LIST

1. Coil fixing nut
2. Coil
3. Plunger assembly
4. Armature tube assembly



OVERALL DIMENSIONS

inches (mm)

