

160 Series Valves



800.909.4988
info@rankinusa.com

RANKIN 
COMPONENTS THAT AUTOMATE

DESCRIPTION

Solenoid valve 2 way normally closed
 direct acting with dry armature.
 No metal parts in contact with the media.

CONSTRUCTION

| | |
|------------------|------------------|
| Body | Acetal copolymer |
| Armature tube | AISI 303 |
| Plunger and core | AISI 430FR |
| Springs | AISI 302 |
| Seal material | SILICONE - FPM |

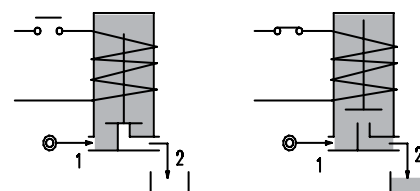
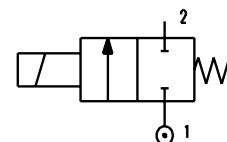


2

FEATURES

Maximum allowable pressure PS 1.5bar
 Maximum fluid viscosity 25cSt (mm²/s)
 Ambient temperature: from -10°C to +80°C according to the coil
 Mounting position with vertical coil above

OPTIONS:  US certified coils



| CODE ① ② | Connection G ISO 228 | Orifice mm | Kv m ³ /h | Differential pressure bar | | Nominal power | | | Coil | | Seal ① | Temp. range °C | |
|---------------------------------|----------------------------|---------------|-------------------------|------------------------------|--------|---------------|---------------|------------|--------|-------|-----------|----------------------|--------|
| | | | | Inlet | Outlet | AC Inrush | VA Holding | DC Watt | Series | Width | | | |
| Version with closed vent | | | | | | | | | | | | SILICONE=S FPM=V | <+95°C |
| E160S...10/1/... | 1/2" | 10 | 1.7 | 0.5 | 0.1 | 20 | 15 | 10 | 2 | 30 | | | |
| Version with open vent | | | | | | | | | | | | SILICONE=S FPM=V | <+95°C |
| E160S...10///... | 1/2" | 10 | 1.7 | 0.5 | 0.1 | 20 | 15 | 10 | 2 | 30 | | | |

- ① Seal
- ② Coil

Example: E160SS10/1/20E Closed vent - Coil 230V 50/60Hz

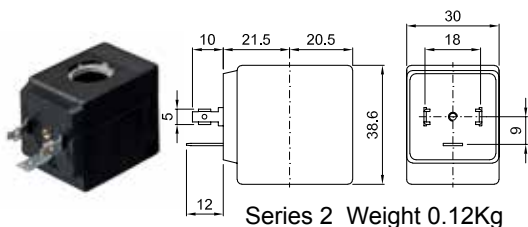
Series 160

| COILS ② | Alternating Current 50/60Hz (V) | | | | | | | Direct Current (V) | | | Electrical connection | Connectors |
|----------------------|------------------------------------|-----|-----|-----|------------|-----|-----|-----------------------|-----|-----|--------------------------|-------------------------|
| | 12 | 24 | 48 | 110 | 220 230 | 240 | 380 | 12 | 24 | 48 | | |
| Series 2 Width 30 | 20A | 20B | 20C | 20D | 20E | 20F | 20G | 200 | 201 | 202 | DIN 43650A | PG9 code 10349000 |

DESCRIPTION
 Class F insulation
 Voltage tolerance
 AC +15% -10%
 DC ± 10%
 Protection class
 IP65 with connector fitted
 IP00 without connector

OPTIONS
 Cable attached
 Special coil voltage
 Special coil powers
 CE certified coils

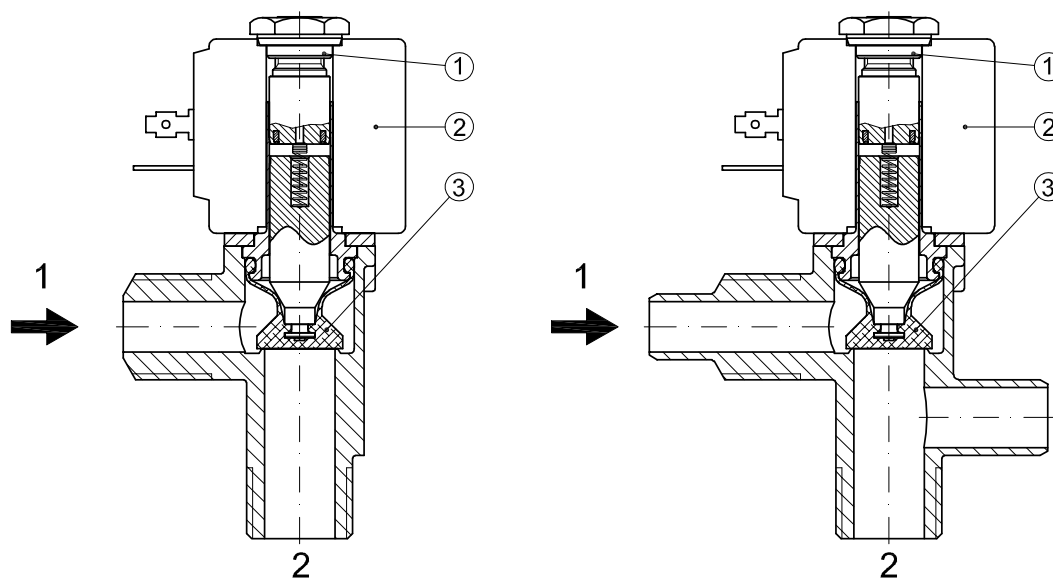
(for coil details see section 8)



Series 2 Weight 0.12Kg

SPARE PARTS LIST

1. Coil fixing nut
2. Coil
3. Diaphragm



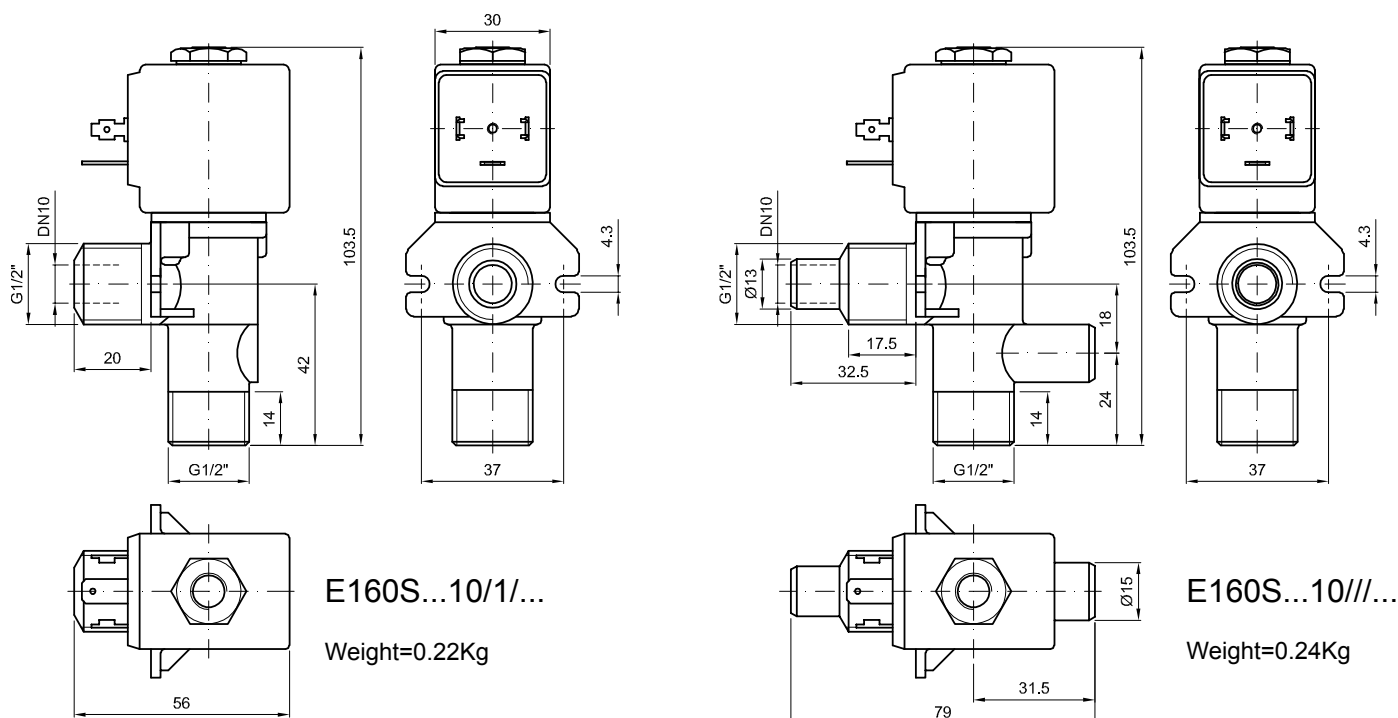
E160S...10/1/...

Version with closed vent

E160S...10///...

Version with open vent

OVERALL DIMENSION



E160S...10/1/...

Weight=0.22Kg

E160S...10///...

Weight=0.24Kg