

168 Series Valves



800.909.4988
info@rankinusa.com

RANKIN 
COMPONENTS THAT AUTOMATE

DESCRIPTION

Solenoid valve 2 way normally closed with assisted-lift diaphragm

CONSTRUCTION

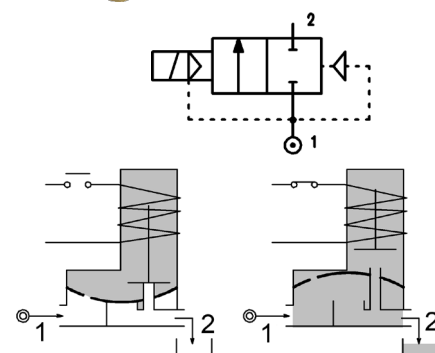
Body and cover	Brass
Armature tube	AISI 303
Plunger and core	AISI 430FR
Springs	AISI 302
Seal material	FPM
	NBR (on request)



FEATURES


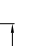
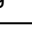


- Maximum allowable pressure PS 16bar^③
- Maximum fluid viscosity 25cSt (mm²/s)
- Ambient temperature: from -10°C to +80°C according to the coil
- Preferred mounting position with vertical coil above

- OPTIONS:**
- UL[®] US certified coils
 - NPT connections
 - ATEX Ex d coils
 - Degreased for use with oxygen

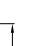


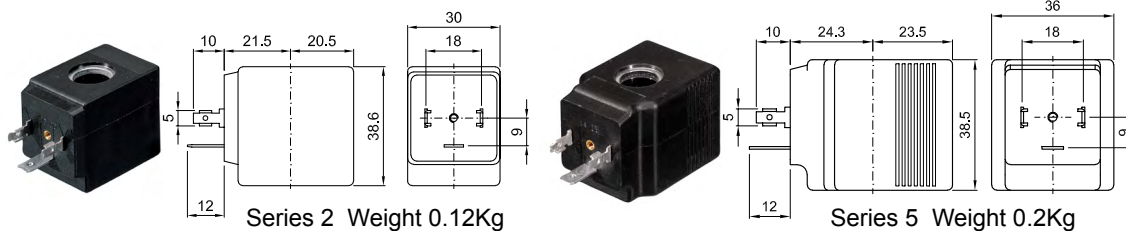
CODE ① ②	Connection G ISO 228	Orifice mm Ø	Kv m ³ /h	Differential pressure bar		Nominal power	Coil		Seal ①	Temp. range °C	
				Min	Max		Series	Width			
E168CV11///...	3/8"	11	1.2	0	14	5	10W	2	30	FPM=V	-10 +140
					-	14	27W	5	36		
E168DV16///...	1/2"	16	2.4	0	14	2.5	10W	2	30		
					-	14	27W	5	36		
E168EV16///...	3/4"	16	2.4	0	14	2.5	10W	2	30		
					-	14	27W	5	36		
E168EV20/H/...	3/4"	20	7.2	0	16	5	10W	2	30		
					-	16	27W	5	36		
E168FV25///...	1"	25	7.2	0	8	-	10W	2	30		
					14	1.5	14W	5	36		
					-	6	27W	5	36		
E168FV25/H/...	1"	25	8.4	0	16	5	10W	2	30		
					-	16	14W	5	36		
E168GV35///...	1"1/4	35	16.2	0	16	-	10W	2	30		
					-	6	14W	5	36		
					-	16	27W	5	36		
E168HV40///...	1"1/2	40	16.8	0	16	-	10W	2	30		
					-	6	14W	5	36		
					-	16	27W	5	36		

- ① Seal
- ② Coil
- ③ The maximum allowable pressure PS for steam 2,5bar (gauge pressure)

COILS ②	Alternating Current 50/60Hz (V)							Direct Current (V)		Electrical connection	Connectors
	12	24	48	110	220 230	240	380	12	24		
Series 2 Width 30-10W	20A	20B	20C	20D	20E	20F	20G	200	201	DIN 43650A	PG9 code 10349000 or PG11 code 10349001
Series 5 Width 36-14W	-	U55B c 	-	U55D c 	-	U55F c 	-	U550 c 	U551 c 		
Series 5 Width 36-27W	52A	52B	52C	52D	52E	52F	52G	520	521		

DESCRIPTION
 Insulation class
 Series 2 =F Series 5=H
 Voltage tolerance
 AC +15% -10%
 DC ± 10%
 Protection class
 IP65 with connector fitted
 IP00 without connector

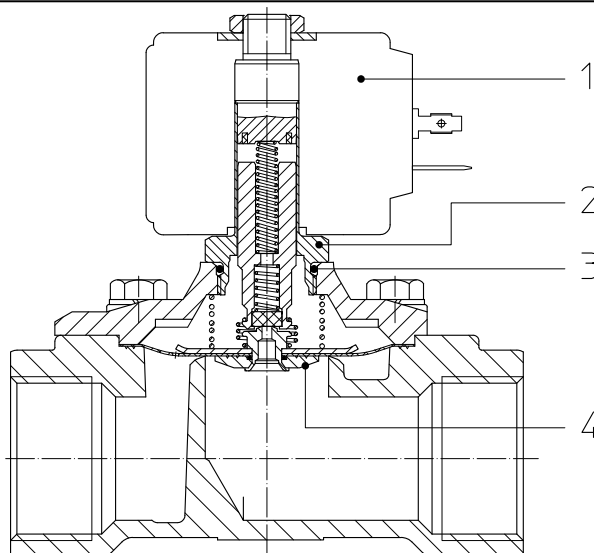
OPTIONS
 Class H insulation (series 2)
 Cable attached
 Special coil voltage
 Special coil powers
 c  certified coils



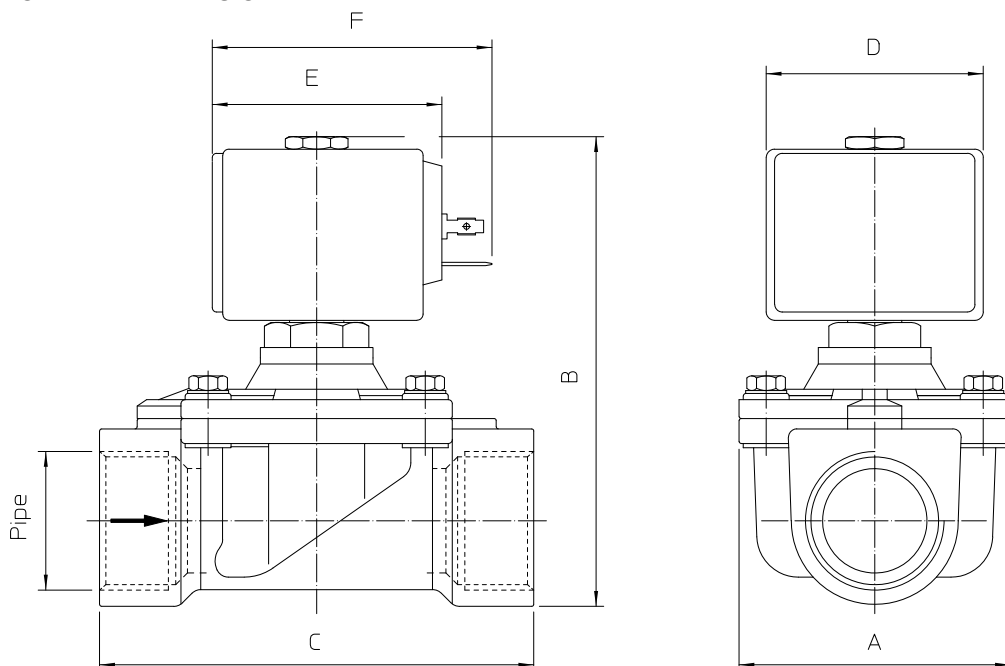
(for coil details see section 8)

SPARE PARTS LIST

1. Coil
2. Armature tube
3. Armature tube OR
4. Diaphragm assembly+plunger



OVERALL DIMENSION



PIPE	A	B	C
G3/8"	50	89	56
G1/2"	50	100	70
G3/4"	50	100	70
G3/4" /H	65	103	104
G1"	65	112	104
G1" /H	65	110	104
G1"1/4	94	130	128
G1"1/2	94	130	128

COIL TYPE	D	E	F
Series 2 30mm	30	42	54
Series 5 36mm	36	48	60