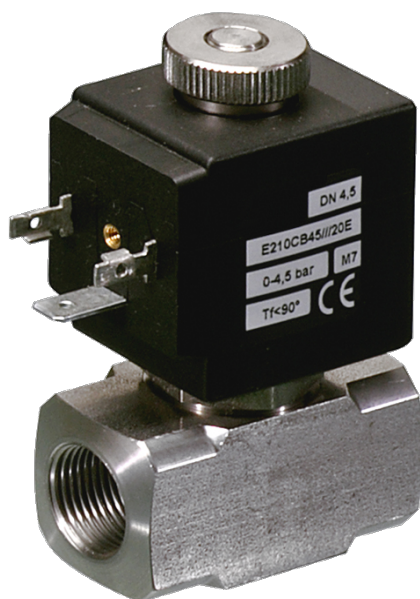


210 Series Valves



800.909.4988
info@rankinusa.com

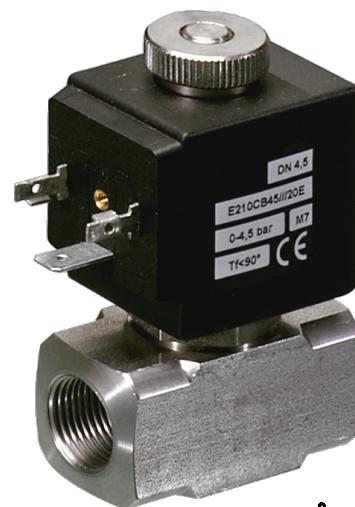
RANKIN 
COMPONENTS THAT AUTOMATE

DESCRIPTION

Solenoid valve 2 way normally open direct acting poppet type

CONSTRUCTION


Body	AISI 303
Armature tube	AISI 303
Plunger and core	AISI 430FR
Springs	AISI 302
Seal material	NBR - FPM - EPDM



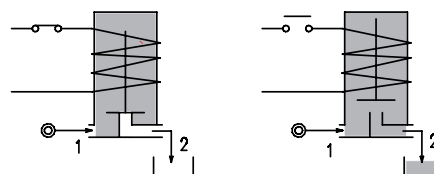
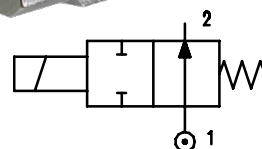
2

FEATURES

- Maximum allowable pressure PS 50bar^③
- Maximum fluid viscosity 25cSt (mm²/s)
- Ambient temperature: from -10°C to +80°C according to the coil
- Universal mounting position

OPTIONS: Silver shading ring
 Versions for use with industrial oxygen
 c  us certified coils

ON REQUEST: Versions for use with fluid temperature at -40°C
 Manual override



CODE ① ② ③	Connection G ISO 228	Orifice mm	Kv m ³ /h	Pressure range bar			Nominal power			Coil		Seal ②	Temp. range °C	
				Min	Max		AC Inrush	VA Holding	DC Watt	Series	Width			
					AC	DC								
E210... ..10///...	1/4"	1	0.04	0	80	20	15	-	2	30	NBR=B	-10 +90		
E210... ..15///...		1.5	0.07	0	23									
E210... ..20///...		2	0.1	0	17									
E210... ..25///...		2.5	0.15	0	12									
E210... ..30///...		3/8"	3	0.25	0								9	
E210... ..35///...		1/2"	3.5	0.32	0								7	
E210... ..40///...			4	0.36	0								5.5	
E210... ..45///...			4.5	0.41	0								4.5	
E210... ..52///...	5.2		0.47	0	3									
D210... ..10///...	1/4"	1	0.04	0	-	-	-	10	2	30	EPDM=E	-10 +140		
D210... ..15///...		1.5	0.07	0	-								18	
D210... ..20///...		2	0.1	0	-								11	
D210... ..25///...		2.5	0.15	0	-								7	
D210... ..30/3/...		3/8"	3	0.25	0								-	6.5
D210... ..35/3/...		1/2"	3.5	0.32	0								-	4
D210... ..40/3/...			4	0.36	0								-	3.5
D210... ..45/3/...			4.5	0.41	0								-	3
D210... ..52/3/...	5.2		0.47	0	-	2.2								
E210... ..10///	1/4"	1	0.04	0	80	40	30	27	5	36	FPM=V	-10 +140		
E210... ..15///...		1.5	0.07	0	23								23	
E210... ..20///...		2	0.1	0	17								17	
E210... ..25///...		2.5	0.15	0	12								12	
E210... ..30///...		3/8"	3	0.25	0								9	9
E210... ..35///...		1/2"	3.5	0.32	0								7	7
E210... ..40///...			4	0.36	0								5.5	5.5
E210... ..45///...			4.5	0.41	0								4.5	4.5
E210... ..52///...	5.2		0.47	0	3	3								
E210... ..64///...		6.4	0.64	0	3.5	3.5								

① Connection: B=1/4", C=3/8", D=1/2"

② Seal

③ Coil

④ The maximum allowable pressure PS for steam is 2.5bar (gauge pressure)

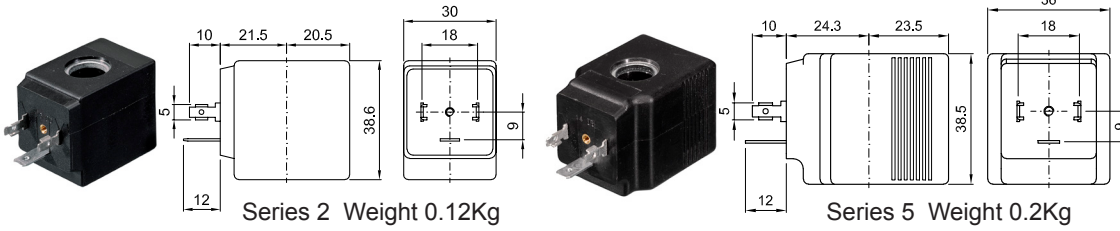
Example: E210BB25///20B 1/4" connection, NBR seal
 Coil 24V 50/60Hz

COILS ③	Alternating Current 50/60Hz (V)							Direct Current (V)			Electrical connection	Connectors
	12	24	48	110	220 230	240	380	12	24	48		
Series 2 Width 30	20A	20B	20C	20D	20E	20F	20G	200	201	202	DIN 43650A	PG9 code 10349000
Series 5 Width 36	52A	52B	52C	52D	52E	52F	52G	520	521	522	DIN 43650A	PG11 code 10349001

DESCRIPTION
 Insulation class
 Series 2 =F Series 5=H
 Voltage tolerance
 AC +15% -10%
 DC ± 10%
 Protection class
 IP65 with connector fitted
 IP00 without connector

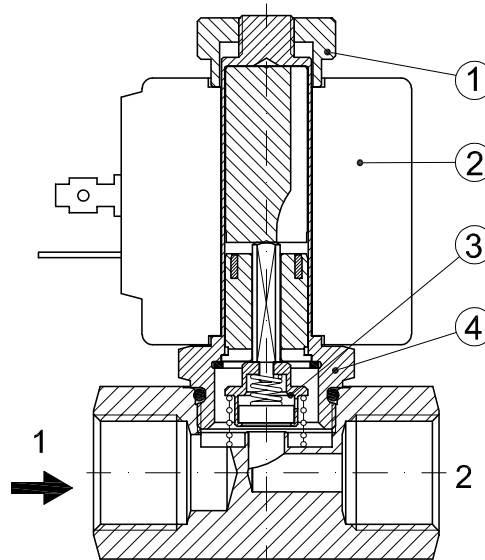
OPTIONS
 Class H insulation (series 2)
 Cable attached
 Special coil voltage
 Special coil powers
 c US certified coils

(for coil details see section 8)

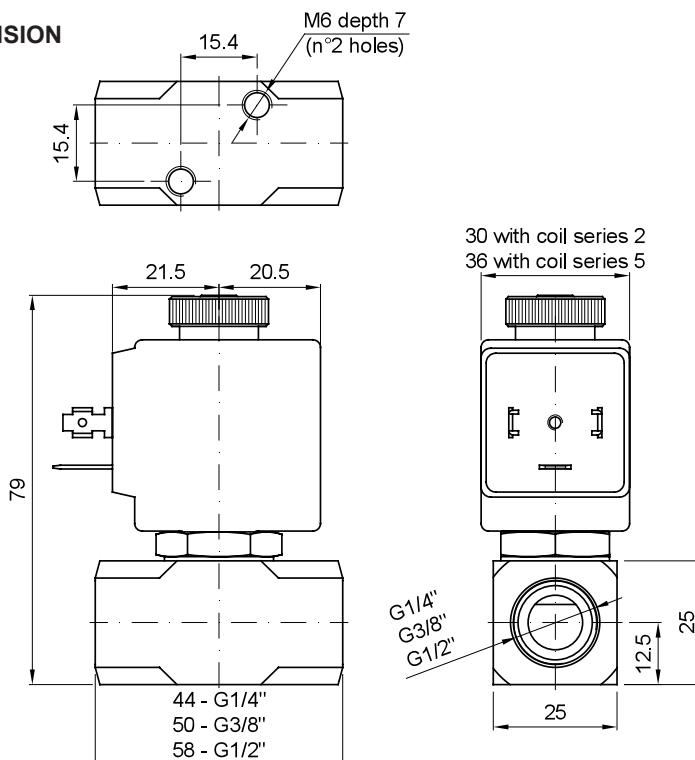


SPARE PARTS LIST

1. Coil fixing nut
2. Coil
3. Seal assembly
4. Armature tube assembly



OVERALL DIMENSION



Weight with coil series 2=0.30Kg
 Weight with coil series 5=0.38Kg