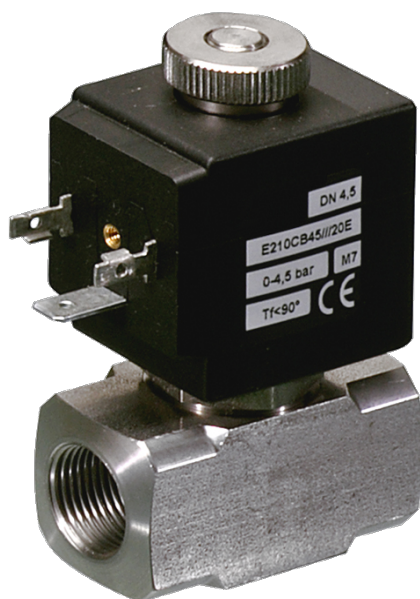


210 Series Valves



800.909.4988
info@rankinusa.com

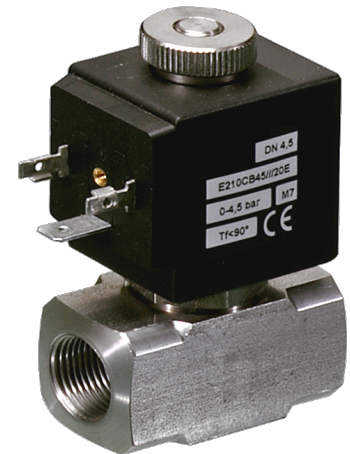
RANKIN 
COMPONENTS THAT AUTOMATE

DESCRIPTION

Solenoid valve 2 way normally open
direct acting poppet type

CONSTRUCTION

| | |
|------------------|------------------|
| Body | AISI 303 |
| Armature tube | AISI 303 |
| Plunger and core | AISI 430FR |
| Springs | AISI 302 |
| Seal material | NBR - FPM - EPDM |

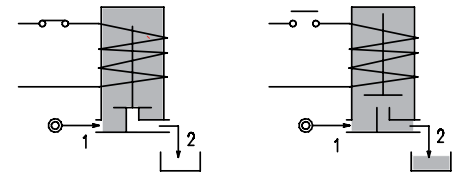
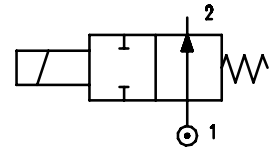


FEATURES

Maximum fluid viscosity 25cSt (mm²/s)
Ambient temperature: from +14°F to +176°F according to the coil
Universal mounting position

OPTIONS: Silver shading ring
Version for use with industrial oxygen

ON REQUEST: Versions for use with fluid temperature at -40°C
Manual override



| CODE ① ② ③ | Port Size NPT | Orifice Size | | Flow Factor Cv (gpm) | Operating Pressure Differential (M.O.P.D.) ④ | | | | Nominal power | | | Coil | | Seal ② | Temp. range (°F) | |
|---------------------|------------------|--------------|------|-------------------------|--|-------|-------|------------|---------------|-----------|--------|---------------|--------|-----------|---------------------|----------|
| | | (in) | (mm) | | Min | Max | | AC (VA) | | DC (W) | Series | Width (mm) | | | | |
| | | | | | | (psi) | (bar) | (psi) | (bar) | | | | Inrush | | | Holding |
| E210...N...20///... | 1/4 | 0.079 | 2 | 0.116 | 0 | 246 | 17 | - | - | 20 | 15 | - | 2 | 30 | NBR=B | +14 +194 |
| E210...N...25///... | 3/8 | 0.098 | 2.5 | 0.173 | 0 | 174 | 12 | - | - | | | | | | | |
| E210...N...35///... | 1/2 | 0.138 | 3.5 | 0.370 | 0 | 101 | 7 | - | - | | | | | | | |
| E210...N...45///... | | 0.177 | 4.5 | 0.474 | 0 | 65 | 4.5 | - | - | | | | | | | |
| D210...N...20/3/... | 1/4 | 0.079 | 2 | 0.116 | 0 | - | - | 246 | 17 | - | - | 10 | 2 | 30 | EPDM=E | +14 +284 |
| D210...N...25/3/... | 3/8 | 0.098 | 2.5 | 0.173 | 0 | - | - | 174 | 12 | | | | | | | |
| D210...N...35/3/... | 1/2 | 0.138 | 3.5 | 0.370 | 0 | - | - | 58 | 4 | | | | | | | |
| D210...N...45/3/... | | 0.177 | 4.5 | 0.474 | 0 | - | - | 43.5 | 3 | | | | | | | |
| E210...N...20///... | 1/4 | 0.079 | 2 | 0.116 | 0 | 246 | 17 | 246 | 17 | 27 | 20 | 14 | 5 | 36 | FPM=V | +14 +284 |
| E210...N...25///... | 3/8 | 0.098 | 2.5 | 0.173 | 0 | 174 | 12 | 174 | 12 | | | | | | | |
| E210...N...35///... | 1/2 | 0.138 | 3.5 | 0.370 | 0 | 101 | 7 | 101 | 7 | | | | | | | |
| E210...N...45///... | | 0.177 | 4.5 | 0.474 | 0 | 65 | 4.5 | 65 | 4.5 | | | | | | | |

① Port size: B= 1/4 C=3/8 D=1/2

② Seal Ordination example: E210DNB35///U25B NBR seal, connection 1/2 NPT

③ Coil Coil 24V 60Hz certified us and marked

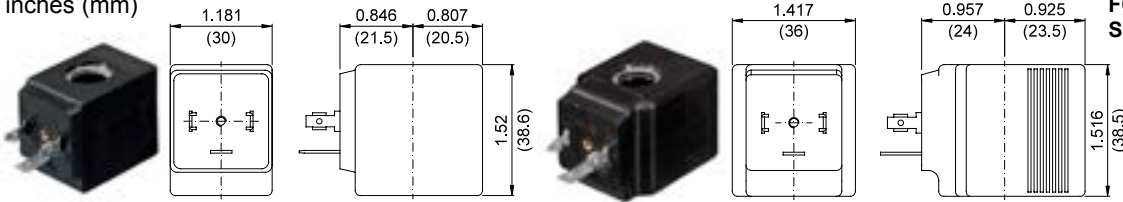
④ Safe Working Pressure:725 psi. Is the line or system pressure to which the valve may be subjected without being damaged.
The maximum allowable pressure PS for steam is 36 psi.

| COILS Code ③ | Alternating Current | | | | | | Direct Current | | | | Electrical connection | Connectors | DESCRIPTION Insulation class F or H Voltage tolerance ±10% Protection class: IP65 with connector attached IP00 without connector Continuous service ED100% |
|------------------------|---------------------|-----|---------------|-----|---------------|-----|----------------|-----|---------------|-----|-----------------------|--------------------------|--|
| | 24V | | 120V | | 240V | | 12V | | 24V | | | | |
| Series 2 Width 30mm | U25B c us | 201 | U25D c us | 20D | U25F c us | 20F | U250 c us | 200 | U251 c us | 201 | DIN 43650A | PG9 code 10349000 | |
| Series 5 Width 36mm | U55B c us | 521 | U55D c us | 52D | U55F c us | 52F | U550 c us | 520 | U551 c us | 521 | DIN 43650A | PG11 code 10349001 | |

OPTIONS
Cable attached
Special coil voltage
Special coil powers

OVERALL DIMENSIONS

inches (mm)



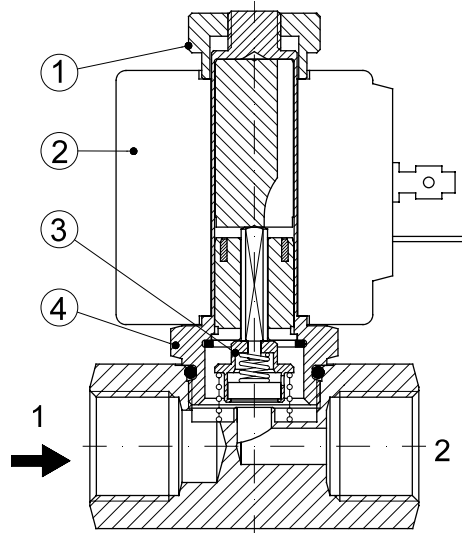
Series 2 Weight 0.26lb (0.12Kg)

Series 5 Weight 0.44lb (0.20Kg)

FOR COIL SPECIFICATION SEE SECTION 6

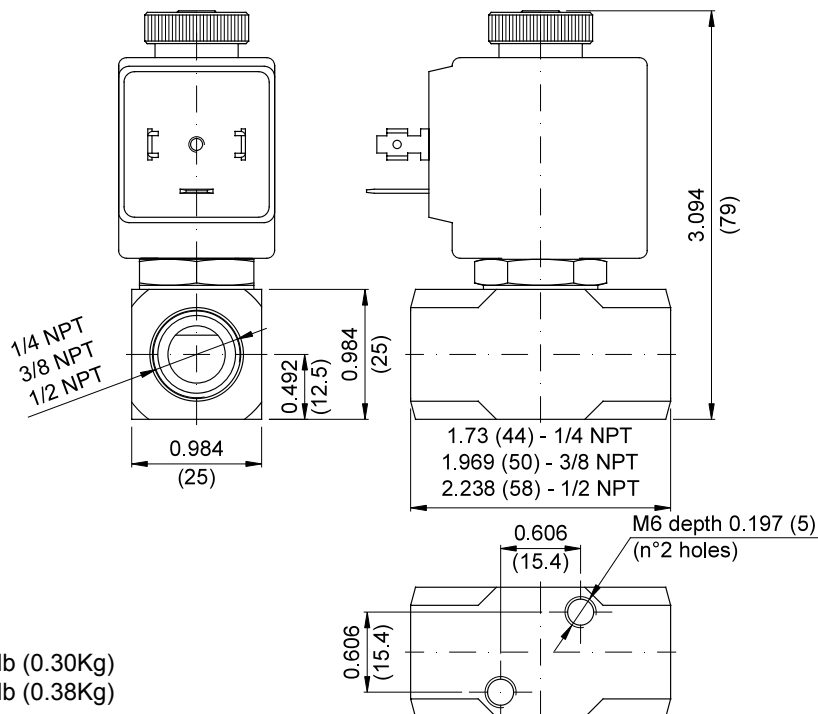
SPARE PARTS LIST

1. Coil fixing nut
2. Coil
3. Seal assembly
4. Armature tube assembly



OVERALL DIMENSIONS

inches (mm)



Weight with coil series 2=0.66lb (0.30Kg)
Weight with coil series 5=0.84lb (0.38Kg)