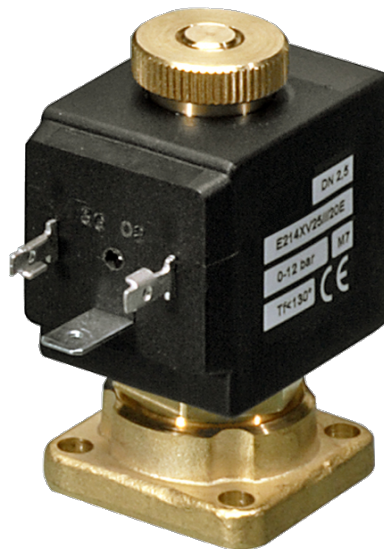


214 Series Valves



800.909.4988
info@rankinusa.com

RANKIN 
COMPONENTS THAT AUTOMATE

DESCRIPTION

Solenoid valve 2 way normally open
direct acting poppet type

CONSTRUCTION

Body	Brass
Armature tube	Brass
Plunger and core	AISI 430FR
Springs	AISI 302
Seal material	NBR - FPM - EPDM



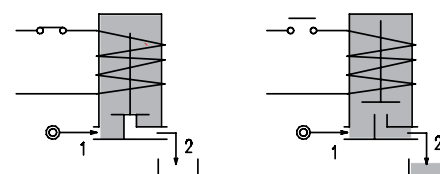
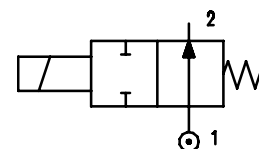
2

FEATURES

Maximum fluid viscosity 25cSt (mm²/s)
Ambient temperature: from +14°F to +176°F according to the coil
Universal mounting position

OPTIONS: Stainless steel armature tube
Electroless nickel plating

ON REQUEST: Versions for use with fluid temperature at -40°C
Manual override



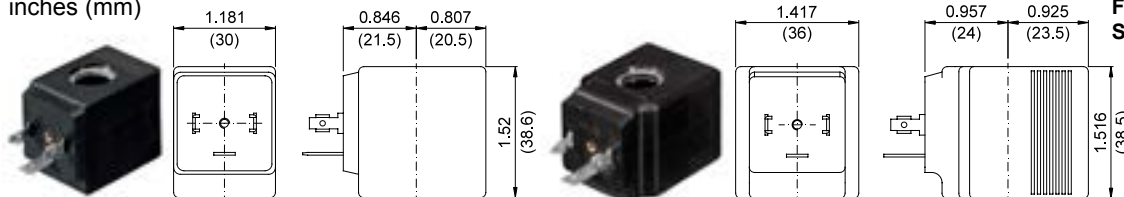
CODE ① ②	Square Flange □1.26in (□32mm)	Orifice Size		Flow Factor Cv (gpm)	Operating Pressure Differential (M.O.P.D.) ③				Nominal power			Coil		Seal ①	Temp. range (°F)	
		(in)	(mm)		Min	Max		AC (VA) Inrush Holding	DC (W)	Series	Width (mm)					
						(psi)	(bar)					(psi)	(bar)			
E214X...15///...	□1.26in (□32mm)	0.059	1.5	0.081	0	333	23	-	-	20	15	-	2	30	NBR=B	+14 +194
E214X...20///...		0.079	2	0.116	0	246	17	-	-							
E214X...25///...		0.098	2.5	0.173	0	174	12	-	-							
E214X...35///...		0.138	3.5	0.370	0	101	7	-	-							
E214X...45///...		0.177	4.5	0.474	0	65	4.5	-	-							
D214X...15/5/...	□1.26in (□32mm)	0.059	1.5	0.081	0	-	-	261	18	-	-	10	2	30	EPDM=E	+14 +284
D214X...20/5/...		0.079	2	0.116	0	-	-	159	11							
D214X...25/5/...		0.098	2.5	0.173	0	-	-	101	7							
D214X...35/5/...		0.138	3.5	0.370	0	-	-	58	4							
D214X...45/5/...		0.177	4.5	0.474	0	-	-	43	3							
E214X...15///...	□1.26in (□32mm)	0.059	1.5	0.081	0	333	23	333	23	27	20	14	5	36	FPM=V	+14 +284
E214X...20///...		0.079	2	0.116	0	246	17	246	17							
E214X...25///...		0.098	2.5	0.173	0	174	12	174	12							
E214X...35///...		0.138	3.5	0.370	0	101	7	101	7							
E214X...45///...		0.177	4.5	0.474	0	65	4.5	65	4.5							

- ① Seal Ordination example: E214XB25///U25F NBR seal
- ② Coil Coil 240V 60Hz certified c us and marked
- ③ Safe Working Pressure: 725 psi. Is the line or system pressure to which the valve may be subjected without being damaged.
The maximum allowable pressure PS for steam is 36 psi.

COILS Code ②	Alternating Current						Direct Current				Electrical connection	Connectors	DESCRIPTION Insulation class F or H Voltage tolerance ±10% Protection class: IP65 with connector attached IP00 without connector Continuous service ED100%
	24V		120V		240V		12V		24V				
Series 2 Width 30mm	U25B c US	201	U25D c US	20D	U25F c US	20F	U250 c US	200	U251 c US	201	DIN 43650A	PG9 code 10349000	OPTIONS Cable attached Special coil voltage Special coil powers
Series 5 Width 36mm	U55B c US	521	U55D c US	52D	U55F c US	52F	U550 c US	520	U551 c US	521	DIN 43650A	PG11 code 10349001	

OVERALL DIMENSIONS

inches (mm)



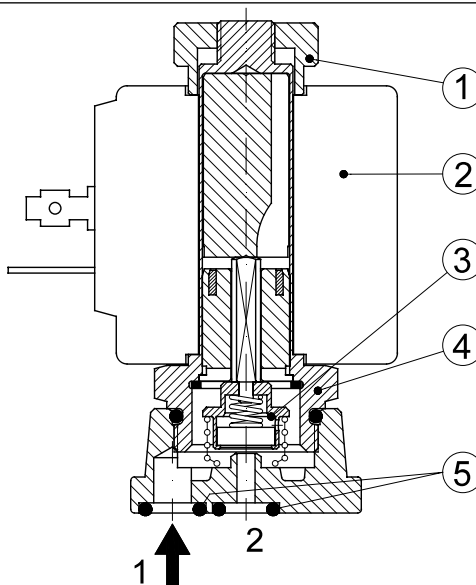
Series 2 Weight 0.26lb (0.12Kg)

Series 5 Weight 0.44lb (0.20Kg)

FOR COIL SPECIFICATION SEE SECTION 6

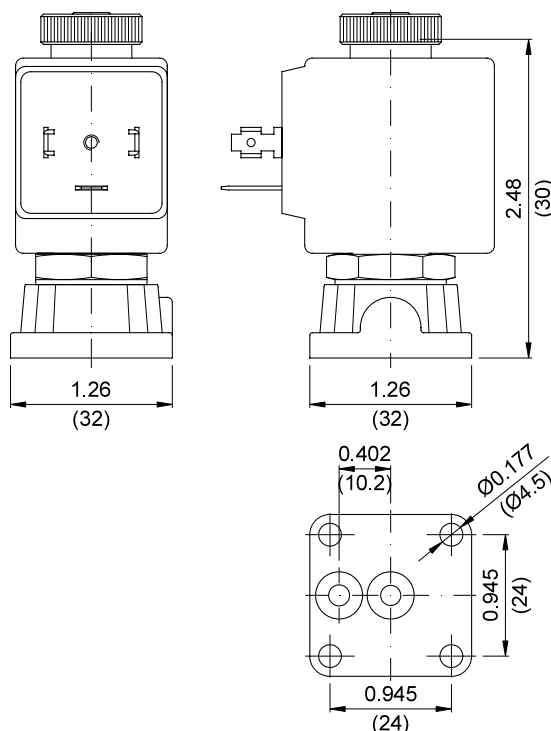
SPARE PARTS LIST

1. Coil fixing nut
2. Coil
3. Seal assembly
4. Armature tube assembly
5. OR 2025



OVERALL DIMENSIONS

inches (mm)



Weight with coil series 2=0.55lb (0.25Kg)

Weight with coil series 5=0.73lb (0.33Kg)