

230 Series Valves



800.909.4988
info@rankinusa.com

RANKIN 
COMPONENTS THAT AUTOMATE

DESCRIPTION


Solenoid valve in line normally open direct acting poppet type.

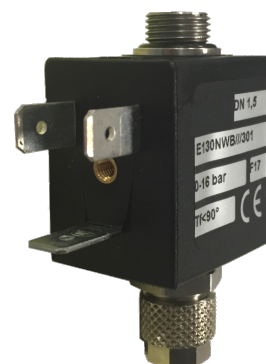
CONSTRUCTION

Body/Armature tube	AISI 303
Plunger and core	AISI 430FR
Springs	AISI 302
Seal material	NBR - FPM - EPDM

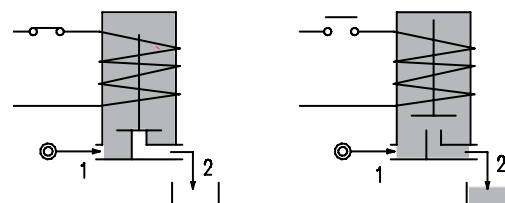
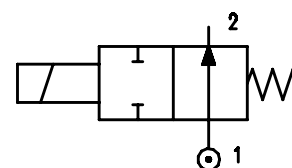
FEATURES

Maximum fluid viscosity 25cSt (mm²/s)
 Ambient temperature: from +14°F to +176°F according to the coil
 Universal mounting position

OPTIONS: Mounting bracket
 Version for use with industrial oxygen
 c  us certified coils



2



CONFIGURATIONS			
G1/8"MALE - Push-on for pipes Ø6x4mm (Ø1/4) NW	G1/8"MALE - G1/8"FEMALE NA	G1/8"FEMALE - Push-on for pipes Ø6x4mm (Ø1/4) AW	G1/8"FEMALE - G1/8"FEMALE AA

CODE ① ② ③	Orifice size		Flow Factor Cv (gpm)	Operating Pressure Differential (M.O.P.D.)				Electrical data		Coil		Seal ②	Temperature range (°F)
	(in)	(mm)		Min	Max		Voltage (V)	Power	Series	Width (mm)			
					AC (psi)	bar					DC (psi)		
E230.....15///...	0.06	1.5	0.057	0	145	10	145	10	All standard voltages	6.5W or 8VA	3	22	NBR=B +14 +194 FPM=V +14 +284 EPDM=E +14 +284

- ① Configuration
 - ② Seal
 - ③ Coil
- Example: E230NAB15///U350 - G1/8" male - G1/8" female connections
 NBR seal - 12V DC 6.5W UL

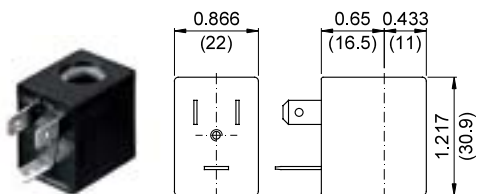
Series 230

COILS	Alternating Current (Volt)							Direct Current (Volt)			Electrical connection	Connectors
	12	24	48	110	220 230	240	380	12	24	48		
Series 3 Width 22 6.5W or 8VA CODE ③	30A	30B U35B c RL US	30C	30D U35D c RL US	30E	30F U35F c RL US	30G	300 c RL US	301 c RL US	302	DIN 46244	PG9 CODE 10348000

DESCRIPTION
 Class F insulation
 Voltage tolerance
 AC +15% -10%
 DC ± 10%
 Protection class
 IP65 with connector fitted
 IP00 without connector
 Continuous service ED100%

OPTIONS
 Class H insulation
 Cable attached
 Special coil voltage
 Special coil powers

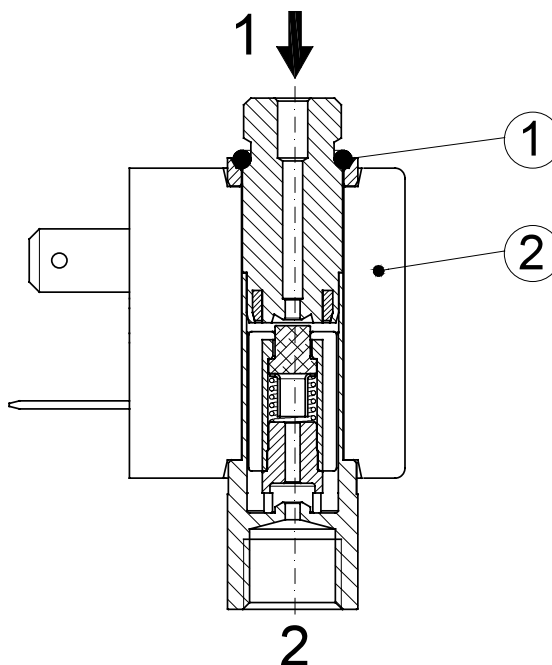
**FOR COIL SPECIFICATION
 SEE SECTION 6**



Series 3 Weight 0.11lb (0.05Kg)

SPARE PARTS LIST

1. OR
2. Coil



OVERALL DIMENSIONS

inches (mm)

