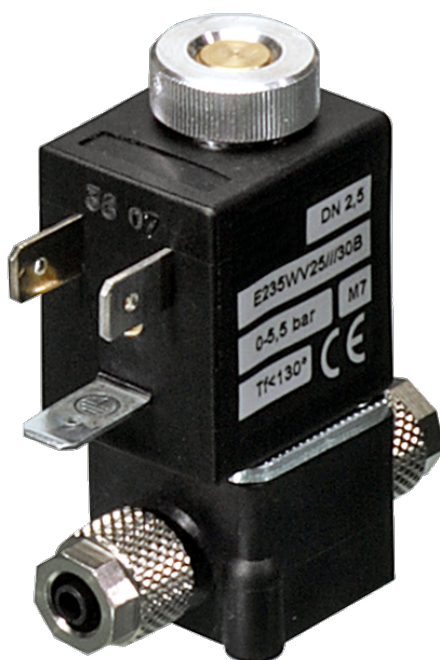


235 Series Valves



800.909.4988
info@rankinusa.com

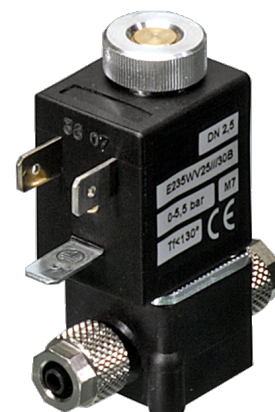
RANKIN 
COMPONENTS THAT AUTOMATE

DESCRIPTION

Solenoid valve 2 way normally open direct acting poppet type, suitable for food applications and all compatible fluids.

CONSTRUCTION

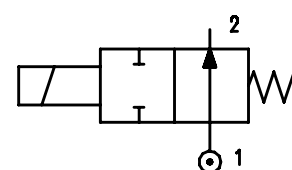
Body	Thermoplastic polymer ACS, KTW, W270, WRAS, NSF, FDA certified
Armature tube	Brass chemically nickel plated
Plunger and core	AISI 430FR
Springs	AISI 302
Seal material	NBR - FPM - EPDM



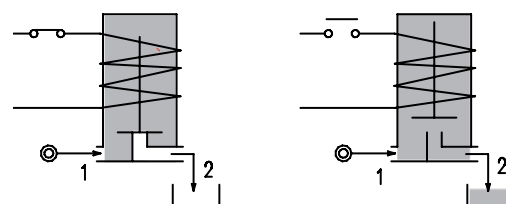
2

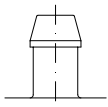
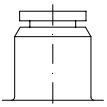
FEATURES

Maximum fluid viscosity 25cSt (mm²/s)
Ambient temperature: from +14°F to +176°F according to the coil
Universal mounting position



OPTIONS: Stainless steel armature tube



CONNECTIONS	
P	Z
	
HOSETAIL for flexible pipes	PUSH IN for semiflexible pipes Øext 5/32"

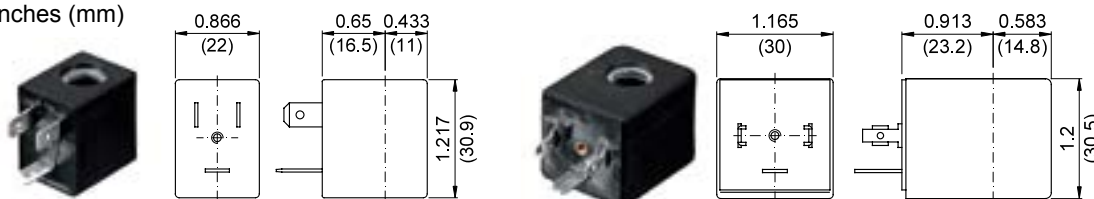
CODE	Port type	Orifice Size		Flow Factor Cv	Operating Pressure Differential (M.O.P.D.) ③				Nominal power			Coil		Seal	Temp. range ④	
		(in)	(mm)		Min	Max		AC (VA)	DC	Series	Width					
						AC (psi)	AC (bar)					DC (psi)	DC (bar)			
E235 * ...15///...	Z	0.059	1.5	0.069	0	188	13	188	13	12	8	6.5	3	22	NBR=B	+14 +194
E235 * ...20///...	Z	0.079	2	0.104	0	101	7	101	7							
E235 * ...25///...	P - Z	0.098	2.5	0.162	0	50	3.5	50	3.5	15	11	8	4	30	EPDM=E	+14 +284
E235 * ...15///...	Z	0.059	1.5	0.069	0	188	13	188	13							
E235 * ...20///...	Z	0.079	2	0.104	0	101	7	101	7	15	11	8	4	30	FPM=V	+14 +284
E235 * ...25///...	P - Z	0.098	2.5	0.162	0	50	3.5	50	3.5							

- ① Seal Ordination example: E235PA20///U351 NBR seal, hose tail connection
- ② Coil Coil 24V DC certified cULus and marked CE
- ③ Safe Working Pressure: 290 psi. Is the line or system pressure to which the valve may be subjected without being damaged. The maximum allowable pressure PS for steam is 36 psi.
- ④ The temperature range is related to the material of the seals (NBR, EPDM, FPM), and the valves' body. Please contact us concerning the temperature range referred to the different types of connection.
- ⑤ Direct current (DC) series 3 coil available only without UL certification

COILS Code ②	Alternating Current						Direct Current				Electrical connection	Connectors	DESCRIPTION Class F or H insulation Voltage tolerance $\pm 10\%$ Protection class: IP65 with connector attached IP00 without connector Continuous service ED100%
	24V		120V		240V		12V		24V				
Series 3 Width 22mm	U35B c	30B	U35D c	30D	U35F c	30F	-	300	-	301	DIN 46244	PG9 code 10348000	
Series 4 Width 30mm	-	40B	-	40D	-	40F	U450 c	400	U451 c	401	DIN 43650A	PG9 code 10349000	

OVERALL DIMENSIONS

inches (mm)



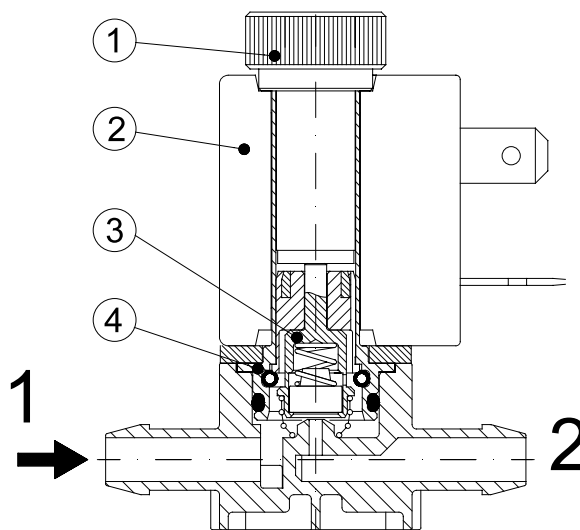
Series 3 Weight 0.11lb (0.05Kg)

Series 4 Weight 0.22lb (0.1Kg)

FOR COIL SPECIFICATION SEE SECTION 6

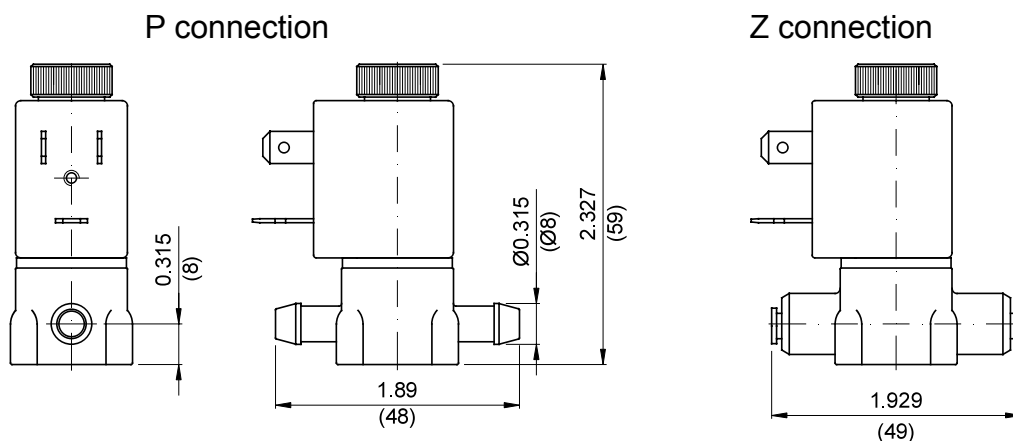
SPARE PARTS LIST

1. Coil fixing nut
2. Coil
3. Seal assembly
4. Armature tube assembly

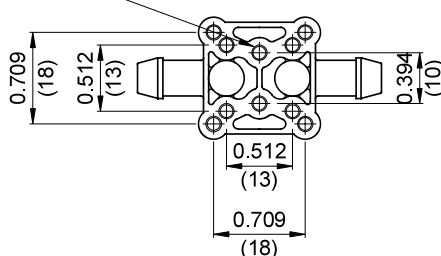


OVERALL DIMENSIONS

inches (mm)



Holes for self-threading screws $\text{Ø}0.118$ max depth 0.315
Max tightening torque 5 Nm



Weight with coil series 3=0.22lb (0.10Kg)