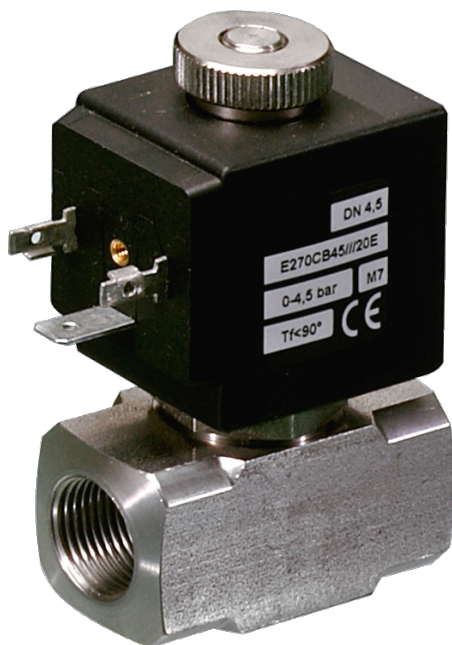


270 Series Valves



800.909.4988
info@rankinusa.com

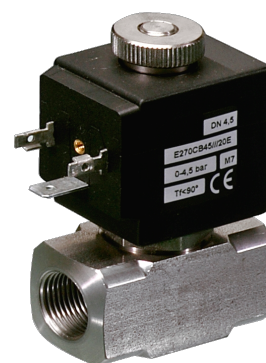
RANKIN 
COMPONENTS THAT AUTOMATE

DESCRIPTION

Solenoid valve 2 way normally open in stainless steel AISI 316 direct acting poppet type

CONSTRUCTION


Body	AISI 316
Armature tube	AISI 316
Plunger and core	AISI 430FR
Shading ring	Silver
Springs	AISI 316
Seal material	NBR - FPM - EPDM - PTFE - FFKM (Kalrez)



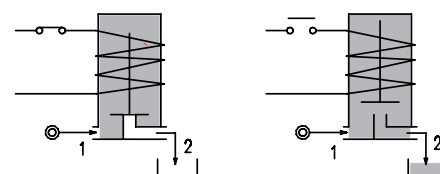
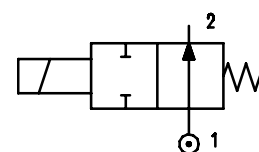
2

FEATURES

Maximum fluid viscosity 25cSt (mm²/s)
 Ambient temperature: from +14°F to +176°F according to the coil
 Universal mounting position

OPTIONS: Versions for use with industrial oxygen
 c  us certified coils

ON REQUEST: Versions for use with fluid temperature at -40°C



CODE ① ② ③	Port Size NPT	Orifice Size		Flow Factor Cv (gpm)	Operating Pressure Differential (M.O.P.D.) ④				Nominal power			Coil		Seal ②	Temp. range (°F)	
		(in)	(mm)		Min	Max		AC (VA) Inrush Holding	DC (W)	Series	Width (mm)					
						AC (psi) (bar)	DC (psi) (bar)									
E270...N...15///...	1/4 3/8 1/2	0.059	1.5	0.081	0	333	23	-	-	20	15	-	2	30	NBR=B	+14 +194
E270...N...20///...		0.079	2	0.116	0	246	17	-	-							
E270...N...25///...		0.098	2.5	0.173	0	174	12	-	-							
E270...N...30///...		0.118	3	0.289	0	130	9	-	-							
E270...N...35///...		0.138	3.5	0.370	0	101	7	-	-							
E270...N...40///...		0.157	4	0.416	0	79	5.5	-	-							
E270...N...45///...		0.177	4.5	0.474	0	65	4.5	-	-							
D270...N...15///...	1/4 3/8 1/2	0.059	1.5	0.081	0	-	-	261	18	-	-	10	2	30	EPDM=E	+14 +284
D270...N...20///...		0.079	2	0.116	0	-	-	159	11							
D270...N...25///...		0.098	2.5	0.173	0	-	-	101	7							
D270...N...30///...		0.118	3	0.289	0	-	-	94	6.5							
D270...N...35///...		0.138	3.5	0.370	0	-	-	58	4							
D270...N...40///...		0.157	4	0.416	0	-	-	50	3.5							
D270...N...45///...		0.177	4.5	0.474	0	-	-	43.5	3							
E270...N...15///...	1/4 3/8 1/2	0.059	1.5	0.081	0	333	23	333	23	27	20	14	5	36	FFKM=K	+14 +356
E270...N...20///...		0.079	2	0.116	0	246	17	246	17							
E270...N...25///...		0.098	2.5	0.173	0	174	12	174	12							
E270...N...30///...		0.118	3	0.289	0	130	9	130	9							
E270...N...35///...		0.138	3.5	0.370	0	101	7	101	7							
E270...N...40///...		0.157	4	0.416	0	79	5.5	79	5.5							
E270...N...45///...		0.177	4.5	0.474	0	65	4.5	65	4.5							

① Connection: B=1/4", C=3/8", D=1/2"

② Seal Ordination example: D270BNE35///U251 EPDM seal, connection 1/4 NPT

③ Coil Coil 24V DC certified c  us and marked CE

④ Safe Working Pressure: 725 psi. Is the line or system pressure to which the valve may be subjected without being damaged. The maximum allowable pressure PS for steam is 87 psi with PTFE seals and 36 psi with EPDM seals.

Series 270

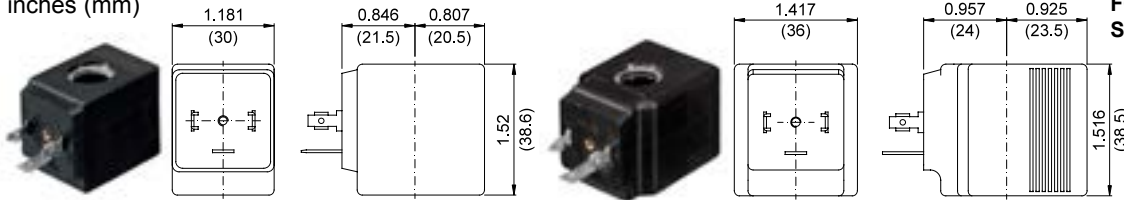
COILS Code ③	Alternating Current						Direct Current				Electrical connection	Connectors
	24V		120V		240V		12V		24V			
Series 2 Width 30mm	U25B c us	201	U25D c us	20D	U25F c us	20F	U250 c us	200	U251 c us	201	DIN 43650A	PG9 code 10349000
Series 5 Width 36mm	U55B c us	521	U55D c us	52D	U55F c us	52F	U550 c us	520	U551 c us	521	DIN 43650A	PG11 code 10349001

DESCRIPTION
 Insulation class F or H
 Voltage tolerance $\pm 10\%$
 Protection class:
 IP65 with connector attached
 IP00 without connector
 Continuous service ED100%

OPTIONS
 Cable attached
 Special coil voltage
 Special coil powers

OVERALL DIMENSIONS

inches (mm)



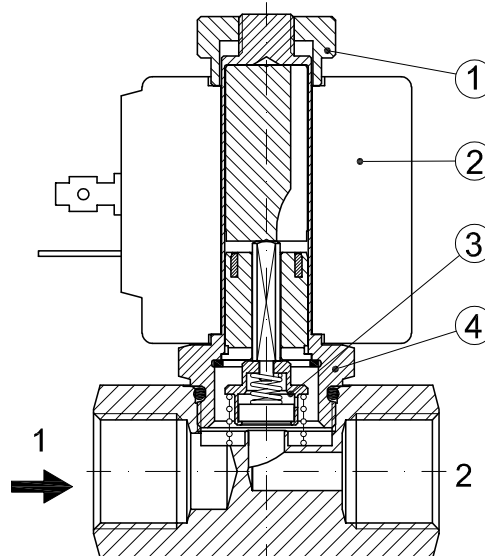
Series 2 Weight 0.26lb (0.12Kg)

Series 5 Weight 0.44lb (0.20Kg)

FOR COIL SPECIFICATION SEE SECTION 6

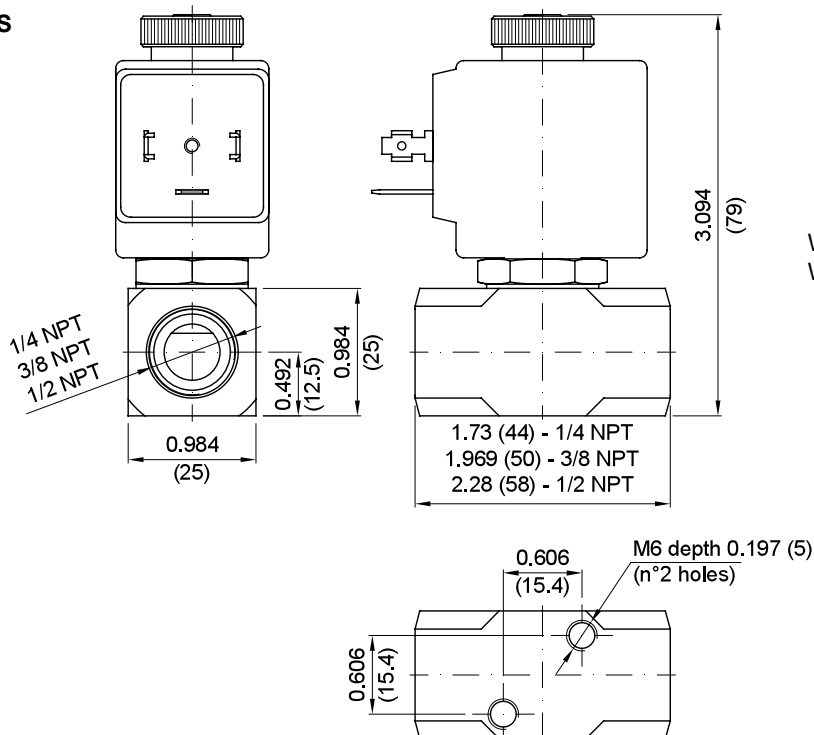
SPARE PARTS LIST

1. Coil fixing nut
2. Coil
3. Seal assembly
4. Armature tube assembly



OVERALL DIMENSIONS

inches (mm)



Weight with coil series 2=0.30Kg
 Weight with coil series 5=0.38Kg