

# 314 Series Valves



800.909.4988  
info@rankinusa.com

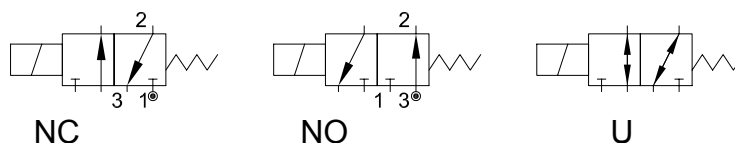
**RANKIN**   
COMPONENTS THAT AUTOMATE

## DESCRIPTION

Solenoid valve 3 way  
direct acting poppet type

## CONSTRUCTION

Body	Brass
Armature tube	AISI 303
Plunger and core	AISI 430FR
Springs	AISI 302
Seal material	NBR - FPM - EPDM

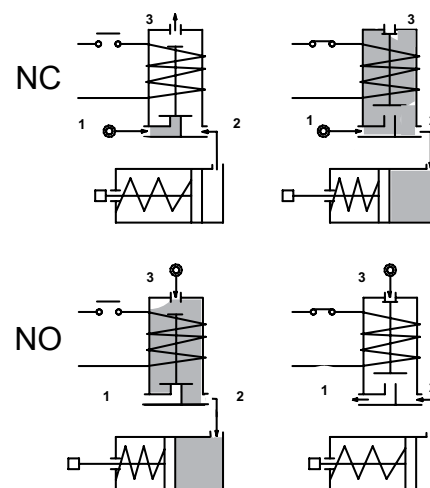


3

## FEATURES

Maximum fluid viscosity 25cSt (mm<sup>2</sup>/s)  
Ambient temperature: from +14°F to +176°F according to the coil  
Universal mounting position

**OPTIONS:** Manual override  
Electroless nickel plating  
Stainless steel seat



**ON REQUEST:** Versions for use with fluid temperature at -40°C

CODE ① ②	Port Size □1.26in (□32mm)	Orifice Size		Flow Factor Cv (gpm)	Operating Pressure Differential (M.O.P.D.) ③				Nominal power		Coil		Seal ①	Temp. range (°F)				
		Inlet (in) (mm)	Exhaust (in) (mm)		Min	Max		AC (VA) Inrush	DC (W) Holding	Series	Width (mm)							
<b>NC Normally closed</b>																		
E314X...15///...	□1.26in (□32mm)	0.059	1.5	0.094	2.4	0.081	0	290	20	290	20	20	15	10	2	30	NBR=B	+14 +194
E314X...20///...		0.079	2	0.094	2.4	0.127	0	188	13	188	13							
E314X...25///...		0.098	2.5	0.094	2.4	0.185	0	145	10	145	10							
<b>NO Normally open</b>																		
E314X...24/S/...	□1.26in (□32mm)	0.094	2.4	0.098	2.5	0.185	0	130	9	130	9	20	15	10	2	30	EPDM=E	+14 +284
E314X...29/S/...		0.114	2.9	0.118	3	0.231	0	94	6.5	94	6.5							
<b>U Universal</b>																		
E314X...25/G/...	□1.26in (□32mm)	0.098	2.5	0.094	2.4	0.185	0	72.5	5	58	4	20	15	10	2	30	FPM=V	+14 +284

① Seal

Ordination example: E314XB15///U251 NBR seal

② Coil

Coil 24V DC certified c us and marked

③ Safe Working Pressure: M.O.P.D. +10%.

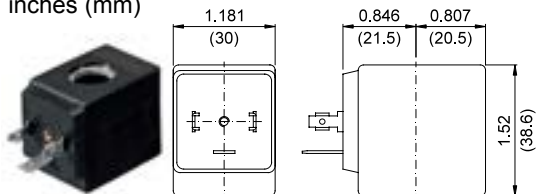
Is the line or system pressure to which the valve may be subjected without being damaged.

COILS Code ②	Alternating Current						Direct Current				Electrical connection	Connectors
	24V		120V		240V		12V		24V			
Series 2 Width 30mm	U25B c  US	201	U25D c  US	20D	U25F c  US	20F	U250 c  US	200	U251 c  US	201	DIN 43650A	PG9 code 10349000

**DESCRIPTION**  
 Insulation class F or H  
 Voltage tolerance ±10%  
 Protection class:  
 IP65 with connector attached  
 IP00 without connector  
 Continuous service ED100%

### OVERALL DIMENSIONS

inches (mm)



Series 2 Weight 0.26lb (0.12Kg)

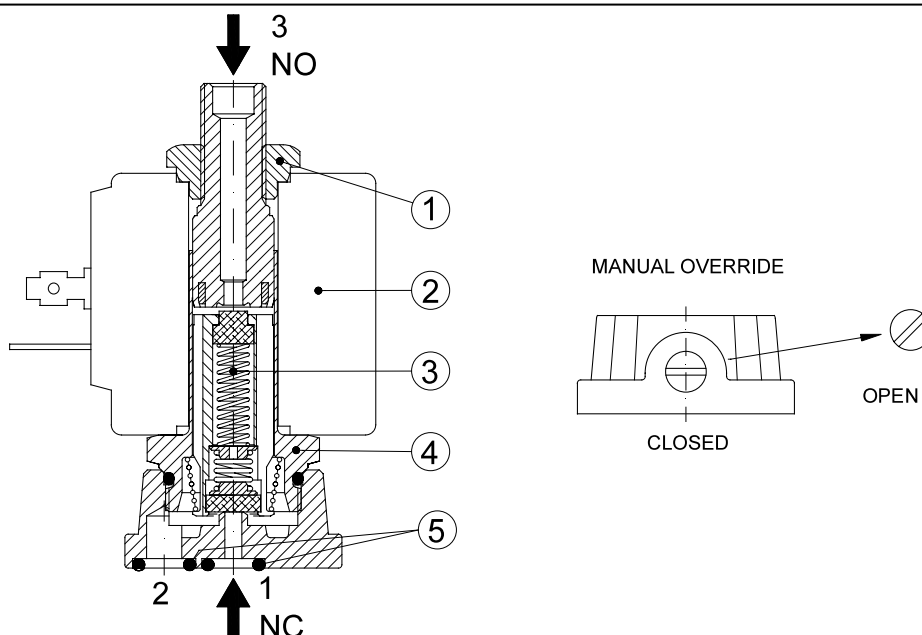
### OPTIONS

Cable attached  
 Special coil voltage  
 Special coil powers

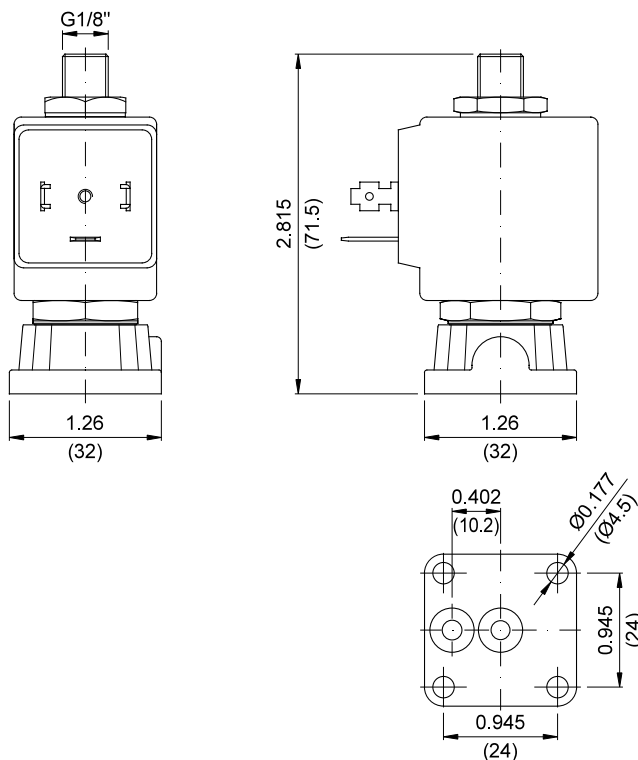
**FOR COIL SPECIFICATION SEE SECTION 6**

### SPARE PARTS LIST

1. Coil fixing nut
2. Coil
3. Plunger
4. Armature tube assembly
5. OR 2010



### OVERALL DIMENSION



Weight=0.55lb (0.25Kg)