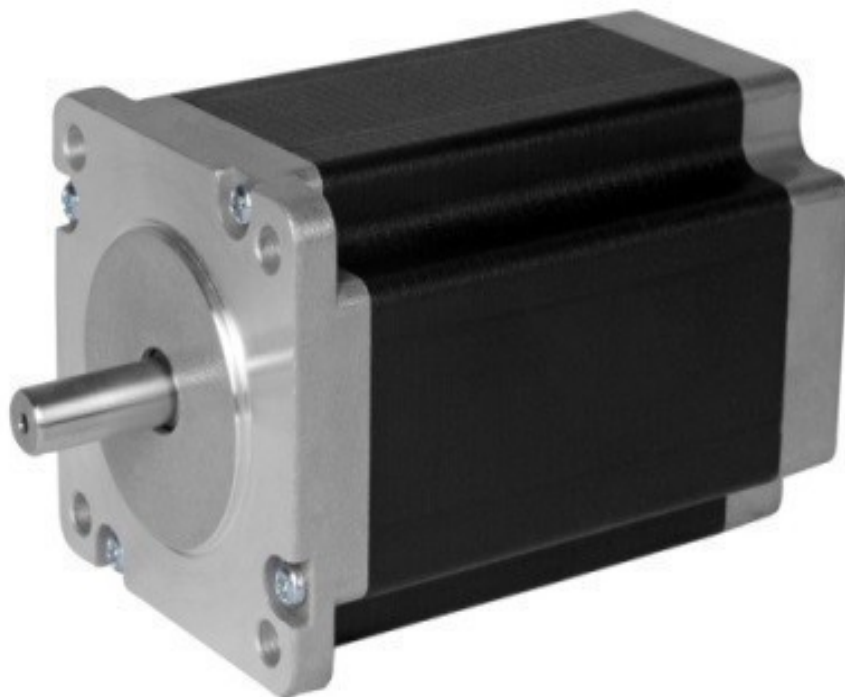
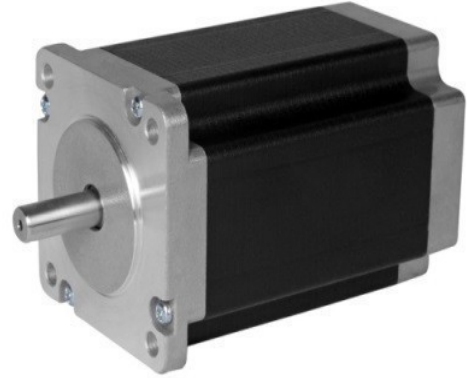


# 850-5345 Stepper Motor



800.909.4988  
info@rankinusa.com

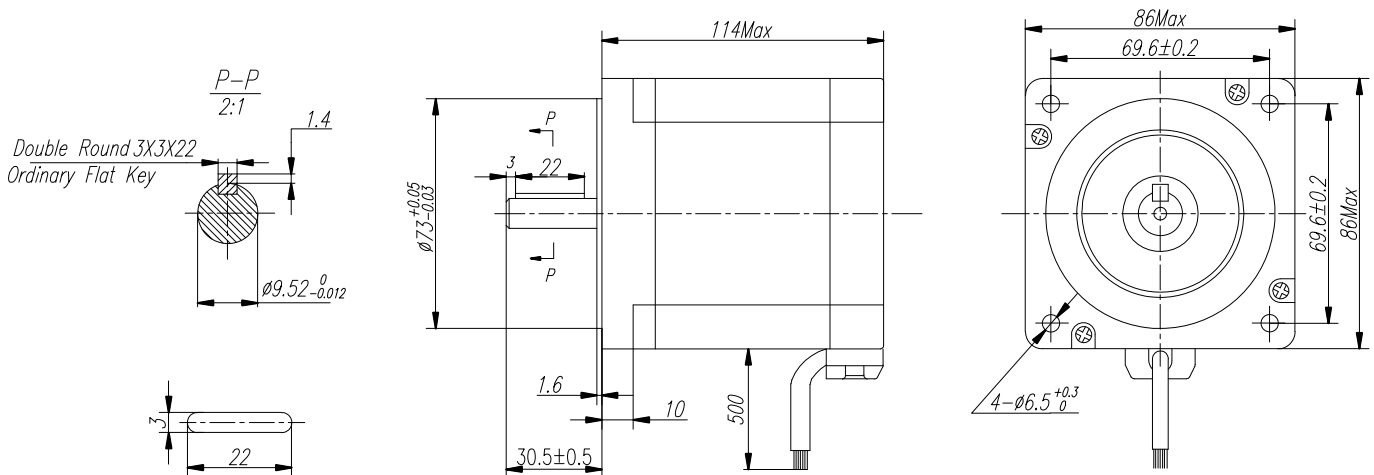
Step Angle	1.8°
Step Angle Accuracy	±5% (full step, no load)
Resistance Accuracy	±10%
Inductance Accuracy	±20%
Temperature Rise	80 °C Max.(rated current, 2 phase on)
Ambient Temperature	-20 °C ~ +50 °C
Insulation Resistance	100 MΩ Min., 500VDC
Dielectric Strength	820VAC, 1s, 3mA
Shaft Radial Play	0.02 Max. (450 g-load)
Shaft Axial Play	0.08 Max. (920 g-load)



### Specifications

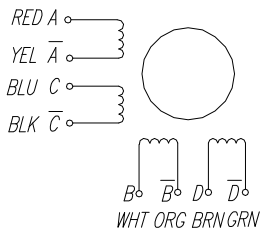
Model	Current	Resistance	Inductance	Holding Torque	Bi/Unipolar	Detent Torque	Rotor Inertia	Weight	Length
	A/∅	Ω/∅	mH/∅	N.cm	# of Leads	N.cm	g.cm <sup>2</sup>	kg	mm
SLP 3444 700 8AR00	7.0	0.4	3.2	820	Bi-P (8)	12.5	1800	4.0	114
	3.5	1.5	12.8	820	Bi-S (8)				
	5.0	0.75	3.2	580	Uni (8)				

### Mechanical Dimension

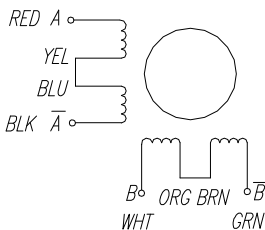


### Wiring Diagram

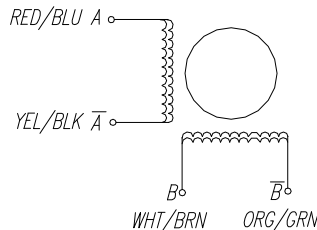
8 Leads



8 Leads (Bipolar-Series)



8 Leads (Bipolar-Parallel)



8 Leads (Unipolar)

