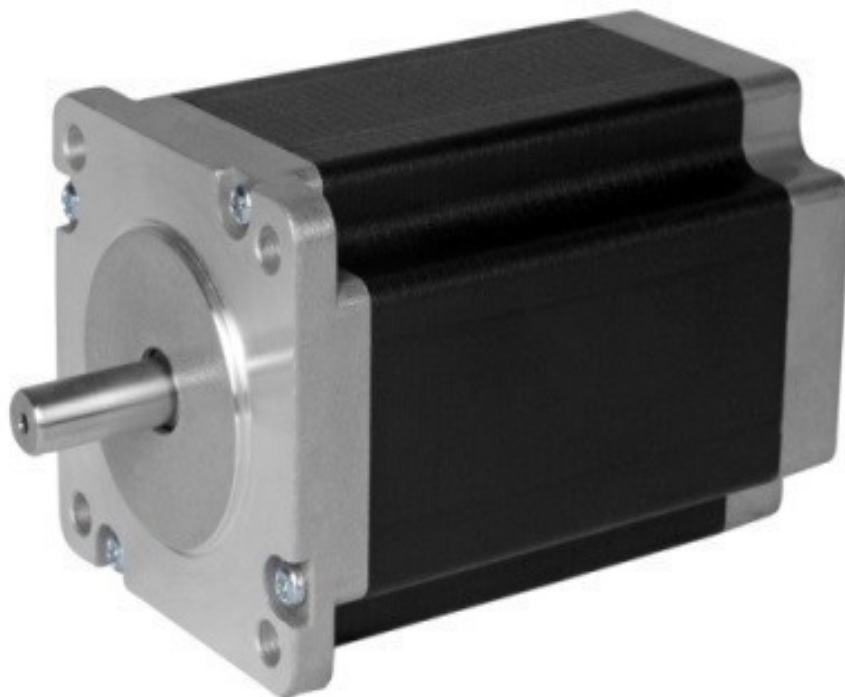
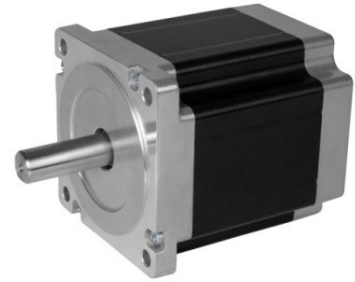


850-5355 Stepper Motor

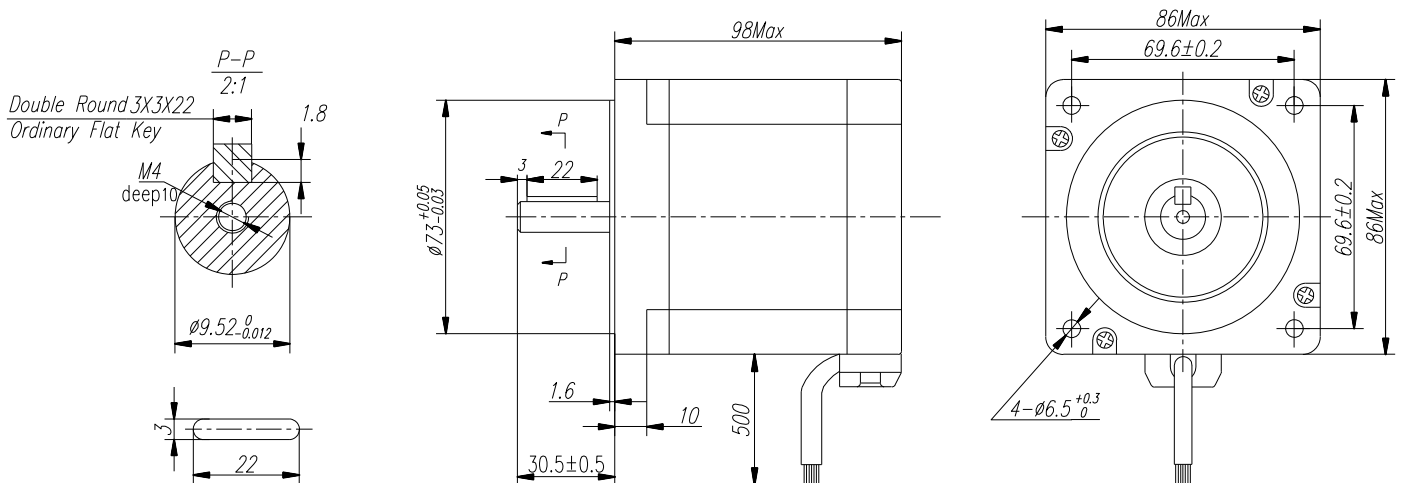


800.909.4988
info@rankinusa.com

Step Angle	1.8°
Step Angle Accuracy	±5% (full step, no load)
Resistance Accuracy	±10%
Inductance Accuracy	±20%
Temperature Rise	80 °C Max.(rated current, 2 phase on)
Ambient Temperature	-20 °C ~ +50 °C
Insulation Resistance	100 MΩ Min., 500VDC
Dielectric Strength	820VAC, 1s, 3mA
Shaft Radial Play	0.02 Max. (450 g-load)
Shaft Axial Play	0.08 Max. (920 g-load)


Specifications

Model	Current	Resistance	Inductance	Holding Torque	Bi/Unipolar	Detent Torque	Rotor Inertia	Weight	Length
	A/∅	Ω/∅	mH/∅	N.cm	# of Leads	N.cm	Kg.cm ²	kg	mm
SLP3438 700 8AR00	7.0	0.32	2.4	650	Bi-P (8)	9.5	1.55	3.0	98
	3.5	1.3	9.6	650	Bi-S (8)				
	5.0	0.65	2.4	490	Uni (8)				

Mechanical Dimension

Wiring Diagram
