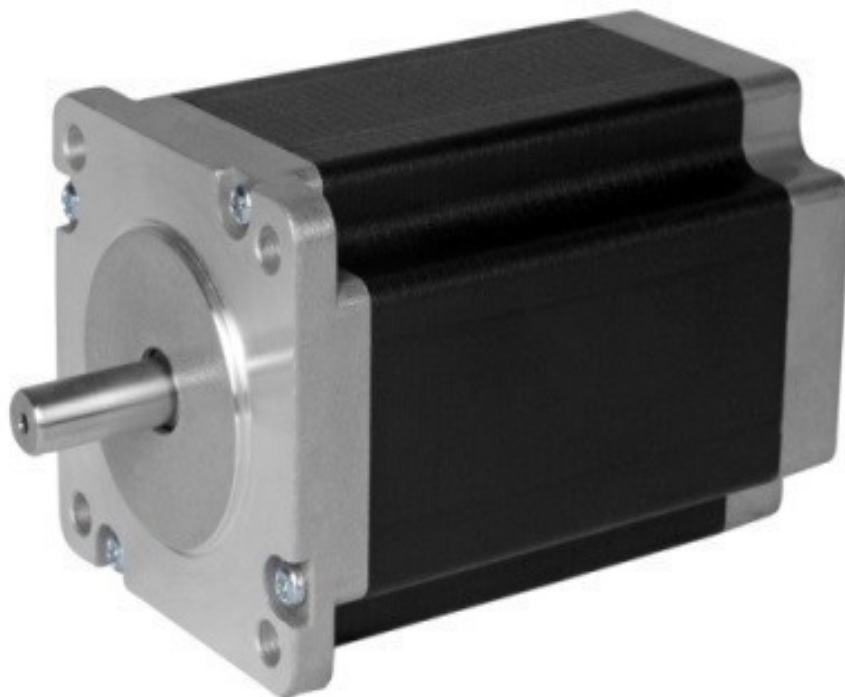


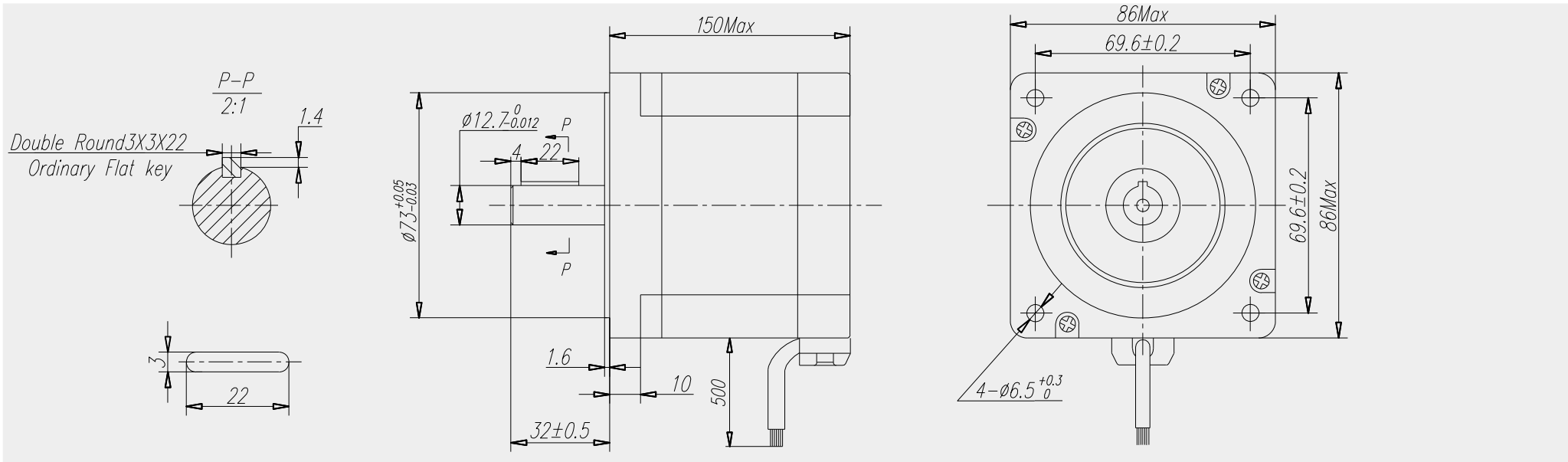
850-5359 Stepper Motor



800.909.4988
info@rankinusa.com

850-5359 SLP3459 700 8AT00

Mechanical Dimension



MODEL	SLP3459 700 8AT00		
No. of Phase	2	Roror inertia [g*cm ²]	2500
Step Angle [°]	1.8	Insulation Resist [Mohm]	100 1min
Voltage [V/Φ]		Dielectrin strenght [Vac]	820 1sec
Current [A/Φ]	7	Temperature rise [°C]	80
Resistance ± 10% [Ω/Φ]	0.45	Ambient temperature [°C]	-20/+50
Holding Torque [Nm]	1.2	Ambient umidity [RH]	
Inductance ± 20% [mH/Phase]	5.2	Protection class	
Insulation Class		Weight [Kg]	5
Lead Style			
Detent Torque [Nm]	0.245		

Wiring Diagram

