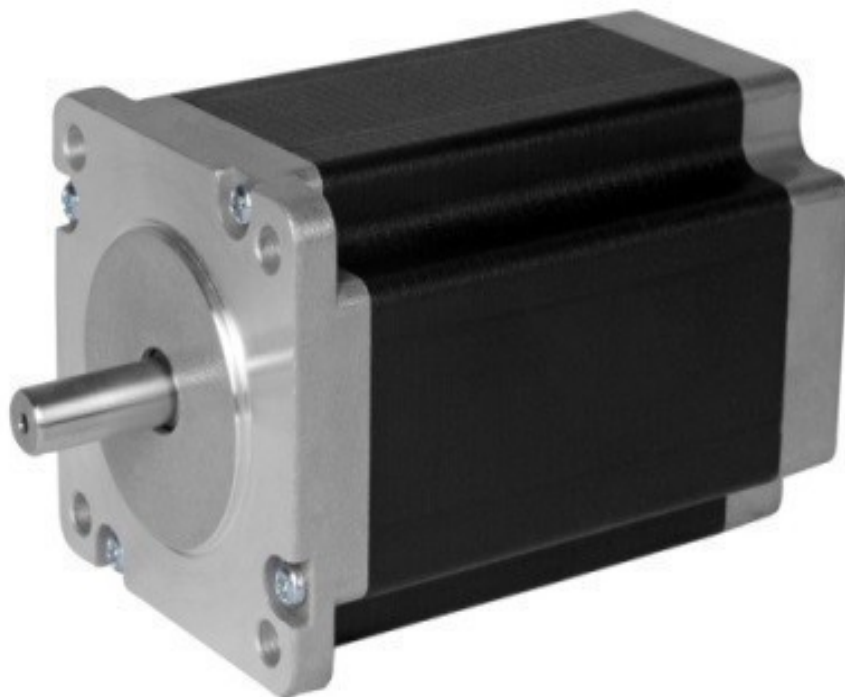
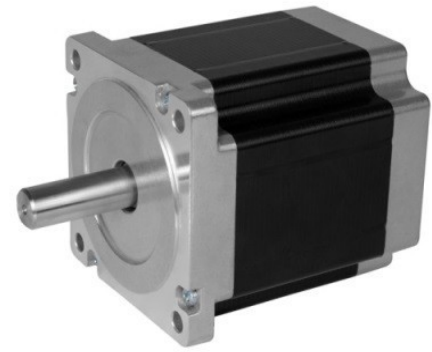


# 850-5365 Stepper Motor



800.909.4988  
info@rankinusa.com

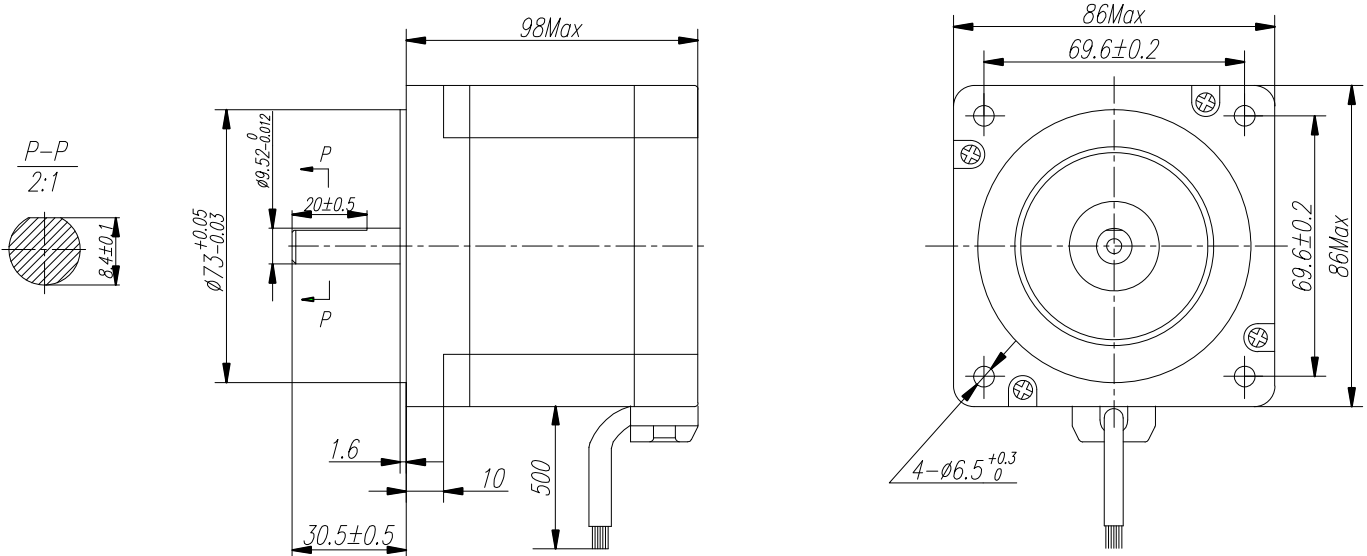
Step Angle	1.8°
Step Angle Accuracy	±5% (full step, no load)
Resistance Accuracy	±10%
Inductance Accuracy	±20%
Temperature Rise	80 °C Max.(rated current, 2 phase on)
Ambient Temperature	-20 °C ~ +50 °C
Insulation Resistance	100 MΩ Min., 500VDC
Dielectric Strength	820VAC, 1s, 3mA
Shaft Radial Play	0.02 Max. (450 g-load)
Shaft Axial Play	0.08 Max. (920 g-load)



### Specifications

Model	Current	Resistance	Inductance	Holding Torque	Bi/Unipolar	Detent Torque	Rotor Inertia	Weight	Length
	A/∅	Ω/∅	mH/∅	N.cm	# of Leads	N.cm	g.cm <sup>2</sup>	kg	mm
SLP 3438 560 8AX00	5.6	0.5	4.1	650	Bi-P (8)	9.5	1550	3.0	98
	2.8	2.0	16.4	650	Bi-S (8)				
	4.0	1.0	4.1	490	Uni (8)				

### Mechanical Dimension



### Wiring Diagram

