

B135 Series Valves



800.909.4988
info@rankinusa.com

RANKIN 
COMPONENTS THAT AUTOMATE

DESCRIPTION

Solenoid valve 2 way direct acting poppet type.
 Bi-stable impulse drive.
 The bi-stable function is achieved by the use of a polarized permanent magnet energizing the coil with a DC current for at least 15ms in the reverse direction of the preceding impulse.



2

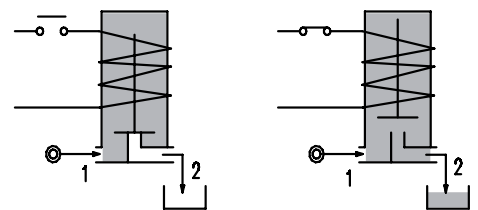
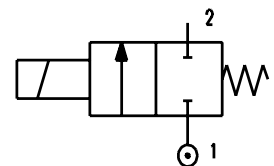
CONSTRUCTION

Body	Thermoplastic polymer ACS, KTW, W270, WRAS, NSF, FDA certified
Armature tube	Brass chemically nickel plated
Plunger and core	AISI 430FR
Springs	AISI 302
Seal material	NBR - FPM - EPDM

FEATURES

Maximum allowable pressure PS 30 bar^⑤
 Maximum fluid viscosity 25cSt (mm²/s)
 Ambient temperature: from -10°C to +80°C according to the coil
 Universal mounting position

OPTIONS: Stainless steel armature tube
 Type N connection without nut
 cRU[®] us certified coils



CONNECTION

K	N	P	W ^④	Y	Z
SPIGGOT	G1/8" male thread with NUT for flexible pipes	HOSETAIL for flexible pipes	COMPRESSION for flexible and semiflexible pipes	PUSH IN for semiflexible pipes Øext 6	PUSH IN for semiflexible pipes Øext 4



CODE ① ② ③	Connection ①	Orifice mm	Kv m ³ /h	Differential pressure bar		DC	Coil		Seal ②	Temp. range **
				Min	Max		Series	Width		
DB135... ..15///...	K-N-P-W-Y-Z	1.5	0.06	0	16	6.5	3	22	NBR=B	-10 +90
DB135... ..20///...	K-N-P-W-Y-Z	2.0	0.09	0	10					
DB135... ..25///...	K-N-P-W-Y-Z	2.2	0.14	0	5.5					
DB135... ..30///...	K-N-P-Y	2.5	0.19	0	2.5					
DB135... ..15///...	K-N-P-W-Y-Z	1.5	0.06	0	15	4.7	3	22	EPDM=E	-10 +140
DB135... ..20///...	K-N-P-W-Y-Z	2.0	0.09	0	9					
DB135... ..25///...	K-N-P-W-Y-Z	2.2	0.14	0	4					
DB135... ..30///...	K-N-P-Y	2.5	0.19	0	2					
									FPM=V	-10 +140

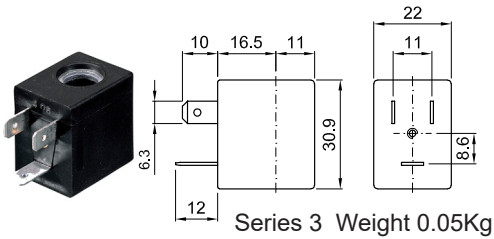
② Seal Example: DB135KB20///30B NBR seal SPIGGOT connection
 ③ Coil Coil 24V 50/60Hz
 ④ Only for connection "W" DB135W.../1/...

⑤ The maximum allowable pressure PS for steam is 2.5bar (gauge pressure)
 The maximum allowable pressure is related to the type of connection and pipe used

** The temperature range is related to the material of the seals (NBR, EPDM, FPM), and the valves' body.
 Please contact us concerning the temperature range referred to the different types of connection.

Series B135

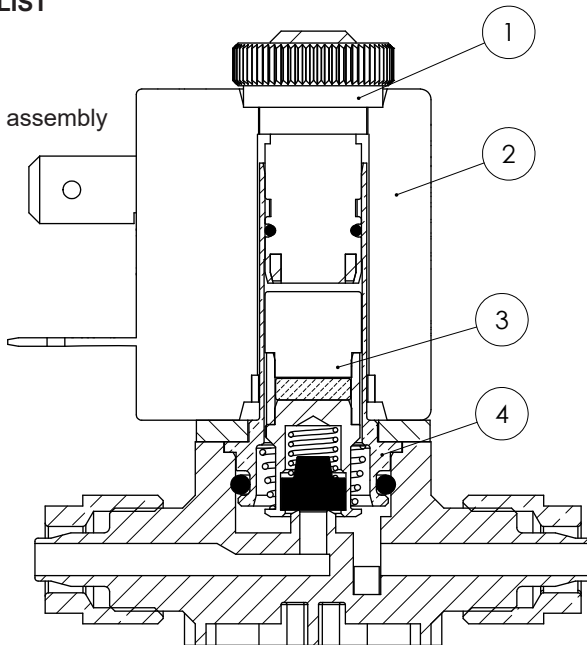
COILS ③	Direct Current (V)			Electrical connection	Connectors	DESCRIPTION Class F insulation Voltage tolerance AC +15% -10% DC ± 10% Protection class IP65 with connector fitted IP00 without connector Continuous service ED100%
	12	24	48			
Series 3 6.5W Width 0.86	U350 	U351 	302	DIN 46244	PG9 code 10348000	OPTIONS Class H insulation Cable attached Special coil voltage Special coil powers
Series 3 4.7W Width 0.86	300	301	-			



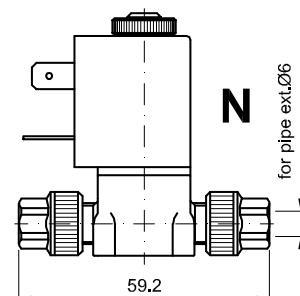
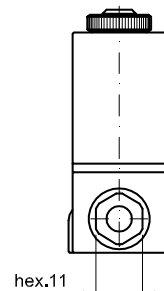
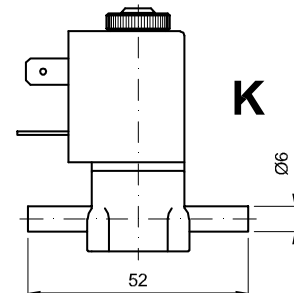
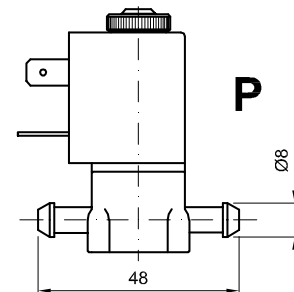
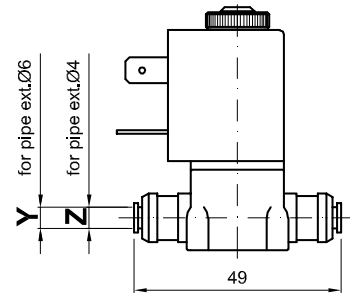
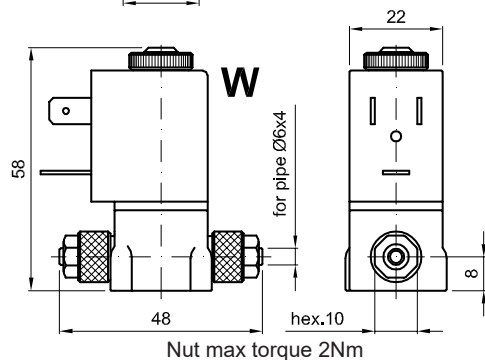
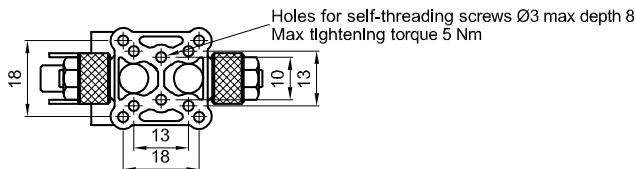
(for coil details see section 8)

SPARE PARTS LIST

1. Coil fixing nut
2. Coil
3. Plunger
4. Armature tube assembly



Weight with coil series 3=22lb (0.10Kg)



Screw the nut with wrench 11 up to the sliding on the hexagon (torque limiting device)