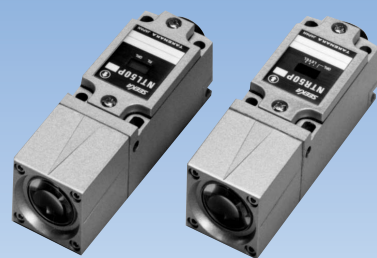


NT⁵⁰/₁₀₀(P) series

Simplified CMD

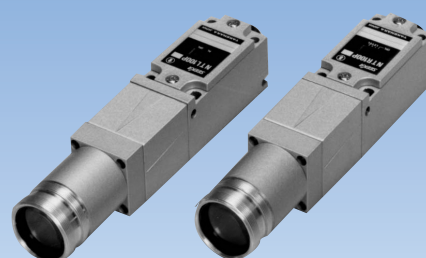
CE High powered light transmission capable of withstanding adverse environmental conditions. Optional parts available for a wide range of applications

Detecting distance: 50 m



Model NT50
Model NT50P

Detecting distance: 100 m



Model NT100
Model NT100P

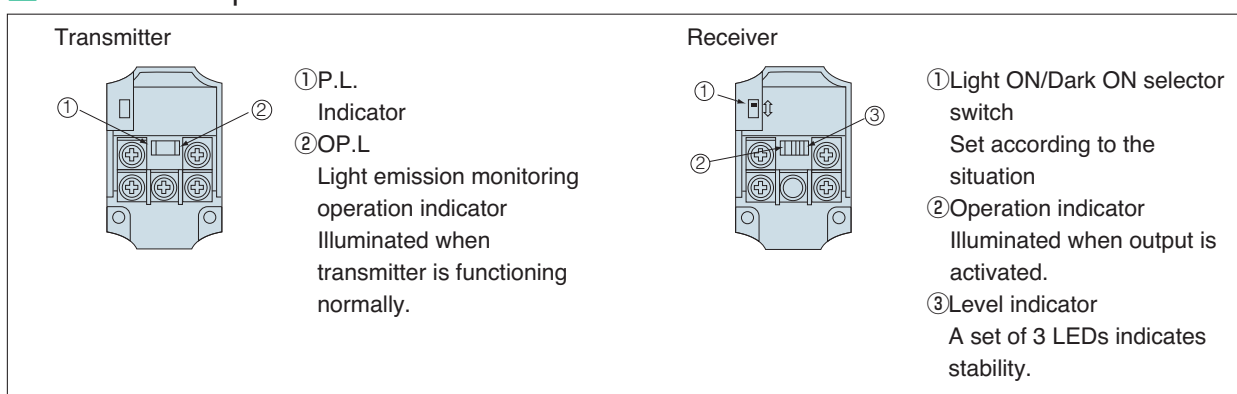
For Steel & Heavy industries

The NT50/100(P) Series sensors are high powered CMDs designed to withstand severe operating environment (water, dust, etc.).

Features

- Smallest size of long distance sensors
- 3-point level indicator with margin for reliable detection
The green LED is illuminated at a level 8 times as much as the operation level but the inherent performance of the emission is over tenfold.
- DIN compatible robust Zinc die cast case
- Integrated light emission monitor circuit in transmitter
Alarm signal generates output if light emission stops in the unlikely event of failure.
- Operation mode selectable
Operation mode is selectable between Light ON and Dark ON with the switch provided.

Panel Description



Rating/Performance/ Specification/ Environmental Specification

Models	Set	NT50	NT100	NT50P	NT100P	
	Transmitter	NTL50	NTL100	NTL50P	NTL100P	
	Receiver	NTR50	NTR100	NTR50P	NTR100P	
Detection method	Through beam					
Detecting distance	50m	100m	50m	100m		
Detecting object	ø22mm or more	ø28mm or more	ø22mm or more	ø28mm or more		
Power Supply	12-24VDC ±10% Ripple 10% or less			100 - 240VAC ±10% 50/60Hz		
Current consumption / Power consumption	Transmitter: 30mA or less / Receiver: 35mA or less			Transmitter: 5W or less / Receiver: 5W or less		
Output mode	NPN open collector output Rating: Sink current 200mA (30VDC) or less			Relay output 1c Rating: 250VAC 2A or less (resistive load)		
Operation mode	Light ON/Dark ON (selectable with switch)					
Light monitor	NPN open collector output Rating: sink current 200mA (30VDC) or less			Relay contact output 1c Rating: 250V AC 2A or less (resistive load)		
	Power supply					
	Lighting					
	Light emission monitor output					
Alarm output*1	NPN open collector output Rating: Sink current 200mA (30VDC) or less					
Response time	5ms or less			20ms or less		
Light source	Infrared LED (wave length 910nm)					
Indicator	(Transmitter) P.L: Power indicator (green LED) ... Illuminated when power on OP.L: Monitor indicator (red LED) ... Illuminated when emit light normally (Receiver) OP.L: Operation indicator (red LED) ... Illuminated when output on LEVEL: Level indicator (three level display) LEVEL1: yellow LED illuminated when light intensity of about twice as much as operation level is detected. LEVEL2: yellow LED illuminated when light intensity of about four times as much as operation level is detected. LEVEL3: green LED illuminated when light intensity of about eight times as much as operation level is detected.					
Switch (SW)	Light ON/Dark ON selector switch provided (Remove the case lid of the receiver to access the switch.) Light ON ... Output at light receiving Dark ON ... Output at light blocking					
Materials	Case: Zinc die cast					
Connection	Terminal block (screw: M3.5, width: 8.1mm)					
Weight	Transmitter: Approx. 700g Receiver: Approx. 700g	Transmitter: Approx. 800g Receiver: Approx. 800g	Transmitter: Approx. 700g Receiver: Approx. 700g	Transmitter: Approx. 800g Receiver: Approx. 800g		
Accessories	Operation manual, Mounting bracket					

*1 When the light intensity is LEVEL 1 or lower, the alarm is output (yellow LED turns off).

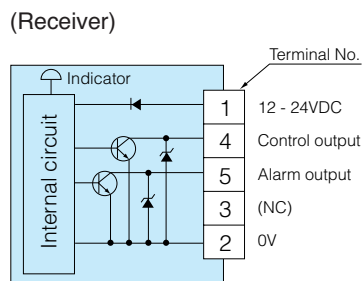
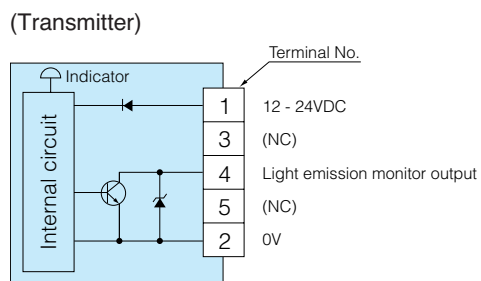
Environmental Specification

Ambient light (on light receiving surface)	50,000 lx or less (incandescent lamp)	50,000 lx or less (incandescent lamp) 100,000 lx or less (sunlight)
Ambient temperature	-25 - +55°C (Non-freezing)	
Storage temperature	-40 - +70°C (Non-condensing)	
Ambient humidity	35 - 85%RH (Non-condensing)	
Protective structure	IP66	
Vibration	10-55 Hz / 1.5 mm double amplitude / 2 hours each in 3 directions	
Shock	1000 m/s ² / 3 times each in 3 directions	500 m/s ² / 3 times each in 3 directions
Dielectric withstanding	500 VAC for 1 minute (between input/output and case)	2000 VAC for 1 minute (between input/output and case)
Insulation resistance	500 VDC, 20 MΩ or higher	

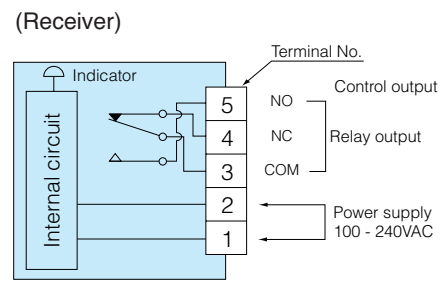
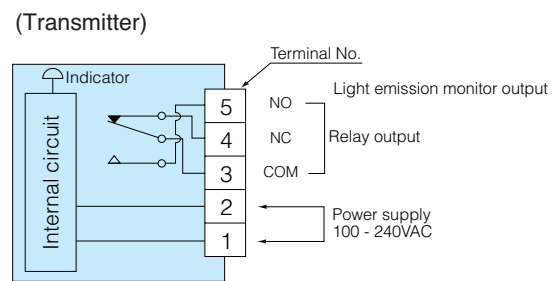
NT

Input/Output Circuit and Connection

NT50/NT100



NT50P/NT100P

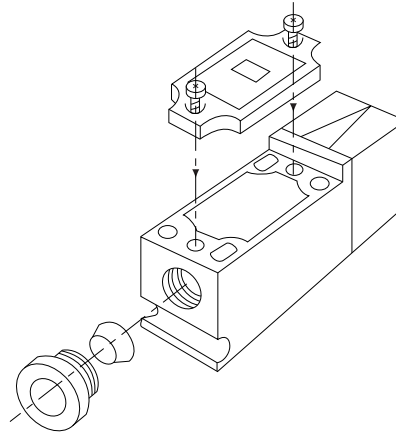


For Steel & Heavy industries

• Connection

For connection, use cables of 9 - 11 mm in diameter.

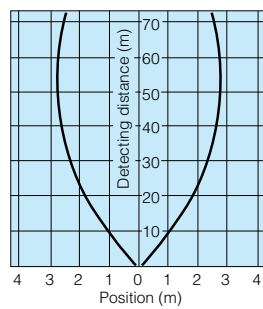
Loosen the screws on the lid of the body to remove the lid.



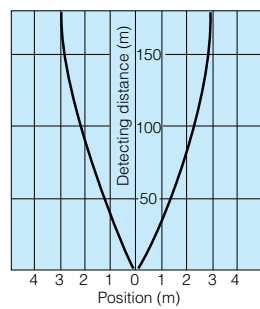
The rubber packing must be attached in the right orientation.

Response Curves: Beam Pattern (Typical)

NT50
NT50P

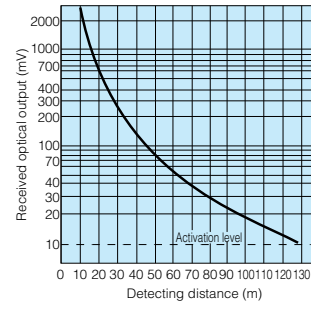


NT100
NT100P

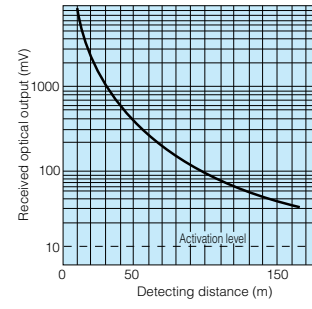


Excess Gain Curves (Typical)

NT50
NT50P




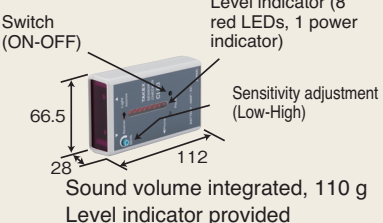
NT100
NT100P



Optional Parts

Checker CLR3 Used for aligning the light axis while observing the light emitted from the transmitter with "sound" and "level indicator." Find the light from the transmitter with the checker and adjust the orientation of the transmitter so that the receiver is installed at the center of the light. (Earphone, CLR3-CY is separately available)






Switch (ON-OFF)
Level indicator (8 red LEDs, 1 power indicator)
Sensitivity adjustment (Low-High)
Sound volume integrated, 110 g
Level indicator provided

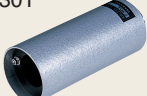
Hood (Applicable to NT50, NT50P)

Hood H301




Energy-saving airless dust hood taking advantage of muffler effect for preventing soiling of lens.

Airless hood F301




Air purge hood A301



Air purge hood for prevention of soiling of lens.

Pinhole plate (Applicable to NT50, NT50P)

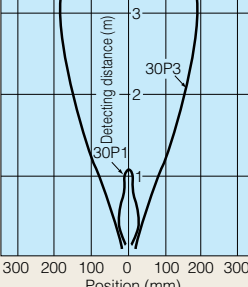
Use of pinhole plates reduces the smallest allowable detection object diameter and activation area. Note that the detecting distance is reduced as well.



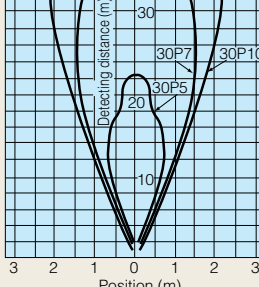
Model	Pinhole diameter (mm)	Detecting distance (m)
30P1	ø1	0.6
30P3	ø3	4
30P5	ø5	9
30P7	ø7	15
30P10	ø10	26

Response Curves: Beam Pattern (Typical)
NT50, NT50P: with pinhole plate (optional) attached to both transmitter and receiver

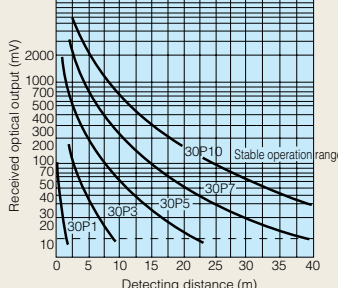
With 30P1/30P3 attached



With 30P5/30P7/30P10 attached



Excess Gain Curves (Typical)
NT50, NT50P: with pinhole plate (optional) attached to both transmitter and receiver

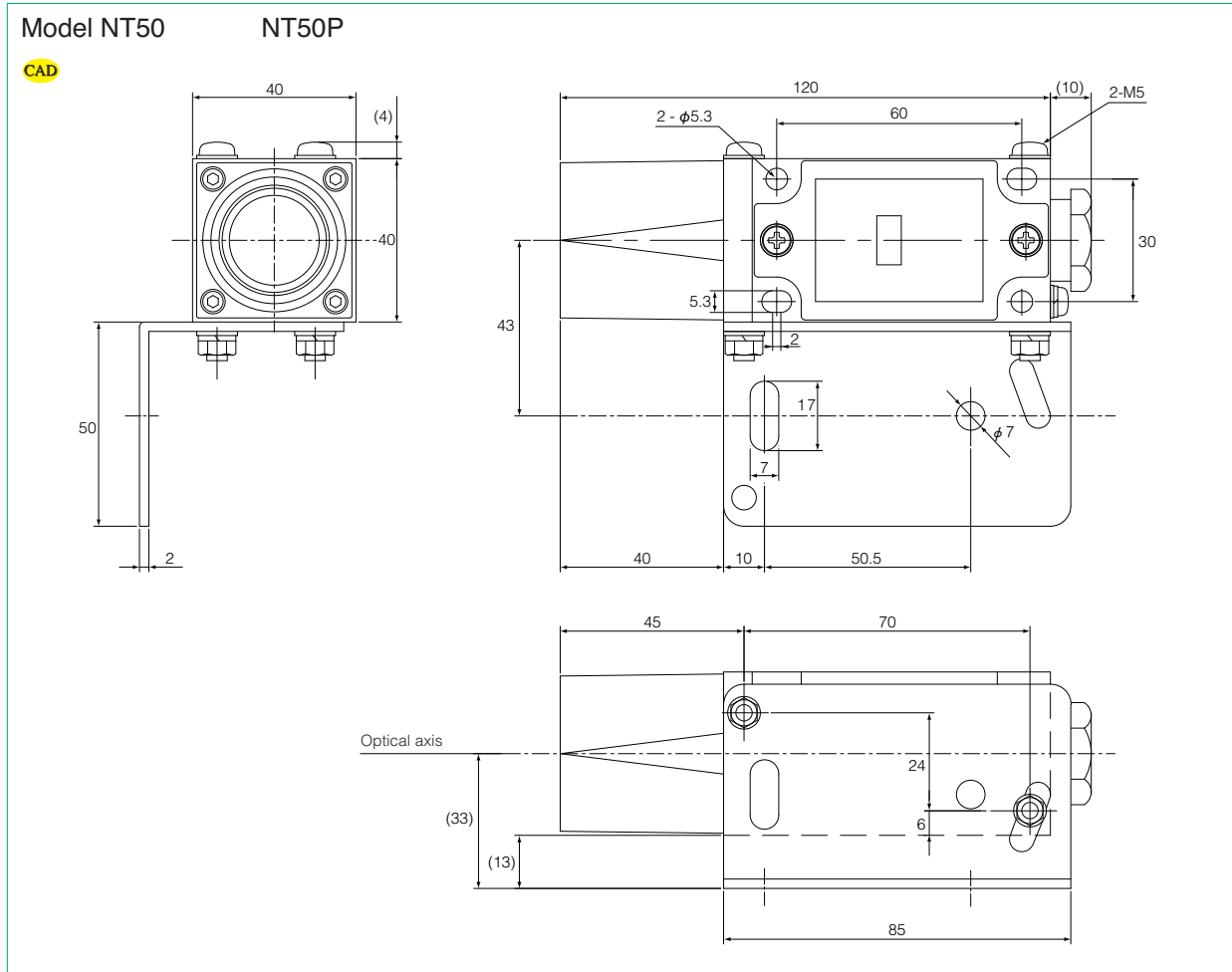


- Installation**
Prepare a solid platform to avoid vibration.
Fix the sensor on the mounting bracket with two M5 screws.
Fix the mounting bracket on the platform with an M6 screw.
(Prepare screws, nuts, washers, etc.)

For Steel & Heavy Industries

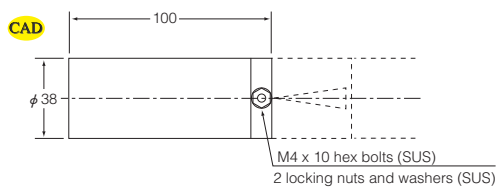
NT

Dimensions (in mm)

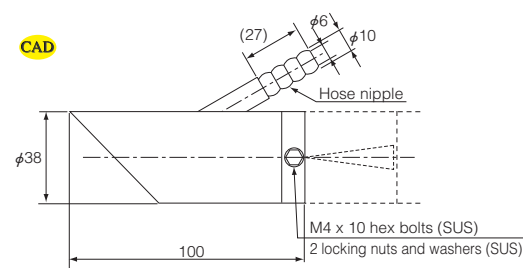


Hoods (optional)

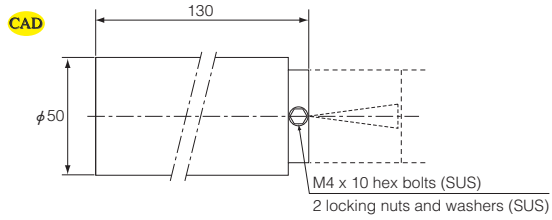
H301 (hood)



A301 (air purge hood)

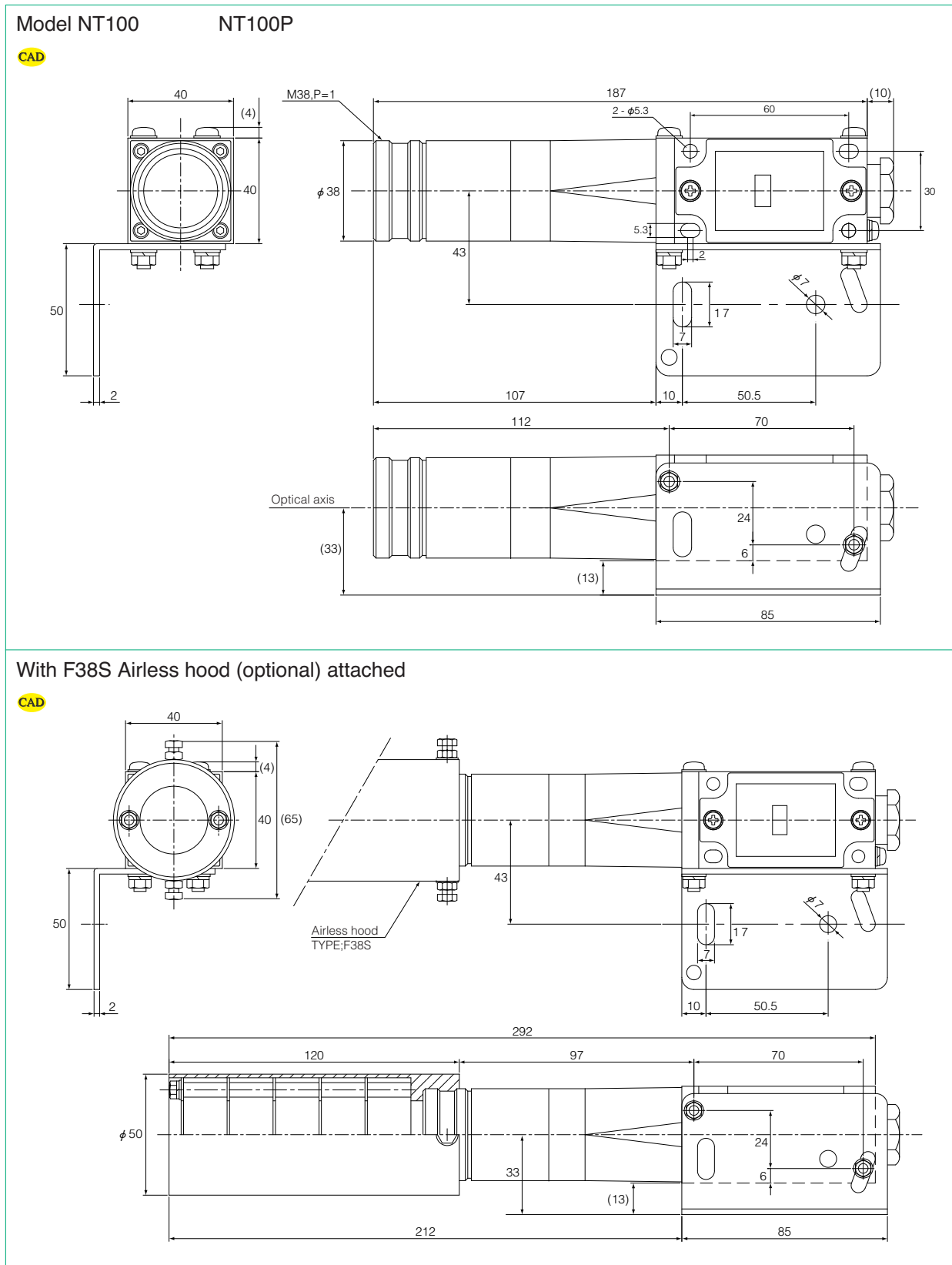


F301 (Airless hood)



Air purge specification
Flow rate···200L/min
Withstand pressure···1MPa

■ Dimensions (in mm)



For Steel & Heavy Industries