

# P152 Series Valves



800.909.4988  
info@rankinusa.com

**RANKIN**   
COMPONENTS THAT AUTOMATE

## DESCRIPTION

2 way proportional angle seat valve pneumatically operated

## PRESENTATION

- High flow rate due to the angle seat configuration
- Anti-water hammer feature with the fluid entry below the seat
- Stainless steel and corrosion resistance body
- Orientable pneumatic actuator
- Self adjusting internal seal
- Optical position indicator
- Back pressure resistance capability
- Maintenance free sealing pack
- Accurated flow control
- Universal mounting position

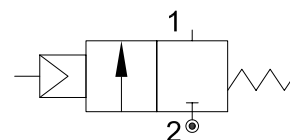


**USE:** Automation, heating, water, hot water, steam (356°F), aggressive and food fluid

**CONNECTION:** from 1/2 to 1 GAS or NPT

## VALVE FEATURES

|                     |                          |
|---------------------|--------------------------|
| Fluid temperature   | 14°F +356°F              |
| Ambient temperature | 14°F +140°F              |
| Fluid viscosity     | max 600 cSt              |
| Body material       | Stainless steel AISI 316 |
| Seal                | PTFE                     |
| Packing gland       | PTFE/FPM                 |



**5**

## PILOT ACTUATOR FEATURES

|                   |   |
|-------------------|---|
| Fluid             | Dry or lubricated air, gases and neutral fluids |
| Fluid temperature | max +140°F                                      |
| Body material     | Stainless steel AISI 316                        |
| Gaskets           | NBR   |
| Actuator          | Ø2 in (Ø50mm)                                   |

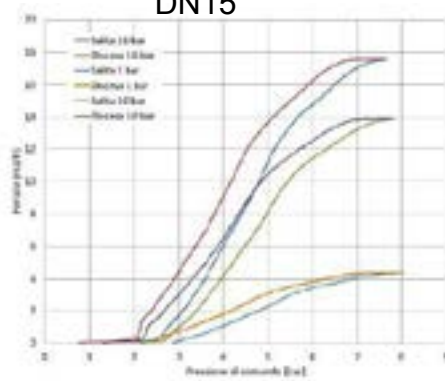
| CODE<br>①     | Port Size | Orifice Size |      | Flow Factor Cv<br>(gpm) | Actuator pilot pressure |           |           |           | Operating Pressure Differential (M.O.P.D.) |           |           |           | Max allowable pressure PS |       | Weight |      |
|---------------|-----------|--------------|------|-------------------------|-------------------------|-----------|-----------|-----------|--|-----------|-----------|-----------|---------------------------|-------|--------|------|
|               |           | (in)         | (mm) |                         | Min (psi)               | Max (bar) | Min (psi) | Max (bar) | Min (psi)                                  | Max (bar) | Max (psi) | Max (bar) | (psi)                     | (bar) | (lb)   | (Kg) |
| P152D...W15/V | 1/2       | 0.59         | 15   | 4.9                     |                         |           |           |           |  |           | 232       | 16        |                           |       | 3.5    | 1.6  |
| P152E...W20/V | 3/4       | 0.78         | 20   | 7.6                     | 0                       | 0         | 116       | 8         | 0  | 0         | 145       | 10        | 580                       | 40    | 3.75   | 1.7  |
| P152F...W25/V | 1         | 1            | 25   | 9                       |                         |           |           |           |  |           | 145       | 10        |                           |       | 4.6    | 2.1  |

① G= GAS (ISO228)  
N= NPT (ANSI/ASME B1.20.1)

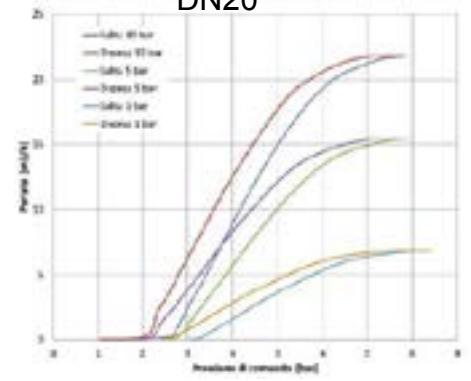
Ordination example: P152DNW15/V connection 1/2 NPT

Flow factor - Fluid +20°C

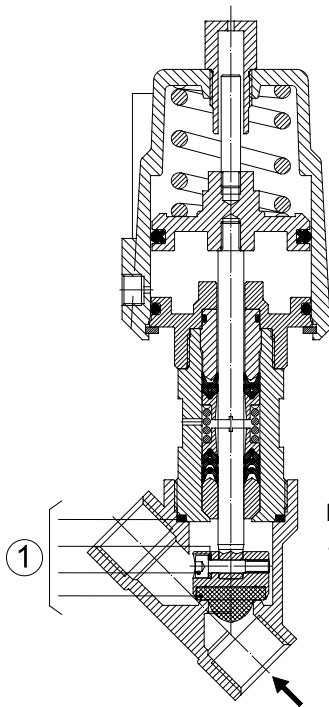
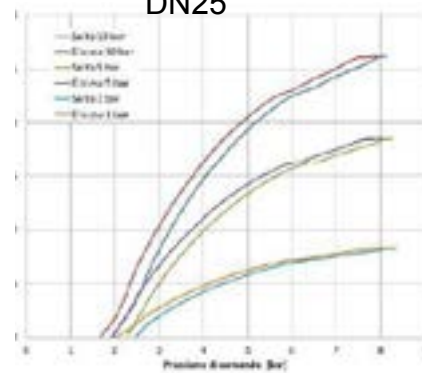
DN15



DN20



DN25



### MAINTENANCE KIT

- 1. 1/2 R500078
- 3/4 R500081
- 1 R500084

### OVERALL DIMENSION

| CONNECTION<br>GAS or NPT | A    |       | B         |       | C    |     | D    |      | H   |       | L    |    | T    |      |
|--------------------------|------|-------|-----------|-------|------|-----|------|------|-----|-------|------|----|------|------|
|                          | in   | mm    | in        | mm    | in   | mm  | in   | mm   | in  | mm    | in   | mm | in   | mm   |
| 1/2                      | 7.5  | 190.6 | SW 1-1/16 | SW 27 | 6.14 | 156 | 0.60 | 15.4 | 5.5 | 139.7 | 2.56 | 65 | 0.67 | 17   |
| 3/4                      | 7.51 | 190.8 | SW 1-1/4  | SW 32 | 6.38 | 162 | 0.84 | 21.4 | 5.5 | 139.8 | 2.95 | 75 | 0.75 | 19   |
| 1                        | 7.89 | 200.3 | SW 1-5/8  | SW 41 | 6.61 | 168 | 0.98 | 25   | 5.8 | 146.6 | 3.54 | 90 | 0.81 | 20.5 |

