

P171 Series Valves



800.909.4988
info@rankinusa.com

RANKIN 
COMPONENTS THAT AUTOMATE

DESCRIPTION

2 way normally closed angle seat valve pneumatically operated for high pressure

PRESENTATION

- High flow rate due to the angle seat configuration
- Anti-water hammer feature with the fluid entry below the seat
- Stainless steel and corrosion resistance body
- Orientable pneumatic actuator
- Self adjusting internal seal
- Optical position indicator
- Back pressure resistance capability
- Maintenance free sealing pack
- Universal mounting position

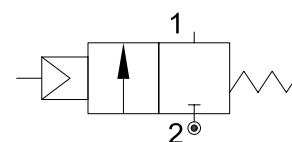


USE: Automation, heating, water, hot water, steam (356°F), aggressive and food fluid

CONNECTION: from 1/2 to 2 GAS o NPT

VALVE FEATURES

Fluid temperature	14°F +356°F
Ambient temperature	14°F +140°F
Fluid viscosity	max 600 cSt
Body material	Stainless steel AISI 316
Seal	PTFE
Packing gland	PTFE/FPM



5

PILOT ACTUATOR FEATURES

Fluid	Dry or lubricated air, gases and neutral fluids
Fluid temperature	max +140°F
Body material	Polyamide 66 with 30% glass fibre
Gaskets	NBR
Actuator	Ø2.76in (Ø70mm)

CODE ①	Port Size	Orifice Size		Flow Factor Cv (gpm)	Actuator pilot pressure				Operating Pressure Differential (M.O.P.D.)				Max allowable pressure PS		Weight	
		(in)	(mm)		Min (psi)	Max (psi)	Min (bar)	Max (bar)	Min (psi)	Max (psi)	Min (bar)	Max (bar)	(psi)	(bar)	(lb)	(Kg)
P171D...W15/V	1/2	0.59	15	5.5	72.5	5	145	10	0	0	507	35	580	40	3.1	1.4
P171E...W20/V	3/4	0.78	20	10.4							362	25			3.3	1.5
P171F...W25/V	1	1	25	13.2							290	20			4	1.8
P171G...W32/V	1 1/4	1.26	32	23.5							188	13	5.3	2.4		
P171H...W40/V	1 1/2	1.57	40	29.8							116	8	6	2.7		
P171I...W50/V	2	1.97	50	43							79	5.5	8.6	3.9		

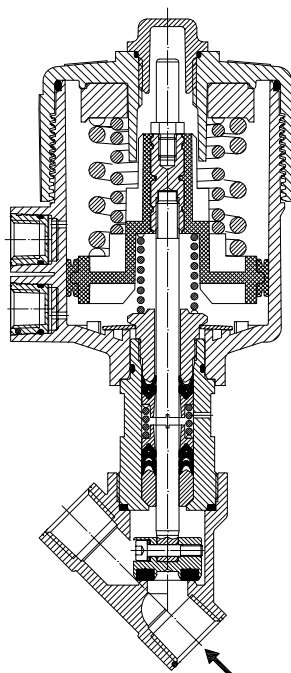
① G= GAS (ISO228)
N= NPT (ANSI/ASME B1.20.1)

Ordination example: P171FNW25/V connection 1 NPT



CE Approval

(Pressure equipment directive 97/23/CE)
for valves P171G_W32 - P171H_W40 - P171I_W50



OVERALL DIMENSION

CONNECTION GAS or NPT	A		B		C		D		H		L		T	
	in	mm	in	mm	in	mm	in	mm	in	mm	in	mm	in	mm
1/2	8.14	206.8	SW 1-1/16	SW 27	7	178.7	0.61	15.4	6.43	163.3	2.56	65	0.67	17
3/4	8.33	211.7	SW 1-1/4	SW 32	7.4	188.6	0.86	21.9	6.56	166.7	2.97	75.5	0.75	19
1	8.66	220.1	SW 1-5/8	SW 41	7.8	197.8	0.99	25.1	6.8	172.7	3.54	90	0.83	21
1 1/4	9.29	235.9	SW 2	SW 50	8.4	212.3	1.12	28.5	7.24	183.8	4.33	110	0.95	24
1 1/2	9.41	238.9	SW 2-1/4	SW 55	8.5	217.0	1.22	31.0	7.32	186	4.8	122	1	25.2
2	9.76	247.8	SW 2-3/4	SW 70	9	229.7	1.48	37.5	7.57	192.2	5.95	151	1.12	28.5

