

P172 Series Valves



800.909.4988
info@rankinusa.com

RANKIN 
COMPONENTS THAT AUTOMATE

DESCRIPTION

2 way proportional angle seat valve pneumatically operated

PRESENTATION

- High flow rate due to the angle seat configuration
- Anti-water hammer feature with the fluid entry below the seat
- Stainless steel and corrosion resistance body
- Orientable pneumatic actuator
- Self adjusting internal seal
- Optical position indicator
- Back pressure resistance capability
- Maintenance free sealing pack
- Accurate flow control
- Universal mounting position

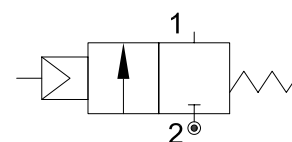


USE: Automation, heating, water, hot water, steam (180°C), aggressive and food fluid

CONNECTION: from 1/2" to 2" GAS o NPT

VALVE FEATURES

Fluid temperature	-40°C +180°C
Ambient temperature	-10°C +80°C
Fluid viscosity	max 600 cSt
Body material	Stainless steel AISI 316
Seal	PTFE
Packing gland	PTFE/FKM



5

PILOT ACTUATOR FEATURES

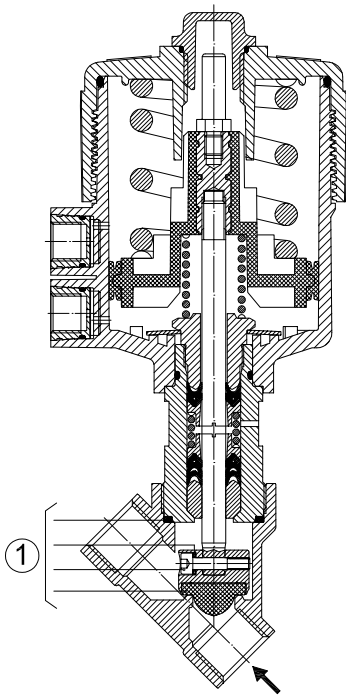
Fluid	Dry or lubricated air, gases and neutral fluids
Fluid temperatures	max +60°C
Body material	Polyamide 66 with 30% glass fibre
Gaskets	NBR
Actuator	Ø70

CODE ①	Connection GAS - NPT	Orifice mm	Kv l/min	Actuator pilot pressure (bar)		Differential pressure MOPD (bar)		Max allowable pressure PS (bar)	Weight Kg
				min	max	min	max		
P172D...W15/V	1/2"	15	70	0	10	0	16	40	1.4
P172E...W20/V	3/4"	20	130				10		1.5
P172F...W25/V	1"	25	150				10		1.8

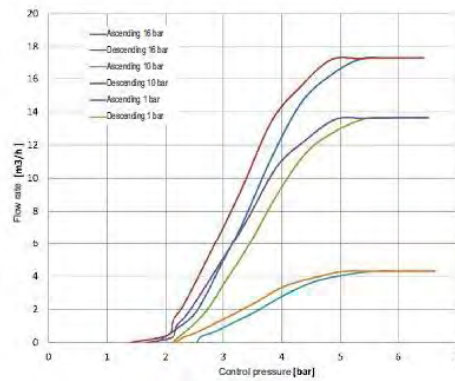
① G= GAS (ISO228/1)
N= NPT (ANSI/ASME B1.20.1)

Ordination example: P172ENW20/V connection 3/4" NPT

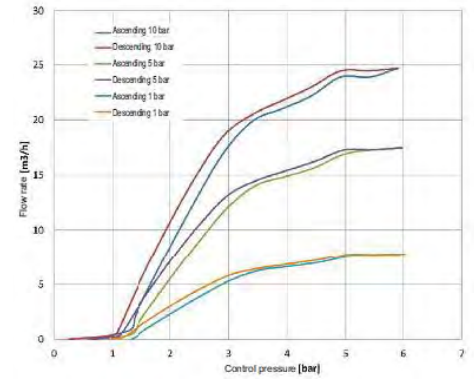
Flow factor - Fluid +20°C



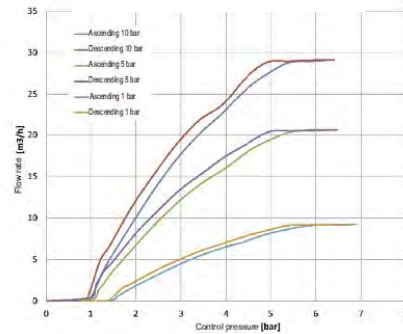
DN15



DN20



DN25



MAINTENANCE KIT

- 1. 1/2" R500078
- 3/4" R500081
- 1" R500084

OVERALL DIMENSION

CONNECTION GAS or NPT	A mm	B mm	C mm	D mm	H mm	L mm	T mm
1/2"	206.8	SW 27	178.7	15.4	163.3	65	17
3/4"	211.7	SW 32	188.6	21.9	166.7	75.5	19
1"	220.1	SW 41	197.8	25.1	172.7	90	21

