

# P172 Series Valves



800.909.4988  
info@rankinusa.com

**RANKIN**   
COMPONENTS THAT AUTOMATE

## DESCRIPTION

2 way proportional angle seat valve pneumatically operated

## PRESENTATION

- High flow rate due to the angle seat configuration
- Anti-water hammer feature with the fluid entry below the seat
- Stainless steel and corrosion resistance body
- Orientable pneumatic actuator
- Self adjusting internal seal
- Optical position indicator
- Back pressure resistance capability
- Maintenance free sealing pack
- Accurate flow control
- Universal mounting position

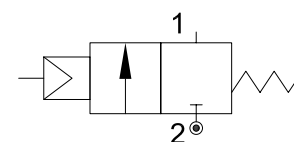


**USE:** Automation, heating, water, hot water, steam (356°F), aggressive and food fluid

**CONNECTION:** from 1/2 to 2 GAS o NPT

## VALVE FEATURES

Fluid temperature	14°F +356°F
Ambient temperature	14°F +140°F
Fluid viscosity	max 600 cSt
Body material	Stainless steel AISI 316
Seal	PTFE
Packing gland	PTFE/FPM



**5**

## PILOT ACTUATOR FEATURES

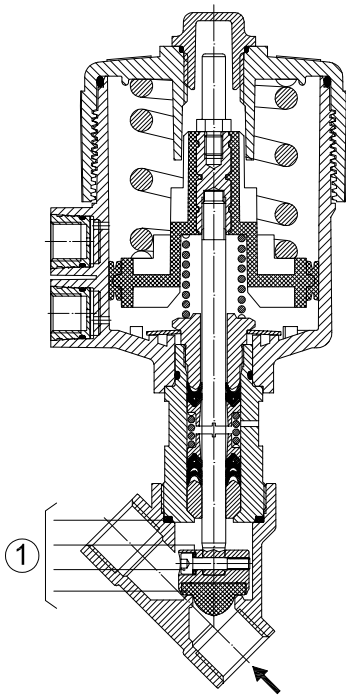
Fluid	Dry or lubricated air, gases and neutral fluids
Fluid temperature	max +140°F
Body material	Polyamide 66 with 30% glass fibre
Gaskets	NBR
Actuator	Ø2.76in (Ø70mm)

CODE ①	Port Size	Orifice Size		Flow Factor Cv (gpm)	Actuator pilot pressure				Operating Pressure Differential (M.O.P.D.)				Max allowable pressure PS		Weight	
		(in)	(mm)		Min (psi)	Max (psi)	Min (bar)	Max (bar)	Min (psi)	Max (psi)	Min (bar)	Max (bar)	(psi)	(bar)	(lb)	(Kg)
P172D...W15/V	1/2	0.59	15	4.9							232	16			3.1	1.4
P172E...W20/V	3/4	0.78	20	9	0	0	145	10	0	0	145	10	580	40	3.3	1.5
P172F...W25/V	1	1	25	10.4							145	10			4	1.8

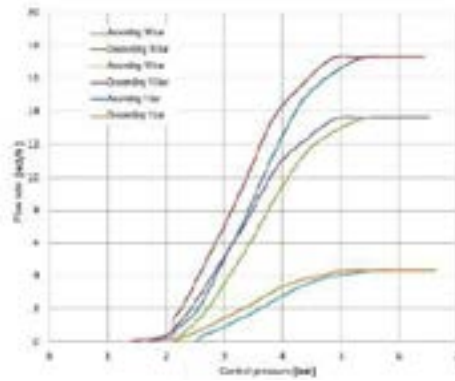
① G= GAS (ISO228)  
N= NPT (ANSI/ASME B1.20.1)

Ordination example: P172ENW20/V connection 3/4" NPT

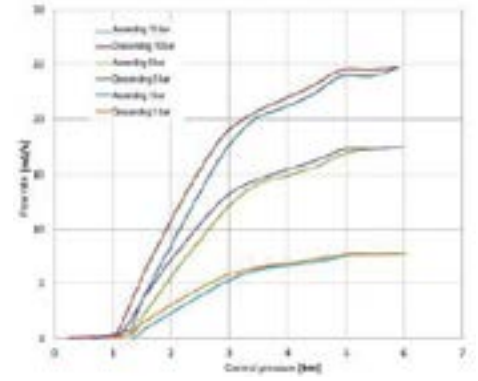
Flow factor - Fluid +20°C



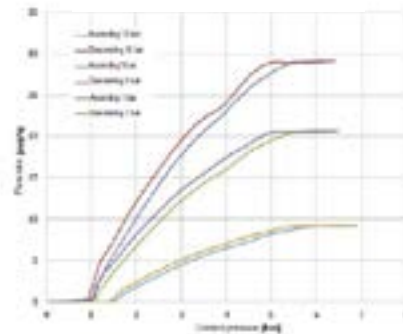
DN15



DN20



DN25



**MAINTENANCE KIT**

- 1. 1/2 R500078
- 3/4 R500081
- 1 R500084

**OVERALL DIMENSION**

CONNECTION GAS or NPT	A		B		C		D		H		L		T	
	in	mm	in	mm	in	mm	in	mm	in	mm	in	mm	in	mm
1/2	8.14	206.8	SW 1-1/16	SW 27	7	178.7	0.61	15.4	6.43	163.3	2.56	65	0.67	17
3/4	8.33	211.7	SW 1-1/4	SW 32	7.4	188.6	0.86	21.9	6.56	166.7	2.97	75.5	0.75	19
1	8.66	220.1	SW 1-5/8	SW 41	7.8	197.8	0.99	25.1	6.8	172.7	3.54	90	0.83	21

