

P270 Series Valves



800.909.4988
info@rankinusa.com

RANKIN 
COMPONENTS THAT AUTOMATE

DESCRIPTION

2 way normally open angle seat valve pneumatically operated

PRESENTATION

- High flow rate due to the angle seat configuration
- Anti-water hammer feature with the fluid entry below the seat
- Stainless steel and corrosion resistance body
- Orientable pneumatic actuator
- Self adjusting internal seal
- Optical position indicator
- Back pressure resistance capability
- Maintenance free sealing pack
- Universal mounting position

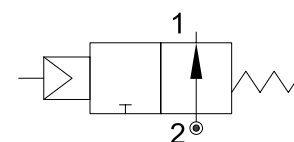


USE: Automation, heating, water, hot water, steam (356°F), aggressive and food fluid

CONNECTION: from 1/2" to 2" GAS o NPT

VALVE FEATURES

Fluid temperature	14°F +356°F
Ambient temperature	14°F +140°F
Fluid viscosity	max 600 cSt
Body material	Stainless steel AISI 316
Seal	PTFE
Packing gland	PTFE/FPM



5

PILOT ACTUATOR FEATURES

Fluid	Dry or lubricated air, gases and neutral fluids
Fluid temperatures	max +140°F
Body material	Polyamide 66 with 30% glass fibre
Gaskets	NBR
Actuator	Ø2.76in (Ø70mm)

CODE ①	Port Size	Orifice Size		Flow Factor Cv (gpm)	Actuator pilot pressure				Operating Pressure Differential (M.O.P.D.)				Max allowable pressure PS		Weight	
		(in)	(mm)		Min (psi)	(bar)	Max (psi)	(bar)	Min (psi)	(bar)	Max (psi)	(bar)	(psi)	(bar)	(lb)	(Kg)
P270D...W15/V	1/2	0.59	15	5.5	21.8	1.5	145	10	0	0	see pressure table (next page)	580	40	2.6	1.2	
P270E...W20/V	3/4	0.78	20	10.4										2.9	1.3	
P270F...W25/V	1	1	25	13.2										3.5	1.6	
P270G...W32/V	1 1/4	1.26	32	23.5								362	25	4.9	2.2	
P270H...W40/V	1 1/2	1.57	40	29.8										5.5	2.5	
P270I...W50/V	2	1.97	50	43										8.2	3.7	

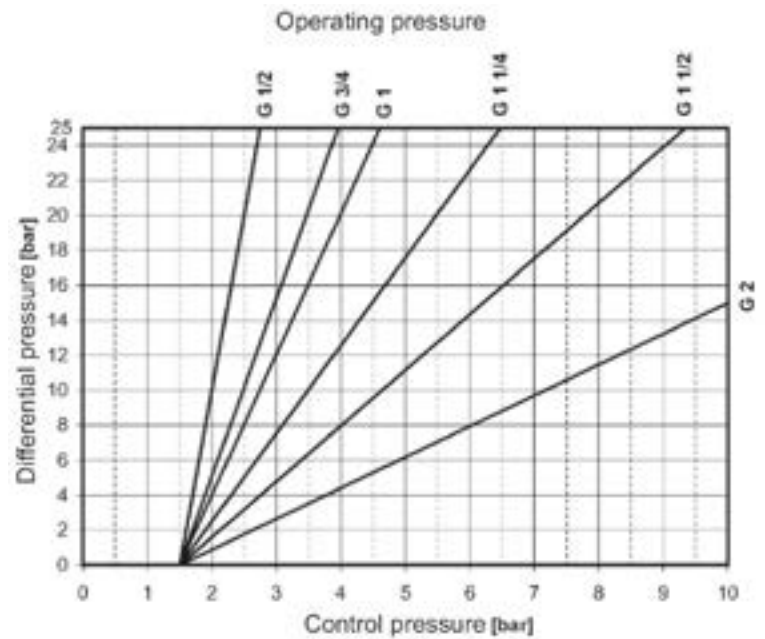
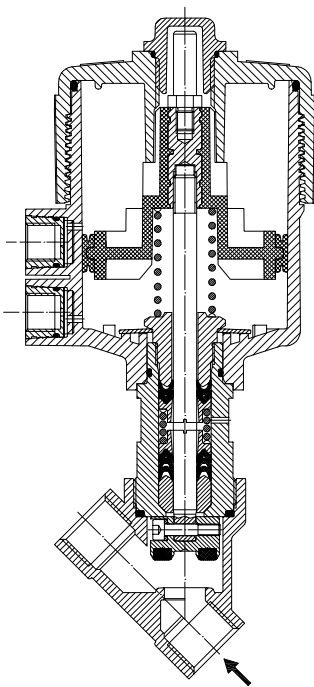
① G= GAS (ISO228)
N= NPT (ANSI/ASME B1.20.1)

Ordination example: P270FGW25/V connection G1"



CE Approval

(Pressure equipment directive 97/23/CE)
for valves P270G_W32 - P270H_W40 - P270I_W50



OVERALL DIMENSION

CONNECTION GAS or NPT	A		B		C		D		H		L		T	
	in	mm	in	mm	in	mm	in	mm	in	mm	in	mm	in	mm
1/2	8.14	206.8	SW 1-1/16	SW 27	7	178.7	0.61	15.4	6.43	163.3	2.56	65	0.67	17
3/4	8.33	211.7	SW 1-1/4	SW 32	7.4	188.6	0.86	21.9	6.56	166.7	2.97	75.5	0.75	19
1	8.66	220.1	SW 1-5/8	SW 41	7.8	197.8	0.99	25.1	6.8	172.7	3.54	90	0.83	21
1 1/4	9.29	235.9	SW 2	SW 50	8.4	212.3	1.12	28.5	7.24	183.8	4.33	110	0.95	24
1 1/2	9.41	238.9	SW 2-1/4	SW 55	8.5	217.0	1.22	31.0	7.32	186	4.8	122	1	25.2
2	9.76	247.8	SW 2-3/4	SW 70	9	229.7	1.48	37.5	7.57	192.2	5.95	151	1.12	28.5

