

# PE100 Series Valves



800.909.4988  
info@rankinusa.com

**RANKIN**   
COMPONENTS THAT AUTOMATE

**DESCRIPTION**

2 way normally closed angle seat valve pneumatically operated.  
Inlet under seat.

**PRESENTATION**

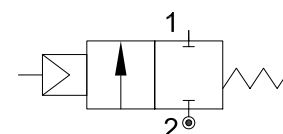
- Compact valve
- Water hammer effect prevention (inlet under seat)
- Protected visual position indicator
- PTFE sealing pack
- NPT thread on request
- Maintenance free sealing pack
- Normally open version available on request
- Double acting version available on request
- Pilot thread: G1/8" (G1/4" for 125 mm actuators)
- Universal mounting position



**USE:** Packaging, Drinks Filling Machinery, Textile printing,  
Pharmacy & Medical Equipment, Chemical industry,  
Foaming Equipment, Water/sewage Disposal

**5**

**CONNECTION:** Threaded (NPT, BSP)

**VALVE FEATURES**

Fluid Pressure	Up to max 16bar
Control Pressure	from 3.5bar (see table)
Control Fluid	Neutral gas, Air
Body material	Stainless steel AISI 316
Sealing	PTFE
Actuator Material	AISI 304 or Aluminium (125 mm)
Actuator Size	40mm, 50mm, 63mm, 90mm, 125mm
Fluids	Water, Alcohol, Oils, Fuels, Steam, Natural gases or Liquids, Organic solvents, Acids and Lyes
Fluid viscosity	Max 600cSt (mm <sup>2</sup> /s)
Fluid temperature	-10°C to +180°C
Ambient temperature	-10°C to +80°C
Control Type	Normally closed, (on request Normally open, Double acting)

CODE	Actuator	DN	Pilot Pressure	Max Pressure	Q	C	R	K	Threaded connection					
									G	T	A	L	SW	
		mm	bar	bar		mm	mm	mm		mm	mm	mm	mm	mm
PE140CGW10/V	Ø40	DN10	4	0 - 13	G1/8"	50.5	27	112	G3/8"	12	124	68	27	
PE150CGW10/V	Ø50		4.5	0 - 14	G1/8"	60	33	125			135			
PE140DGW15/V	Ø40	DN15	4	0 - 13	G1/8"	50.5	27	112	G1/2"	12	124	68	27	
PE150DGW15/V	Ø50		4.5	0 - 14	G1/8"	60	33	125			135			
PE150EGW20/V	Ø50	DN20	4.5	0 - 14	G1/8"	60	33	132	G3/4"	16	140	75	32	
PE150FGW25/V	Ø50	DN25	4.5	0 - 8	G1/8"	60	33	136	G1"	17	150	90	40	
PE163FGW25/V	Ø63		5	0 - 13	G1/8"	75	41	162			172			
PE190FGW25/V	Ø90		3.5	0 - 14	G1/8"	106	55	223			235			
PE163GGW32/V	Ø63	DN32	5	0 - 6	G1/8"	75	41	174	G1 1/4"	21	190	116	50	
PE190GGW32/V	Ø90		6	0 - 16	G1/8"	106	55	223			235			
PE163HGW40/V	Ø63	DN40	5	0 - 5	G1/8"	75	41	175	G1 1/2"	21	190	116	56	
PE190HGW40/V	Ø90		6	0 - 16	G1/8"	106	55	223			235			
PE163IGW50/V	Ø63	DN50	5	0 - 3	G1/8"	75	41	183	G2"	22	205	138	69	
PE190IGW50/V	Ø90		6	0 - 10	G1/8"	106	55	232			250			
PE190MGW65/V	Ø90	DN65	6	0 - 6	G1/8"	106	55	265	G2 1/2"	26	285	178	85	
PE1125MGW65/V	Ø125AL		5.5	0 - 9	G1/4"	170	85	315			327			
PE1125RGW80/V	Ø125AL	DN80	5.5	0 - 5	G1/4"	170	85	327	G3"	27	380	210	100	

