

PF100 Series Valves



800.909.4988
info@rankinusa.com

RANKIN
COMPONENTS THAT AUTOMATE



DESCRIPTION

2 way normally closed angle seat valve pneumatically operated.
Inlet under seat. Flanged connections.

PRESENTATION

- Easy to mount with flanged connection
- Water hammer effect prevention
- Protected visual position indicator
- PTFE sealing pack
- Maintenance free sealing pack
- Normally open version available on request
- Double acting version available on request
- Pilot thread: 1/8" GAS
- Universal mounting position

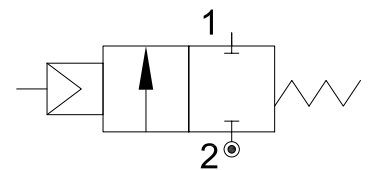


USE: Packaging, Drinks Filling Machinery, Textile printing,
Pharmacy & Medical Equipment, Chemical industry,
Foaming Equipment, Water/sewage Disposal

CONNECTION: Flanged acc. to DIN2576

VALVE FEATURES

Fluid Pressure	Up to max 16bar
Control Pressure	from 4bar (see table)
Control Fluid	Neutral gas, Air
Body material	Stainless steel AISI 316
Sealing	PTFE
Actuator Material	AISI 304
Actuator Size	40mm, 50mm, 63mm, 90mm
Fluids	Water, Alcohol, Oils, Fuels, Steam, Natural gases or Liquids, Organic solvents, Acids and Lyes
Fluid viscosity	Max 600cSt (mm ² /s)
Fluid temperature	-10°C a +180°C
Ambient temperature	-10°C a +80°C
Control Type	Normally closed, (on request Normally open, Double acting)



CODE	Actuator mm	DN mm	Pilot Pressure bar	Max Pressure bar	Q G1/8	A mm	B mm	L mm	C mm	H mm	ØE mm	n°ØF mm	ØM mm	ØN mm	ØP mm	α
PF140DGW15/V	Ø40	DN15	4	0 - 13	G1/8	135	125	130	2	14	65	4-14	16	45	95	45°
PF150DGW15/V	Ø50		4.5	0 - 14		145	140									
PF150EGW20/V	Ø50	DN20	4.5	0 - 14	G1/8	165	140	150	2	14	75	4-14	19	56	105	45°
PF150FGW25/V	Ø50	DN25	4.5	0 - 8	G1/8	170	145	160	2	14	85	4-14	26	65	115	45°
PF163FGW25/V	Ø63		5	0 - 13		190	175									
PF163GGW32/V	Ø63	DN32	5	0 - 6	G1/8	190	188	180	2	16	100	4-18	31	78	140	45°
PF190GGW32/V	Ø90		6	0 - 16		230	235									
PF163HGW40/V	Ø63	DN40	5	0 - 5	G1/8	206	190	200	3	16	110	4-18	38	84	150	45°
PF190HGW40/V	Ø90		6	0 - 16		250	240									
PF163IGW50/V	Ø63	DN50	5	0 - 3	G1/8	235	195	230	3	16	125	4-18	49	100	165	45°
PF190IGW50/V	Ø90		6	0-16		277	245									
PF190MGW65/V	Ø90	DN65	6	0 - 6	G1/8	330	280	290	3	18	145	4-18	66	120	185	45°
PF1125MGW65/V	Ø125		5.5	0 - 9		G1/4	375									
PF1125RGW80/V	Ø125	DN80	5.5	0 - 5	G1/4	380	355	310	3	20	160	8-18	78	135	200	22.5°
PF1125SGW100/V	Ø125	DN100	5.5	0 - 2.5	G1/4	420	395	350	3	20	180	8-18	96	155	215	22.5°

