

# PF100 Series Valves



800.909.4988  
info@rankinusa.com

**RANKIN**   
COMPONENTS THAT AUTOMATE

## DESCRIPTION

2 way normally closed angle seat valve pneumatically operated.  
Inlet under seat. Flanged connections.

## PRESENTATION

- Easy to mount with flanged connection
- Water hammer effect prevention
- Protected visual position indicator
- PTFE sealing pack
- Maintenance free sealing pack
- Normally open version available on request
- Double acting version available on request
- Pilot thread: 1/8" GAS
- Universal mounting position

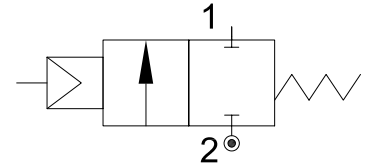


**USE:** Packaging, Drinks Filling Machinery, Textile printing,  
Pharmacy & Medical Equipment, Chemical industry,  
Foaming Equipment, Water/sewage Disposal

**CONNECTION:** Flanged acc. to DIN2576

## VALVE FEATURES

Fluid Pressure	Up to max 232psi (16bar)
Control Pressure	58 - 87psi (4 - 6bar)(see table)
Control Fluid	Neutral gas, Air
Body material	Stainless steel AISI 316
Sealing	PTFE
Actuator Material	AISI 304
Actuator Size	1.6 - 2 - 2.5 - 3.5 inches (40 - 50 - 63 - 90mm)
Fluids	Water, Alcohol, Oils, Fuels, Steam, Natural gases or Liquids, Organic solvents, Acids and Lyes
Fluid viscosity	Max 600cSt (mm <sup>2</sup> /s)
Fluid temperature	14°F +356°F (-10°C to +180°C)
Ambient temperature	14°F +176°F (-10°C to +80°C)
Control Type	Normally closed, (on request Normally open, Double acting)



For piloting please use the solenoid valve E311ANB15///U35D (3/2NC, Ø1.5mm, 120V AC UL approved)

CODE	Actuator Diameter		Nominal Diameter		Pilot Pressure		Max Pressure		Q	A	B	L	C	H	ØE	n°ØF	ØM	ØN	ØP	α
	inches	mm	inches	mm	psi	bar	psi	bar												
PF140DGW15/V	40	1.57	0.59	15	58	4	188	13	G1/8	5.3	4.9	5.1	0.08	0.55	2.56	4-0.55	1.63	1.77	3.74	45°
PF150DGW15/V	50	1.97			65	4.5	203	14		5.7	5.5									
PF150EGW20/V	50	1.97	0.79	20	65	4.5	203	14	G1/8	6.5	5.5	5.9	0.08	0.55	2.95	4-0.55	0.75	2.2	4.13	45°
PF150FGW25/V	50	1.97	0.98	25	65	4.5	116	8	G1/8	6.7	5.7	6.3	0.08	0.55	3.35	4-0.55	1.02	2.56	4.53	45°
PF163FGW25/V	63	2.48			72.5	5	188	13		G1/8	7.5									
PF163GGW32/V	63	2.48	1.26	32	72.5	5	87	6	G1/8	7.5	7.4	7.1	0.08	0.63	3.94	4-0.71	1.22	3.07	5.51	45°
PF190GGW32/V	90	3.54			87	6	232	16		G1/8	9.1									
PF163HGW40/V	63	2.48	1.57	40	72.5	5	72.5	5	G1/8	8.1	7.5	7.9	0.12	0.63	4.33	4-0.71	1.5	3.31	5.91	45°
PF190HGW40/V	90	3.54			87	6	232	16		G1/8	9.8									
PF163IGW50/V	63	2.48	1.97	50	72.5	5	43.5	3	G1/8	9.3	7.7	9.1	0.12	0.63	4.92	4-0.71	1.93	3.94	6.5	45°
PF190IGW50/V	90	3.54			87	6	232	16		G1/8	10.9									
PF190MGW65/V	90	3.54	2.56	65	87	6	87.0	6	G1/8	13.0	11.0	11.4	0.12	0.71	5.71	4-0.71	2.6	4.72	7.28	45°
PF1125MGW65/V	125	4.92			79.8	5.5	130	9		G1/4	14.8									
PF1125RGW80/V	125	4.92	3.15	80	79.8	5.5	72.5	5	G1/4	15.0	14.0	12.2	0.12	0.79	6.3	4-0.71	3.07	5.31	7.87	22.5°
PF1125SGW100/V	125	4.92	3.94	100	79.8	5.5	36	2.5	G1/4	16.5	15.6	13.8	0.12	0.79	7.09	4-0.71	3.78	6.1	8.46	22.5°

