

# PM100 Series Valves



800.909.4988  
info@rankinusa.com

**RANKIN**   
COMPONENTS THAT AUTOMATE

**DESCRIPTION**

2 way bi-stable (double acting) pneumatically operated valve.  
Modular assembling.

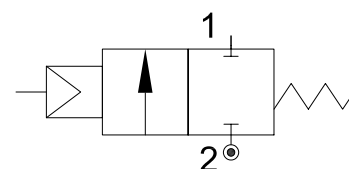
**PRESENTATION**

- Best choice for fluid mixing
- Flanged connection modularity
- Water hammer effect prevention
- Protected visual position indicator
- PTFE sealing pack
- Maintenance free sealing pack
- Pilot thread: G1/8"
- Universal mounting position

**USE:** Packaging, Drinks Filling Machinery, Textile printing,  
Pharmacy & Medical Equipment, Chemical industry,  
Foaming Equipment, Water/sewage Disposal

**CONNECTION:** Threaded (BSP, NPT)

**CONNECTION KIT:** Inlet plate (plate+OR+screws+nuts) Female  
Modules connection kit (OR+screws+nuts)  
End plate (plate+OR+screws+nuts) Male  
Threaded connection kit available on request

**5**

cod.14913000  
cod.14914000  
cod.14915000

**VALVE FEATURES**

Fluid Pressure	Up to max 14bar
Control Pressure	from 4.5bar (see table)
Control Fluid	Neutral gas, Air
Body material	Stainless steel AISI 316
Sealing	PTFE
Actuator Material	AISI 304
Actuator Size	50mm
Fluids	Water, Alcohol, Oils, Fuels, Steam, Natural gases or Liquids, Organic solvents, Acids and Lyes
Fluid viscosity	Max 600cSt (mm <sup>2</sup> /s)
Fluid temperature	-10°C to +180°C
Ambient temperature	-10°C to +80°C
Control Type	Double acting (/NC and /NO)

**OPTIONS**

Normally closed and normally open versions (add /NC or /NO to the valve code)

CODE	DN (ØD)	Pilot Pressure	Max Pressure	A	L	K	2-ØF	E	ØD	Ød	G	SW
	mm	bar	bar	mm	mm	mm	mm	mm	mm	mm		mm
PM150DGW15/V	DN20	4.5	0 - 14	153	76	35	8.5	50	25	18	1/2"	27
PM150FGW25/V	DN25	4.5	0 - 8	153	90	46	8.5	57	32	24	1"	39

Ordination example:

PM150XGW20/V to order an ASV 2/2 Double effect, Outlet threaded G3/4", PTFE sealing, with visual indicator

PM150XGW20/V/NC to order an ASV 2/2 Normally closed, Outlet threaded G3/4", PTFE sealing, with visual indicator

