

PS100 Series Valves



800.909.4988
info@rankinusa.com

RANKIN 
COMPONENTS THAT AUTOMATE

DESCRIPTION

2 way normally closed angle seat valve pneumatically operated.
Inlet under seat. Welded socket.

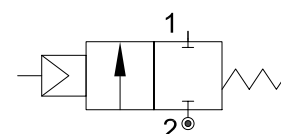
PRESENTATION

- Welded Socket Valve Acc. to DIN 11850-2
- Optional Socket Valve Acc. to DIN 11850-3
- Water Hammer effect prevention (inlet under seat)
- Protected visual position indicator
- PTFE sealing pack
- Maintenance free sealing pack
- Double acting version available on request
- Normally open version available on request
- Pilot thread: 1/8" (1/4" for 125 mm actuators) BSP or NPT
- Universal mounting position

USE: Packaging, Drinks Filling Machinery, Textile printing,
Pharmacy & Medical Equipment, Chemical industry,
Foaming Equipment, Water/sewage Disposal



CONNECTION: Welded Acc. to DIN 11850-2

**5****VALVE FEATURES**

Fluid Pressure	Up to max 232psi (16bar)
Control Pressure	50 - 87psi (3.5 - 6bar)(see table)
Control Fluid	Neutral gas, Air
Body material	Stainless steel AISI 316
Sealing	PTFE
Actuator Material	AISI 304 or Aluminium for 4.9inches actuator
Actuator Size	1.6 - 2 - 2.5 - 3.5 - 4.9 inches (40 - 50 - 63 - 90 - 125 mm)
Fluids	Water, Alcohol, Oils, Fuels, Steam, Natural gases or Liquids, Organic solvents, Acids and Lyes
Fluid viscosity	Max 600cSt (mm ² /s)
Fluid temperature	14°F +356°F (-10°C to +180°C)
Ambient temperature	14°F +176°F (-10°C to +80°C)
Control Type	Normally closed (on request Normally open, Double acting)

For piloting please use the solenoid valve E311ANB15///U35D (3/2NC, Ø1.5, 120V AC UL approved)

CODE	Actuator Diameter		Nominal Diameter		Pilot Pressure		Max Pressure		Q	C	R	K	Welded connection						
	inches	mm	inches	mm	psi	bar	psi	bar					inches	inches	inches	HA	HL	DIN 11850-2	
																		D	S
PS140DGW15/V	1.57	40	0.59	15	58	4	188	13	G1/8"	1.99	1.06	4.41	4.65	2.76	0.75	0.06			
PS150DGW15/V	1.97	50			65	4.5	203	14	G1/8"	2.36	1.30	4.92	5.04						
PS150EGW20/V	1.97	50	0.79	20	65	4.5	203	14	G1/8"	2.36	1.30	5.20	5.31	3.23	0.91	0.06			
PS150FGW25/V	1.97	50	1	25	65	4.5	116	8	G1/8"	2.36	1.30	5.35	5.91	3.94	1.14	0.06			
PS163FGW25/V	2.48	63			72.5	5	188	13	G1/8"	2.95	1.61	6.38	6.89						
PS190FGW25/V	3.54	90			50	3.5	203	14	G1/8"	4.17	2.17	8.31	8.58						
PS163GGW32/V	2.48	63	1.26	32	72.5	5	87	6	G1/8"	2.95	1.61	6.85	7.32	4.92	1.38	0.06			
PS190GGW32/V	3.54	90			87	6	232	16	G1/8"	4.17	2.17	8.78	9.13						
PS163HGW40/V	2.48	63	1.57	40	72.5	5	72.5	5	G1/8"	2.95	1.61	6.89	7.48	5.12	1.61	0.06			
PS190HGW40/V	3.54	90			87	6	232	16	G1/8"	4.17	2.17	8.78	9.25						
PS163IGW50/V	2.48	63	2	50	72.5	5	43.5	3	G1/8"	2.95	1.61	7.20	8.11	6.1	2.09	0.06			
PS190IGW50/V	3.54	90			87	6	14.5	10	G1/8"	4.17	2.17	9.13	9.84						
PS190MGW65/V	3.54	90	2.56	65	87	6	87	6	G1/8"	4.17	2.17	10.43	12.80	10.63	2.76	0.08			
PS1125MGW65/V	4.92	125			80	5.5	130	9	G1/4"	6.69	3.35	12.40	14.37						
PS1125RGW80/V	4.92	125	3.15	80	80	5.5	72.5	5	G1/4"	6.69	3.35	12.87	15	11.18	3.35	0.08			

