

PT100 Series Valves



800.909.4988
info@rankinusa.com

RANKIN 
COMPONENTS THAT AUTOMATE

DESCRIPTION

2 way normally closed angle seat valve pneumatically operated.
Inlet under seat. Tri-Clamp connections.

PRESENTATION

- Tri-Clamp connection Acc.to ISO2852-1993
- Water hammer effect prevention
- Protected visual position indicator
- PTFE sealing pack
- Maintenance free sealing pack
- Normally open version available on request
- Double acting version available on request
- Pilot thread: 1/8" GAS
- Universal mounting position

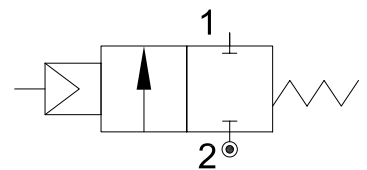


USE: Packaging, Drinks Filling Machinery, Textile printing, Pharmacy & Medical Equipment, Chemical industry, Foaming Equipment, Water/sewage Disposal

CONNECTION: Tri-Clamp ISO2852-1993

VALVE FEATURES

Fluid Pressure	Up to max 14bar
Control Pressure	from 4bar (see table)
Control Fluid	Neutral gas, Air
Body material	Stainless steel AISI 316
Sealing	PTFE
Actuator Material	AISI 304
Actuator Size	40mm, 50mm, 63mm, 90mm
Fluids	Water, Alcohol, Oils, Fuels, Steam, Natural gases or Liquids, Organic solvents, Acids and Lyes
Fluid viscosity	Max 600cSt (mm ² /s)
Fluid temperature	-10°C a +180°C
Ambient temperature	-10°C a +80°C
Control Type	Normally closed, (on request Normally open, Double acting)



CODE	Actuator	DN	Pilot Pressure	Max Pressure	Q	A	K	Tri-clamp connection				
								L	C	B	Ød	ØD
	mm	mm	bar	bar		mm	mm	mm	mm	mm	mm	mm
PT140DGW15/V	Ø40	DN15	4	13	G1/8"	130	115	80	19	27.5	15	34
PT150DGW15/V	Ø50		4.5	14	G1/8"	140	126					
PT150EGW20/V	Ø50	DN20	4.5	14	G1/8"	148	126	102	25	43.5	21	50.5
PT150FGW25/V	Ø50	DN25	4.5	8	G1/8"	165	140	130	32	43.5	27	50.5
PT163FGW25/V	Ø63		5	13	G1/8"	188	166					
PT163GGW32/V	Ø63	DN32	5	6	G1/8"	200	174	146	37	43.5	31	50.5
PT163HGW40/V	Ø63	DN40	5	5	G1/8"	210	175	160	40	56.5	33	64
PT163IGW50/V	Ø63	DN50	5	3	G1/8"	221	185	175	53	56.5	45	64
PT190IGW50/V	Ø90	DN50	6	10	G1/8"	265	235					

