

PT13 Series D.O.T. Push-in Fittings

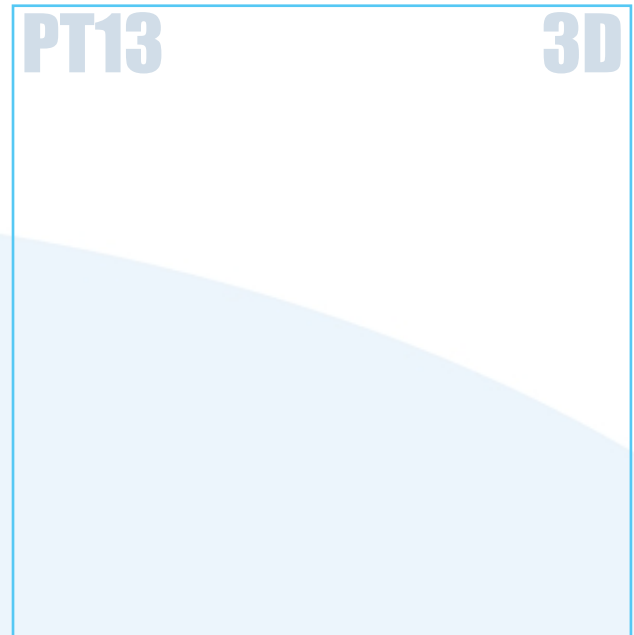
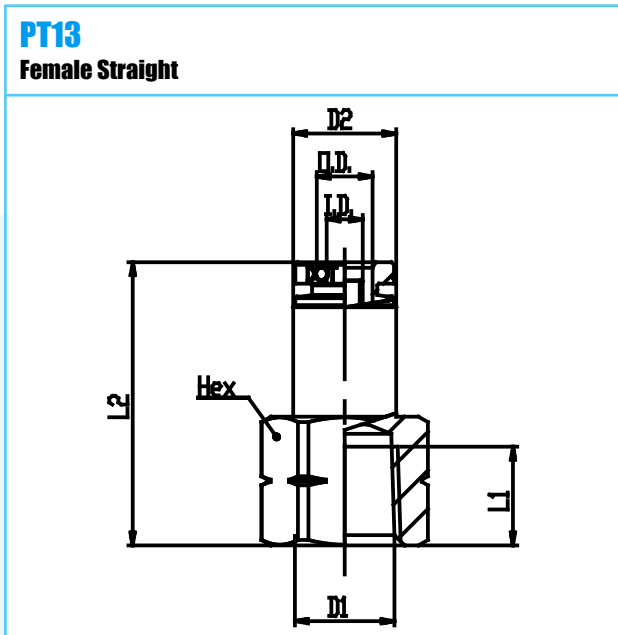


800.909.4988
info@rankinusa.com

Material:	Brass	
Working Temperature:	-50 ÷ 100	C°
Working Temperature:	-58 ÷ 212	F°
Working Pressure (max):	20	bar
Working Pressure (max):	290	psi
Vacuum:	-99	kPa
Vacuum:	29"	Hg
Conformity:	RoHS	

Conformity:
Conformity:
Conformity:
Conformity:
Application

Pneumatic circuits for truck and Trailers : Air Suspension, Braking Systems, Transmissions, locking doors and windows, Seat adjustment, Instrumentation, Air conditioning systems, horn, wiper motors, valves, cylinders and accessories



CODE	TYPE	TUBEOD	TUBEID	IDIN	D1NPTF	D2	D2IN	L1	L1IN	L2	L2IN	HEX	G	OZ	WTF	WPP	TVH
2T030011	PT13 5/32 1/8	5/32"	2.2	.087	1/8	9.5	.374	8.5	.335	26.5	1.043	1/2	-	-	-58 ÷ 212	290	29"
2T030031	PT13 1/4 1/8	1/4"	4.2	.165	1/8	12	.472	8.5	.335	28.5	1.122	1/2	16	.564	-58 ÷ 212	290	29"
2T030032	PT13 1/4 1/4	1/4"	4.2	.165	1/4	12	.472	12	.472	33	1.299	11/16"	28.5	1.005	-58 ÷ 212	290	29"
2T030052	PT13 3/8 1/4	3/8"	4.2	.165	1/4	16	.630	12	.472	35	1.378	11/16"	22	.776	-58 ÷ 212	290	29"
2T030053	PT13 3/8 3/8	3/8"	6.2	.244	3/8	16	.630	12.5	.492	35	1.378	13/16"	40.3	1.422	-58 ÷ 212	290	29"
2T030054	PT13 3/8 1/2	3/8"	6.2	.244	1/2	16	.630	13.5	.531	38.5	1.516	1"	-	-	-58 ÷ 212	290	29"
2T030062	PT13 1/2 1/4	1/2"	9.2	.362	1/4	20	.787	12	.472	35.2	1.386	13/16"	-	-	-58 ÷ 212	290	29"
2T030063	PT13 1/2 3/8	1/2"	9.2	.362	3/8	20	.787	12.5	.492	36.7	1.445	13/16"	-	-	-58 ÷ 212	290	29"
2T030064	PT13 1/2 1/2	1/2"	9.2	.362	1/2	20	.787	13.5	.531	39.2	1.543	1"	-	-	-58 ÷ 212	290	29"