



PNEUMAX

PVF Series Valves



800.909.4988 // info@rankinusa.com // rankinusa.com

RANKIN

COMPONENTS THAT AUTOMATE



Series PVF

Angle seat valves with AISI 316 or 304 stainless steel body.

2-way angle seat valve. Threaded ports (Designed to prevent water hammer) - 1/2" ... 3"

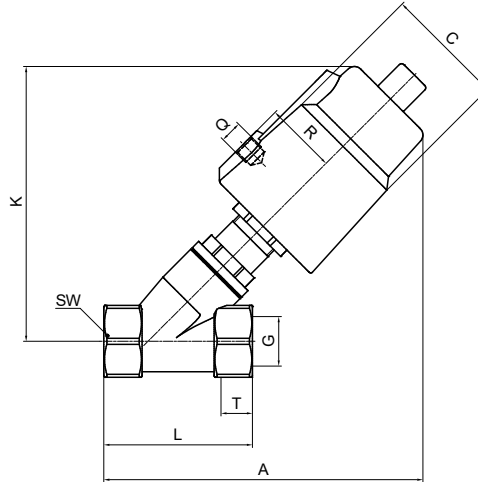


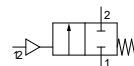
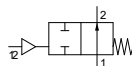
Table of dimensions

CODE	F= Function		G connection	Actuator (mm)	C (mm)	R (mm)	K (mm)	Q (mm)	T (mm)	A (mm)	L (mm)	SW (mm)	M= Material	
	N.O.	N.C.											AISI	
PVF40F15-M	0	1	1/2"	40	50,5	27	111	1/8"	15	119	68	27	304	316
PVF50F15-M				50	60	33	124			131				
PVF50F20-M			3/4"	50	60	33	132	1/8"	16	140	75	32		
PVF50F25-M				50	60	33	136			145				
PVF63F25-M			1"	63	75	41	162	1/8"	17	169	90	40		
PVF63F32-M				63	75	41	174			187				
PVF90F32-M			1-1/4"	90	106	55	223	1/8"	21	235	116	50		
PVF63F40-M				63	75	41	175			187				
PVF90F40-M			1-1/2"	90	106	55	223	1/8"	21	235	116	56		
PVF63F50-M				63	75	41	183			201				
PVF90F50-M			2"	90	106	55	232	1/8"	22	250	138	69		
PVF125AF65-M				2-1/2"	125 (Aluminium)	148	74			302				
PVF125AF80-M			3"	125 (Aluminium)	148	74	313	1/4"	27	372	210	100		

Technical data (N.O. - N.C. versions)

CODE	F= Function		G connection	KV (m³/h)	Actuator (mm)	Maximum ΔP (bar) (N.O.)		Maximum ΔP (bar) (N.C.)		Pilot pressure (bar)	M= Material		
	N.O.	N.C.				Above seat	Under seat	Above seat	Under seat		AISI		
PVF40F15-M	0	1	1/2"	4,8	40	16	16	16	13	3 ... 8	304	316	
PVF50F15-M				4,8	50	16	16	16	14				
PVF50F20-M			3/4"	10	50	12	16	16	14				
PVF50F25-M				14	50	3	13	16	8				
PVF63F25-M			1"	14	63	16	16	16	13				
PVF63F32-M				23	63	14	13	16	6				
PVF90F32-M			1-1/4"	23	90	/	/	16	16				
PVF63F40-M				30	63	14	7	16	5				
PVF90F40-M			1-1/2"	30	90	/	16	16	16				
PVF63F50-M				70	63	6	5	9	3				
PVF90F50-M			2"	70	90	/	12	16	10				
PVF125AF65-M				2-1/2"	107	125 (Aluminium)	/	14	16				9
PVF125AF80-M			3"	157	125 (Aluminium)	/	12	12	5				3 ... 10

Pneumatic symbol



Construction characteristics	Technical characteristics (Valve body)	Technical characteristics (Actuator)
<ul style="list-style-type: none"> - High flow rate thanks to body configuration with inclined seating - Anti water hammer functioning with input below poppet - Pneumatically operated valve with stainless steel body, resistant to ambient corrosion - Self-leveling poppet to ensure improved sealing - Optical position indicator - Self-adjusting maintenance free stuffer seals package - Valves may be mounted in all positions <p>OPTIONS (on request):</p> <ul style="list-style-type: none"> - Double acting versions are available on request - Connection type: GAS ISO / NPT 	<ul style="list-style-type: none"> - Material: AISI 316/304 stainless steel - Fluid temperature: -10 °C ... + 180 °C - Ambient temperature: -10 °C ... + 80 °C - Fluid viscosity: max. 600cSt. - Poppet: PTFE - Seals package: PTFE and FKM 	<ul style="list-style-type: none"> - Body: AISI 304 - Pilot fluid: dry or lubricated air, gas and neutral fluids - Fluid temperature: max. +60 °C



► 2-way angle seat valve. Welded connection (Designed to prevent water hammer)

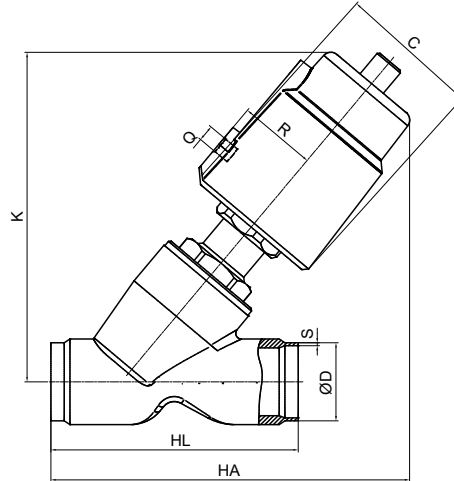


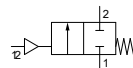
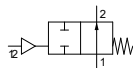
Table of dimensions

CODE	F= Function		Actuator (mm)	C (mm)	R (mm)	K (mm)	Q (mm)	HA (mm)	HL (mm)	DIN11850-2		DIN11850-3		M= Material	
	N.O.	N.C.								D	S	D	S	AISI 304	AISI 316
PVF40F15H-M	0	1	40	50,5	27	112	1/8"	118	70	19	1,5	2	A	B	
PVF50F15H-M			50	60	33	125		128							
PVF50F20H-M			50	60	33	132		135	24						
PVF50F25H-M			50	60	33	136		150	30						
PVF63F25H-M			63	75	41	162		175	30						
PVF63F32H-M			63	75	41	174		186	36						
PVF90F32H-M			90	106	55	223		232	42						
PVF63F40H-M			63	75	41	175		190	42						
PVF90F40H-M			90	106	55	223		235	54						
PVF63F50H-M			63	75	41	183		206							
PVF90F50H-M			90	106	55	232		250							

Technical data (N.O. - N.C. versions)

CODE	F= Function		KV (m³/h)	Actuator (mm)	Maximum ΔP (bar) (N.O.)		Maximum ΔP (bar) (N.C.)		Pilot pressure (bar)	M= Material	
	N.O.	N.C.			Above seat	Under seat	Above seat	Under seat		AISI 304	AISI 316
PVF40F15H-M	0	1	4,8	40	16	16	16	13	3 ... 8	A	B
PVF50F15H-M			4,8	50	16	16	16	14			
PVF50F20H-M			10	50	12	16	16	14			
PVF50F25H-M			14	50	3	13	16	8			
PVF63F25H-M			14	63	16	16	16	13			
PVF63F32H-M			23	63	14	13	16	6			
PVF90F32H-M			23	90	/	/	16	16			
PVF63F40H-M			30	63	14	7	16	5			
PVF90F40H-M			30	90	/	16	16	16			
PVF63F50H-M			70	63	6	5	9	3			
PVF90F50H-M			70	90	/	12	16	10			

Pneumatic symbol



Construction characteristics	Technical characteristics (Valve body)	Technical characteristics (Actuator)
<ul style="list-style-type: none"> - High flow rate thanks to body configuration with inclined seating - Anti water hammer functioning with input below poppet - Pneumatically operated valve with stainless steel body, resistant to ambient corrosion - Self-levelling poppet to ensure improved sealing - Optical position indicator - Self-adjusting maintenance free stuffer seals package - Valves may be mounted in all positions <p>OPTIONS (on request):</p> <ul style="list-style-type: none"> - Double acting versions are available on request 	<ul style="list-style-type: none"> - Material: AISI 316/304 stainless steel - Fluid temperature: -10 °C ... +180 °C - Ambient temperature: -10 °C ... +80 °C - Fluid viscosity: max. 600cSt. - Poppet: PTFE - Seals package: PTFE and FKM 	<ul style="list-style-type: none"> - Body: AISI 304 - Pilot fluid: dry or lubricated air, gas and neutral fluids - Fluid temperature: max. +60 °C

2-way angle seat valve. Clamp ISO 2852 (Designed to prevent water hammer)

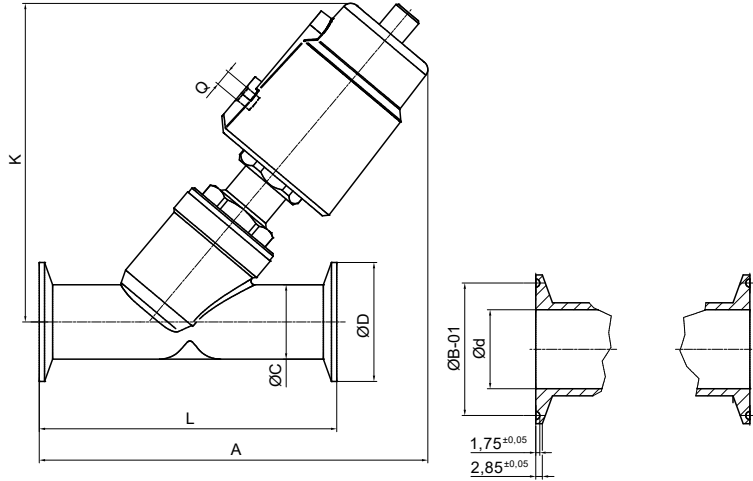


Table of dimensions

CODE	F= Function		Actuator (mm)	A (mm)	K (mm)	Q (mm)	L (mm)	C (mm)	B (mm)	Ød	ØD	M= Material	
	N.O.	N.C.										AISI 304	AISI 316
PVF40F15K-M	0	1	40	130	115	1/8"	80	19	27,5	15	34	A	B
PVF50F15K-M			50	140	126		130	25	43,5	19	50,5		
PVF50F20K-M			50	158	148		130	32	43,5	27	50,5		
PVF50F25K-M			50	165	140		130	32	43,5	27	50,5		
PVF63F25K-M			63	188	166		146	37	43,5	31	50,5		
PVF63F32K-M			63	200	174		160	40	56,5	33	64		
PVF90F32K-M			90	245	223		175	53	56,5	45	64		
PVF63F40K-M			63	210	175								
PVF90F40K-M			90	255	223								
PVF63F50K-M			63	221	185								
PVF90F50K-M	90	265	235										

Technical data (N.O. - N.C. versions)

CODE	F= Function		KV (m³/h)	Actuator (mm)	Maximum ΔP (bar) (N.O.)		Maximum ΔP (bar) (N.C.)		Pilot pressure (bar)	M= Material	
	N.O.	N.C.			Above seat	Under seat	Above seat	Under seat		AISI 304	AISI 316
PVF40F15K-M	0	1	4,8	40	16	16	16	13	3 ... 8	A	B
PVF50F15K-M			4,8	50	16	16	16	14			
PVF50F20K-M			10	50	12	16	16	14			
PVF50F25K-M			14	50	3	13	16	8			
PVF63F25K-M			14	63	16	16	16	13			
PVF63F32K-M			23	63	14	13	16	6			
PVF90F32K-M			23	90	/	/	16	16			
PVF63F40K-M			30	63	14	7	16	5			
PVF90F40K-M			30	90	/	16	16	16			
PVF63F50K-M			70	63	6	5	9	3			
PVF90F50K-M	70	90	/	12	16	10					

Pneumatic symbol



Construction characteristics	Technical characteristics (Valve body)	Technical characteristics (Actuator)
<ul style="list-style-type: none"> - High flow rate thanks to body configuration with inclined seating - Anti water hammer functioning with input below poppet - Pneumatically operated valve with stainless steel body, resistant to ambient corrosion - Self-levelling poppet to ensure improved sealing - Optical position indicator - Self-adjusting maintenance free stuffer seals package - Valves may be mounted in all positions <p>OPTIONS (on request):</p> <ul style="list-style-type: none"> - Double acting versions are available on request 	<ul style="list-style-type: none"> - Material: AISI 316/304 stainless steel - Fluid temperature: -10 °C ... +180 °C - Ambient temperature: -10 °C ... +80 °C - Fluid viscosity: max. 600cSt. - Poppet: PTFE - Seals package: PTFE and FKM 	<ul style="list-style-type: none"> - Body: AISI 304 - Pilot fluid: dry or lubricated air, gas and neutral fluids - Fluid temperature: max. +60 °C



► 2-way angle seat valve ASME - BPE (Designed to prevent water hammer)

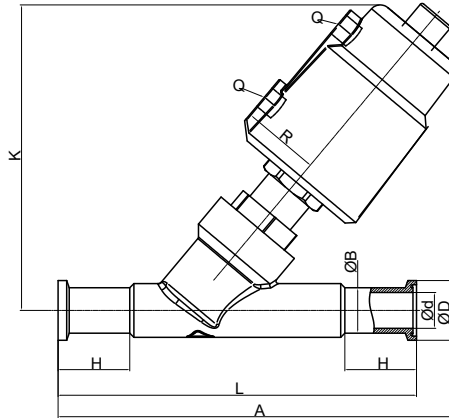


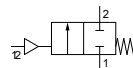
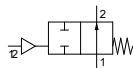
Table of dimensions

CODE	F= Function		Actuator (mm)	C (mm)	R (mm)	K (mm)	Q (mm)	A (mm)	L (mm)	ASME - BPE				M= Material	
	N.A.	N.C.								ØD (mm)	ØB (mm)	Ød (mm)	ØH (mm)	AISI 304	AISI 316
PVF40F15J-M	0	1	40	50.5	27	127	1/8"	158	130	25	12,7	9,4	30	A	B
PVF50F15J-M			50	60	33	140		169							
PVF50F20J-M			50	60	33	138		172							
PVF50F25J-M			50	60	33	146		180	160						
PVF63F25J-M			63	75	41	169		205							
PVF63F40J-M			63	75	41	177		225	200						
PVF90F40J-M			90	106	55	225		267							
PVF63F50J-M			63	75	41	187		238	230						
PVF90F50J-M			90	106	55	235		280							

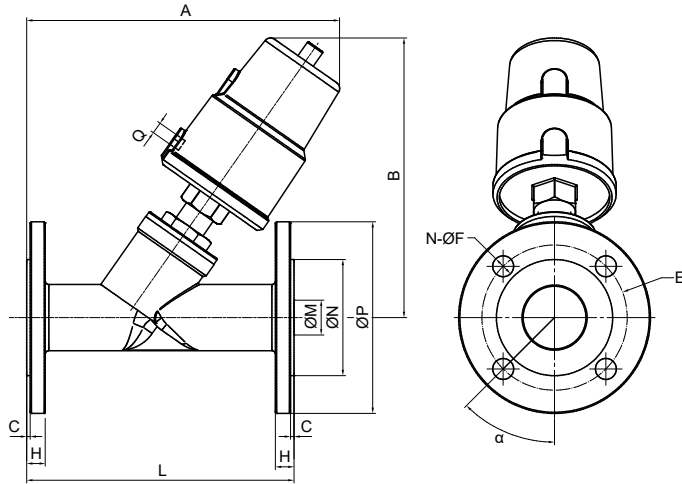
Technical data (N.O. - N.C. versions)

CODE	F= Function		KV (m³/h)	Actuator (mm)	Maximum ΔP (bar) (N.O.)		Maximum ΔP (bar) (N.C.)		Pilot pressure (bar)	M= Material	
	N.O.	N.C.			Above seat	Under seat	Above seat	Under seat		AISI 304	AISI 316
PVF40F15J-M	0	1	1,7	40	16	16	16	13	3 ... 8	A	B
PVF50F15J-M				50	16	16	16	14			
PVF50F20J-M			50	12	16	16	14				
PVF50F25J-M			11,8	50	3	13	16	8			
PVF63F25J-M				63	16	16	16	13			
PVF63F40J-M				63	14	7	16	5			
PVF90F40J-M			20,6	90	/	16	16	16			
PVF63F50J-M				63	6	5	9	3			
PVF90F50J-M			55,7	90	/	12	16	10			

Pneumatic symbol



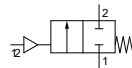
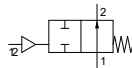
Construction characteristics	Technical characteristics (Valve body)	Technical characteristics (Actuator)
<ul style="list-style-type: none"> - High flow rate thanks to body configuration with inclined seating - Anti water hammer functioning with input below poppet - Pneumatically operated valve with stainless steel body, resistant to ambient corrosion - Self-levelling poppet to ensure improved sealing - Optical position indicator - Self-adjusting maintenance free stuffer seals package - Valves may be mounted in all positions <p>OPTIONS (on request):</p> <ul style="list-style-type: none"> - Double acting versions are available on request 	<ul style="list-style-type: none"> - Material: AISI 316/304 stainless steel - Fluid temperature: -10 °C ... +180 °C - Ambient temperature: -10 °C ... +80 °C - Fluid viscosity: max. 600cSt. - Poppet: PTFE - Seals package: PTFE and FKM 	<ul style="list-style-type: none"> - Body: AISI 304 - Pilot fluid: dry or lubricated air, gas and neutral fluids - Fluid temperature: max. +60 °C

2-way angle seat valve. Flange mounting (Designed to prevent water hammer)

Table of dimensions

CODE	F= Function		Actuator (mm)	A (mm)	B (mm)	Q (mm)	L (mm)	C (mm)	H (mm)	ØE	N-ØF	ØM	ØN	ØP	α	M= Material	
	N.O.	N.C.														AISI 304	AISI 316
PVF40F15F-M	0	1	40	135	125	1/8"	130	2	14	65	4-14	16	45	95	45°	A	B
PVF50F15F-M			50	145	140												
PVF50F20F-M			50	165	140		150	2	14	75	4-14	19	56	105			
PVF50F25F-M			50	170	145												
PVF63F25F-M			63	190	175		160	2	14	85	4-14	26	65	115			
PVF63F32F-M			63	190	188												
PVF90F32F-M			90	230	235		180	2	16	100	4-18	31	78	140			
PVF63F40F-M			63	206	190												
PVF90F40F-M			90	250	240		200	3	16	110	4-18	38	84	150			
PVF63F50F-M			63	235	195												
PVF90F50F-M	90	277	245	230	3	16	125	4-18	49	100	165						

Technical data (N.O. - N.C. versions)

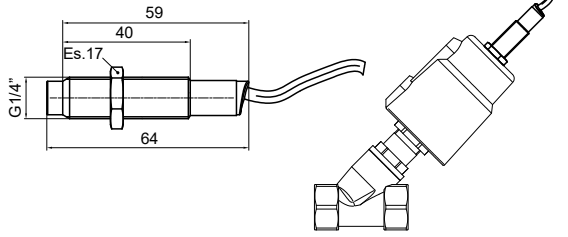
CODE	F= Function		KV (m³/h)	Actuator (mm)	Maximum ΔP (bar) (N.O.)		Maximum ΔP (bar) (N.C.)		Pilot pressure (bar)	M= Material	
	N.O.	N.C.			Above seat	Under seat	Above seat	Under seat		AISI 304	AISI 316
PVF40F15F-M	0	1	4,8	40	16	16	16	13	3 ... 8	A	B
PVF50F15F-M			4,8	50	16	16	16	14			
PVF50F20F-M			10	50	12	16	16	14			
PVF50F25F-M			14	50	3	13	16	8			
PVF63F25F-M			14	63	16	16	16	13			
PVF63F32F-M			23	63	14	13	16	6			
PVF90F32F-M			23	90	/	/	16	16			
PVF63F40F-M			30	63	14	7	16	5			
PVF90F40F-M			30	90	/	16	16	16			
PVF63F50F-M			70	63	6	5	9	3			
PVF90F50F-M	70	90	/	12	16	10					

Pneumatic symbol


Construction characteristics	Technical characteristics (Valve body)	Technical characteristics (Actuator)
<ul style="list-style-type: none"> - High flow rate thanks to body configuration with inclined seating - Anti water hammer functioning with input below poppet - Pneumatically operated valve with stainless steel body, resistant to ambient corrosion - Self-levelling poppet to ensure improved sealing - Optical position indicator - Self-adjusting maintenance free stuffer seals package - Valves may be mounted in all positions <p>OPTIONS (on request):</p> <ul style="list-style-type: none"> - Double acting versions are available on request 	<ul style="list-style-type: none"> - Material: AISI 316/304 stainless steel - Fluid temperature: -10 °C ... +180 °C - Ambient temperature: -10 °C ... +80 °C - Fluid viscosity: max. 600cSt. - Poppet: PTFE - Seals package: PTFE and FKM 	<ul style="list-style-type: none"> - Body: AISI 304 - Pilot fluid: dry or lubricated air, gas and neutral fluids - Fluid temperature: max. +60 °C



Proximity sensor



Ordering code	
PVF.T.S	
T	OUTPUT TYPE
	01= NPN (N.C.)
	02= NPN (N.O.)
	03= PNP (N.C.)
	04= PNP (N.O.)

Nickel brass sensor, usable on valves up to size 2 inches for detection ON - OFF
Cable: 2 m
OPTIONS (on request):
A reduction is available for sizes 2 1/2" and 3".

Operational characteristics					
Maximum current (mA)	Voltage field (VDC)	Temperature (°C)	Detection distance	IP Rating	Weight (g)
100	10 ... 30	-10 ... +70	3 mm (max) ±10%	IP67	69