

Pallet Stoppers

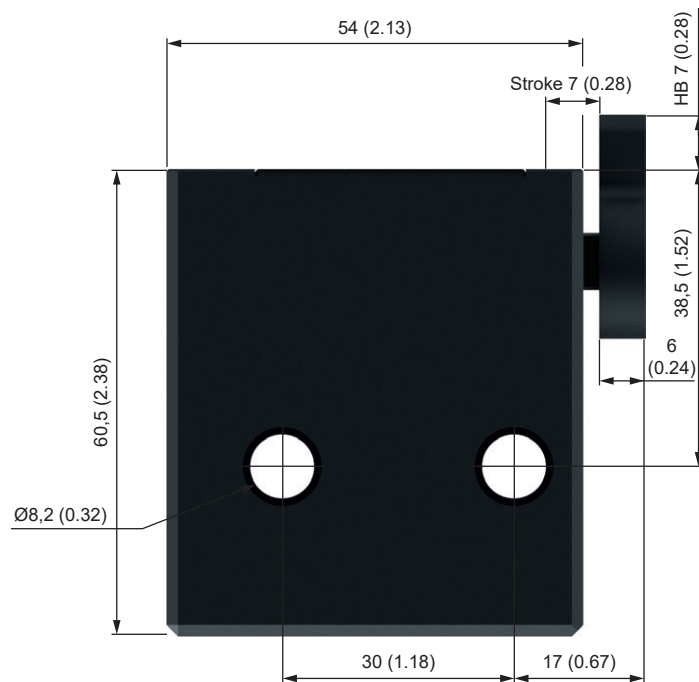
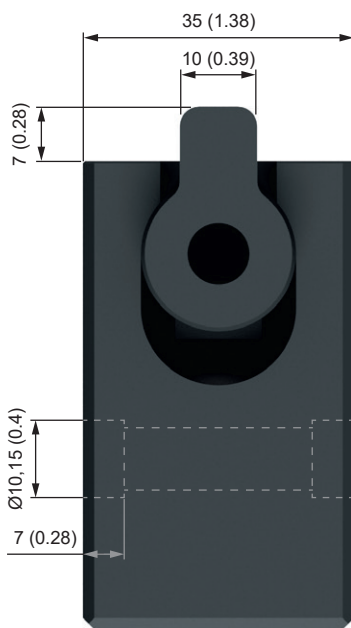


800.909.4988
info@rankinusa.com

WPS-A 15



- Precise deceleration and singulation of pallets
- Adjustable pneumatic deceleration with pneumatic piston return
- Masses up to 15 kg and speeds up to 50 m/min
- Housing: aluminium, black anodized, Stop: hard anodized
- Hardened stop
- Sensor for end position (optional)
- Special version: pallet stopper for clean room Cl. 5 (ISO), Cl. 100 (US), Cl. 3 (VDI)
- RoHS compliant Directive 2002/95/EC



PERFORMANCE

Speed	Mass kg (lbs)
6 m/min	0,25 - 15 (0.55 - 33.07)
9 m/min	0,25 - 10 (0.55 - 22.05)
12 m/min	0,25 - 9 (0.55 - 19.84)
18 m/min	0,25 - 7 (0.55 - 15.43)
24 m/min	0,25 - 6 (0.55 - 13.23)
30 m/min	0,25 - 4 (0.55 - 8.82)
36 m/min	0,25 - 2 (0.55 - 4.41)
50 m/min	0,25 - 1 (0.55 - 2.2)

Values apply to a coefficient of friction of 0.07 μ at a propelling force of at least 3 N (0.67 lbs).

SPECIFICATIONS

Working Pressure	4 - 8 bar (58.02 - 116.03 psi)
Compressed Air	treated
Tube Diameter	6 - 8 mm (0.24 - 0.31 inch)
Stroke horizontal	7 mm (0.28 inch)
Stroke vertical	7 mm (0.28 inch)

Accessories Pages 170

Accessories

Ordering Information

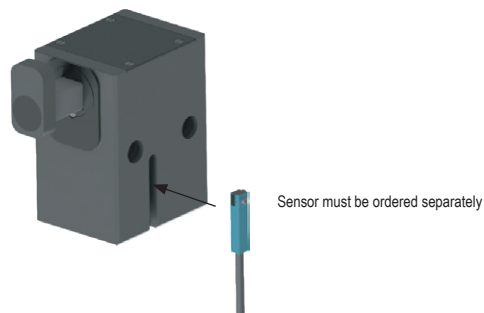
Pallet stopper **WITHOUT** preparation for proximity switch
(ATTENTION: not retrofittable)



Available Models:

WPS-A 20 WPS 20
 WPS-A-60 WPS 22
 WPS 500 WPZ 32
 WPS-F 250 WPZ 40
 WPS-F 400

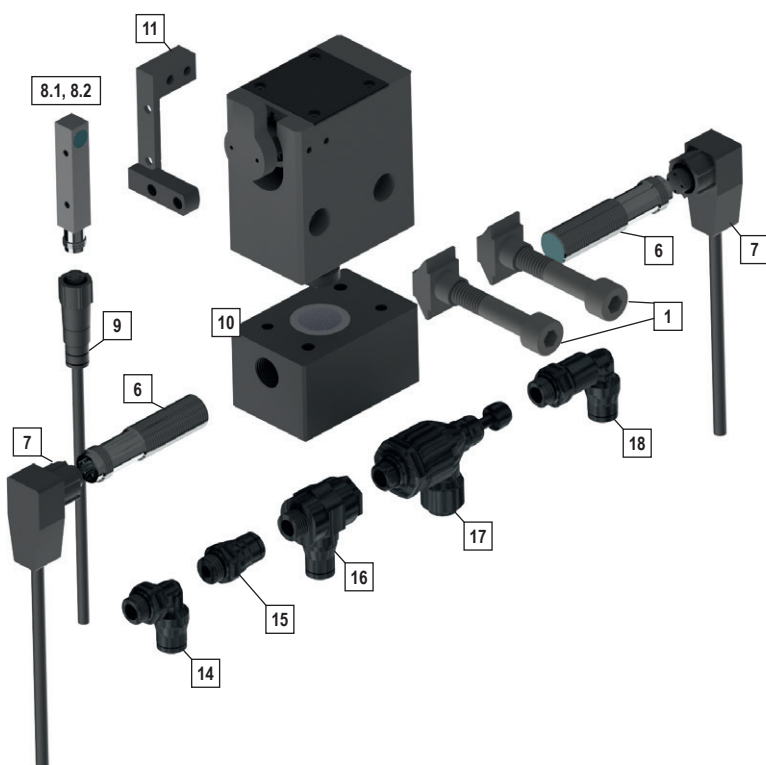
Pallet stopper **WITH** preparation for proximity switch (-NV)
(pallet stopper contains magnetic piston)



Available Models:

WPS-A 20-NV WPS-F 400-NV
 WPS-A-60-NV WPS 22-NV
 WPS 500-NV WPZ 32-NV
 WPS-F 250-NV WPZ 40-NV

WPS-A 15

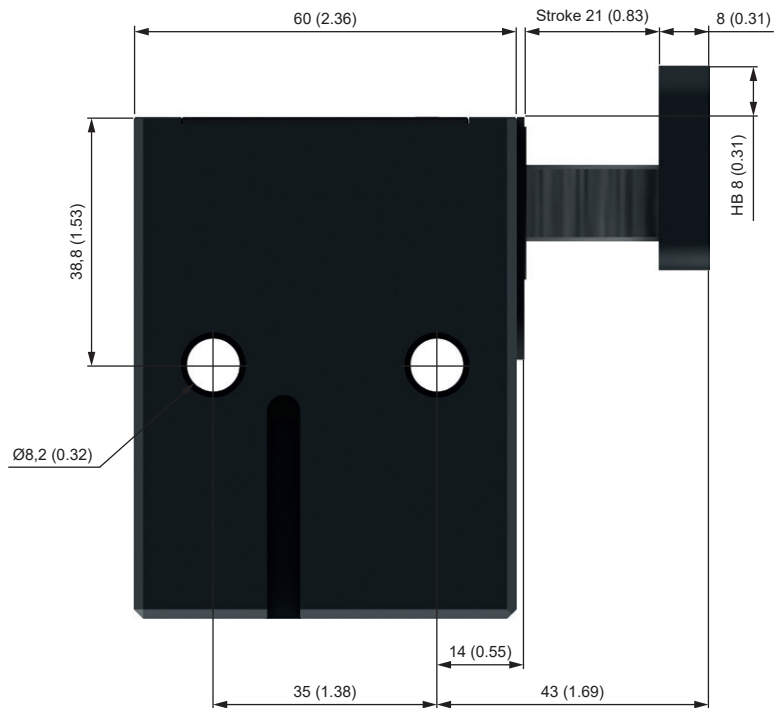
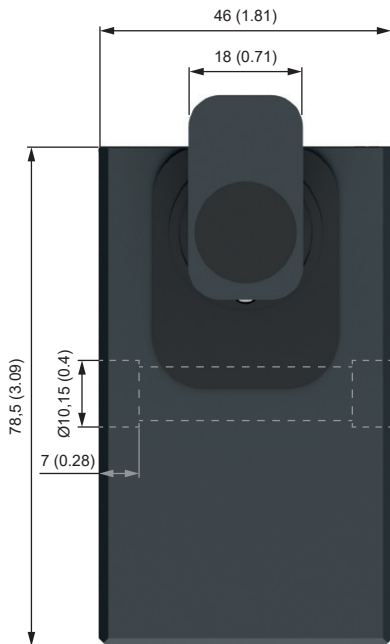


1	PSB-A15	Fastening set
6	N 20	Sensor with plug, inductiv
7	KS60	Cable with angle plug, Ø12mm
8.1	N 31	Sensor, inductiv, with plug
8.2	N 30	Sensor with cable 2,5 m, inductiv
9	KS50	Cable with plug Ø8mm
10	PSA15-15	Sensor bracket WPS-A 15
11	PSA15-16	Sensor bracket WPS-A 15
14	VW1/8-6	Stud elbow G1/8 Ø6mm Tube
15	VGR1/8-6	Male stud G1/8 Ø6mm Schlauch •Tube
16	VWS1/8-6	Single banjo G1/8 Ø6mm Tube
17	VDR1/8-6	Flow control regulator G1/8 Ø6mm Tube
18	VWL1/8-6	Stud elbo, extended G1/8 Ø6mm Tube

WPS-A 20 / WPS-A 60



- Precise deceleration and singulation of pallets
- Adjustable pneumatic deceleration with pneumatic piston return
- Masses up to 60 kg and speeds up to 50 m/min
- Housing: aluminium, black anodized, Stop: hard anodized
- Hardened stop
- Sensor for end position (optional)
- Special version: pallet stopper for clean room
Cl. 5 (ISO), Cl. 100 (US), Cl. 3 (VDI)
- RoHS compliant Directive 2002/95/EC



PERFORMANCE

	WPS-A 20	WPS-A 60
Speed	Mass kg (lbs)	Mass kg (lbs)
6 m/min	2 - 20 (4.41 - 44.1)	3 - 60 (6.61 - 132.28)
9 m/min	2 - 10 (4.41 - 22.05)	3 - 40 (6.61 - 88.18)
12 m/min	2 - 10 (4.41 - 22.05)	3 - 35 (6.61 - 77.16)
18 m/min	2 - 10 (4.41 - 22.05)	3 - 30 (6.61 - 66.14)
24 m/min	2 - 7 (4.41 - 15.43)	3 - 24 (6.61 - 52.91)
30 m/min	2 - 5 (4.41 - 11.02)	3 - 18 (6.61 - 39.68)
36 m/min	1 - 3 (2.20 - 6.61)	3 - 10 (6.61 - 22.05)
50 m/min	0,25 - 1,5 (0.55 - 3.31)	1 - 5 (2.20 - 11.02)

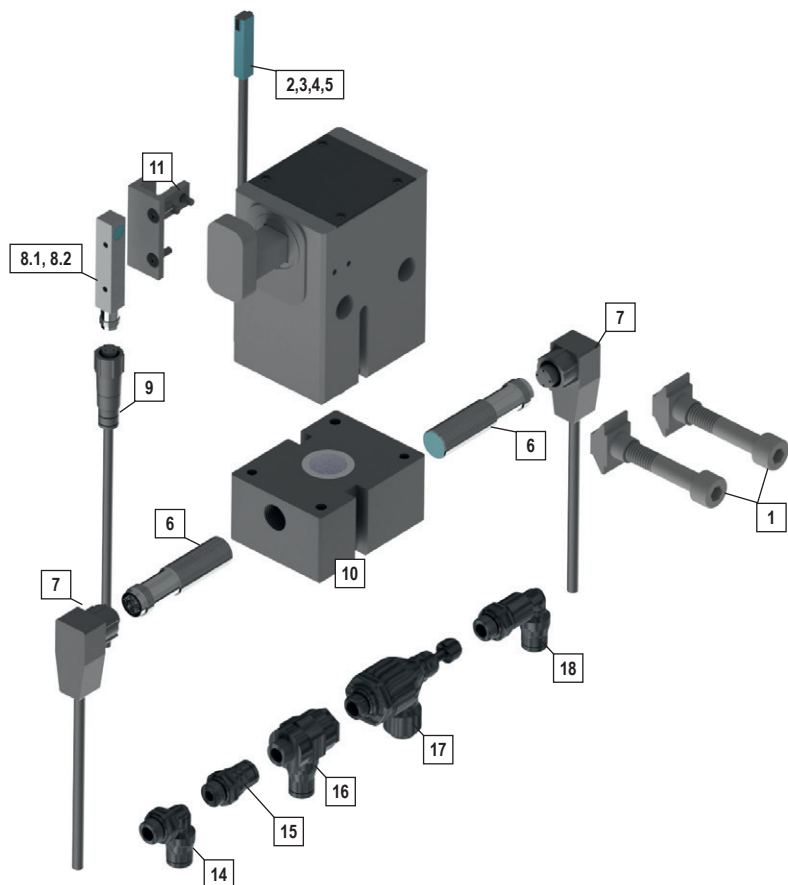
Values apply to a coefficient of friction of 0.07 μ
at a propelling force of at least 6 N (1.35 lbs).

SPECIFICATIONS

Working Pressure	4 - 8 bar (58.02 - 116.03 psi)
Compressed Air	treated
Tube Diameter	6 - 8 mm (0.24 - 0.31 inch)
Stroke horizontal	21 mm (0.83 inch)
Stroke vertical	8 mm (0.31 inch)

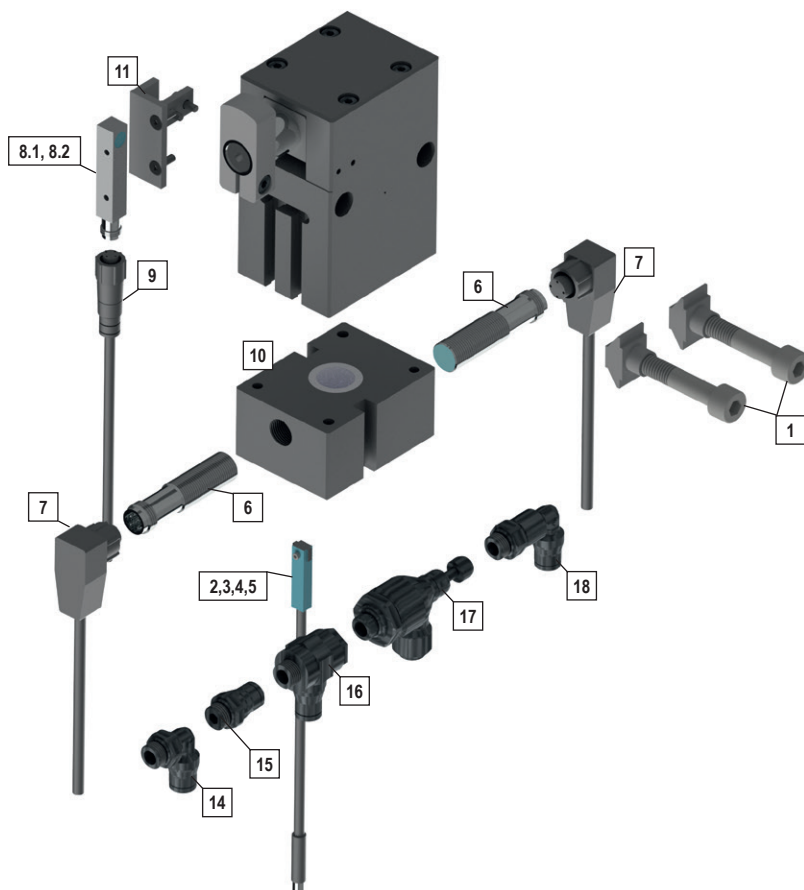
Accessories Pages 171

WPS-A 20 / 60



1	PSB-A60	Fastening set
2	N 10	Sensor, electric reed switch, 2,5 m cable
3	N 11	Sensor, electric reed switch, 5 m cable
4	N 15	Sensor with plug, electric reed switch, Ø 8mm, 0,3 m cable
5	N 16	Sensor with knurled nut, Ø 8mm electric reed switch, 0,3 m cable
6	N 20	Sensor with plug, inductiv
7	KS60	Cable with angle plug, Ø12mm
8.1	N 31	Sensor, inductiv, with plug
8.2	N 30	Sensor with cable 2,5 m, inductiv
9	KS50	m, Ø mm • Cable with plug m, Ø mm
10	PSA60-15	Sensor bracket WPS-A 20 / 60
11	PSA60-16	Sensor bracket WPS-A 20 / 60
14	WV1/8-6	Stud elbow G1/8 Ø6mm Tube
15	VGR1/8-6	Male stud G1/8 Ø6mm Tube
16	VWS1/8-6	Single banjo G1/8 Ø6mm Tube
17	VDR1/8-6	Flow control regulator G1/8 Ø6mm Tube
18	VWL1/8-6	Stud elbo, extended G1/8 Ø6mm Tube

WPS-H 200

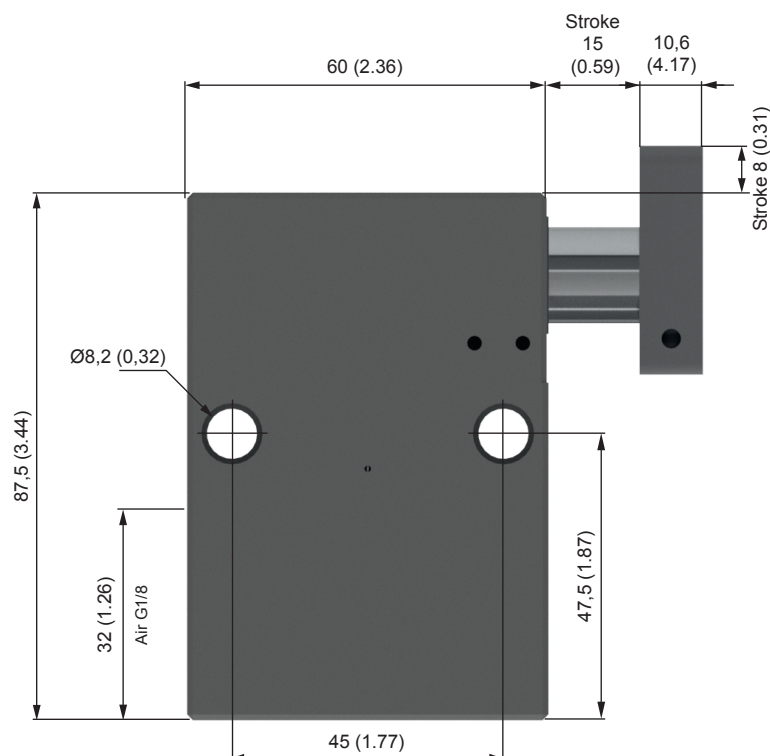
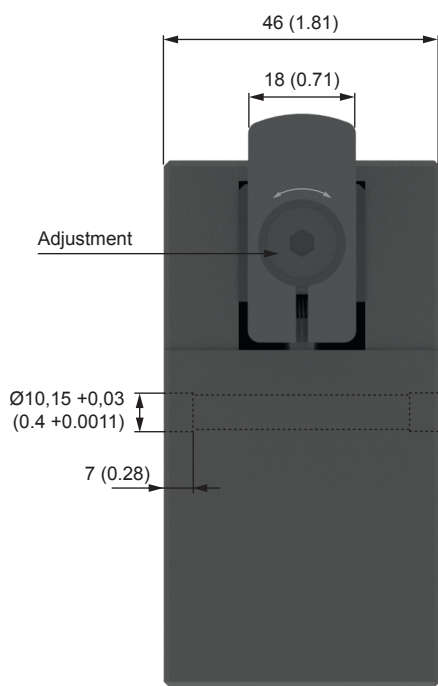


1	PSB-H200	Fastening set
2	N 10	Sensor, electric reed switch, 2,5 m cable
3	N 11	Sensor, electric reed switch, 5 m cable
4	N 15	Sensor with plug, electric reed switch, Ø 8mm, 0,3 m cable
5	N 16	Sensor with knurled nut, Ø 8mm electric reed switch, 0,3 m cable
6	N 20	Sensor with plug M12x1, inductiv
7	KS60	Cable with angle plug, Ø12mm
8.1	N 31	Sensor, inductiv, with plug
8.2	N 30	Sensor with cable 2,5 m, inductiv
9	KS50	Cable with plug Ø8mm
10	PSH2000-15	Sensor bracket WPS-H 200
11	PSH200-16	Sensor bracket WPS-H 200
14	WV1/8-6	Stud elbow G1/8 Ø6mm Tube
15	VGR1/8-6	Male stud G1/8 Ø6mm Tube
16	VWS1/8-6	Winkelschwenkanschluss • Single banjo G1/8 Ø6mm Schlauch • Tube
17	VDR1/8-6	Flow control regulator G1/8 Ø6mm Tube
18	VWL1/8-6	Stud elbo, extended G1/8 Ø6mm Tube

WPS-H200



- Precise deceleration and singulation of pallets
- Adjustable hydraulic deceleration with pneumatic piston return
- Masses up to 200 kg and speeds up to 50 m/min
- Housing: aluminium, black anodized, Stop: ProSurf
- Hardened stop
- Sensor for end position (optional)
- Special version: pallet stopper for clean room Cl. 5 (ISO), Cl. 100 (US), Cl. 3 (VDI)
- RoHS compliant Directive 2002/95/EC



PERFORMANCE

Speed	Mass kg (lbs)
6 m/min	5 - 200 (11.02 - 440.92)
9 m/min	5 - 200 (11.02 - 440.92)
12 m/min	5 - 200 (11.02 - 440.92)
18 m/min	5 - 200 (11.02 - 440.92)
24 m/min	5 - 120 (11.02 - 264.55)
30 m/min	5 - 80 (11.02 - 176.37)
36 m/min	5 - 60 (11.02 - 132.28)
50 m/min	5 - 30 (11.02 - 66.14)

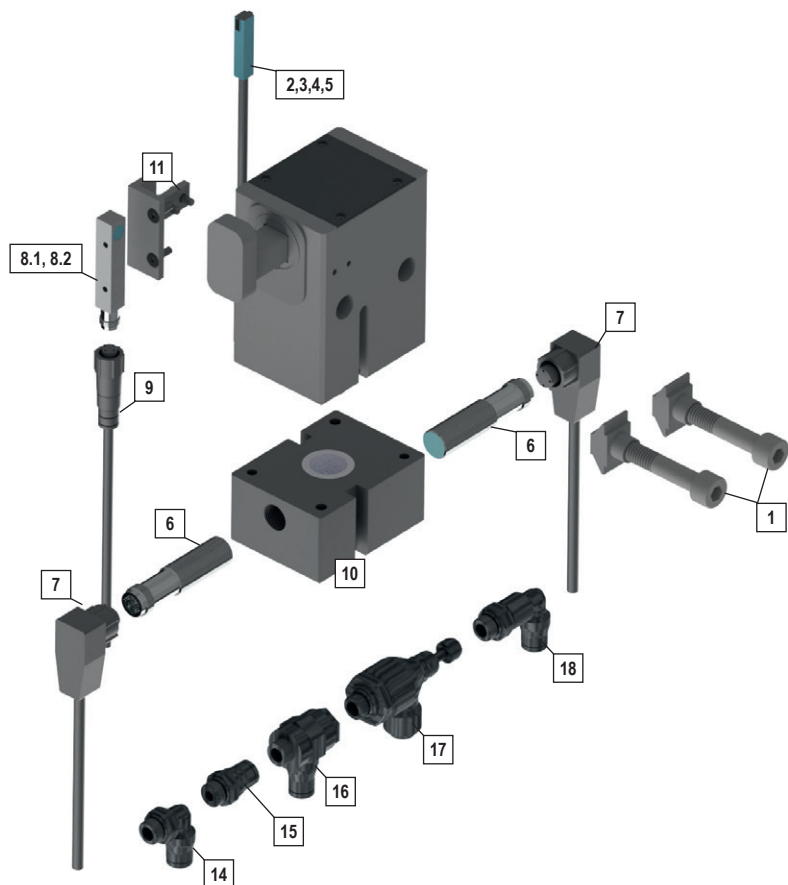
Values apply to a coefficient of friction of 0.07 μ at a propelling force of at least 6 N (1.35 lbs).

SPECIFICATIONS

Working Pressure	4 - 8 bar (58.02 - 116.03 psi)
Compressed Air	treated
Tube Diameter	6 - 8 mm (0.24 - 0.31 inch)
Stroke horizontal	15 mm (0.59 inch)
Stroke vertical	8 mm (0.31 inch)

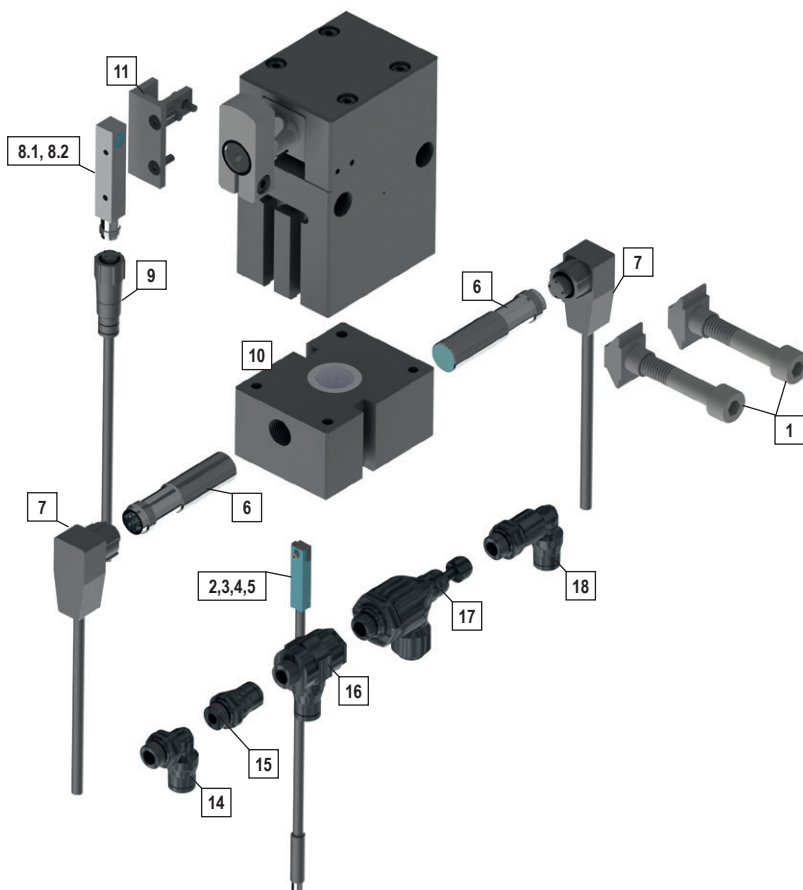
Accessories Pages 171

WPS-A 20 / 60



1	PSB-A60	Fastening set
2	N 10	Sensor, electric reed switch, 2,5 m cable
3	N 11	Sensor, electric reed switch, 5 m cable
4	N 15	Sensor with plug, electric reed switch, Ø 8mm, 0,3 m cable
5	N 16	Sensor with knurled nut, Ø 8mm electric reed switch, 0,3 m cable
6	N 20	Sensor with plug, inductiv
7	KS60	Cable with angle plug, Ø12mm
8.1	N 31	Sensor, inductiv, with plug
8.2	N 30	Sensor with cable 2,5 m, inductiv
9	KS50	m, Ø mm • Cable with plug m, Ø mm
10	PSA60-15	Sensor bracket WPS-A 20 / 60
11	PSA60-16	Sensor bracket WPS-A 20 / 60
14	WV1/8-6	Stud elbow G1/8 Ø6mm Tube
15	VGR1/8-6	Male stud G1/8 Ø6mm Tube
16	VWS1/8-6	Single banjo G1/8 Ø6mm Tube
17	VDR1/8-6	Flow control regulator G1/8 Ø6mm Tube
18	VWL1/8-6	Stud elbo, extended G1/8 Ø6mm Tube

WPS-H 200



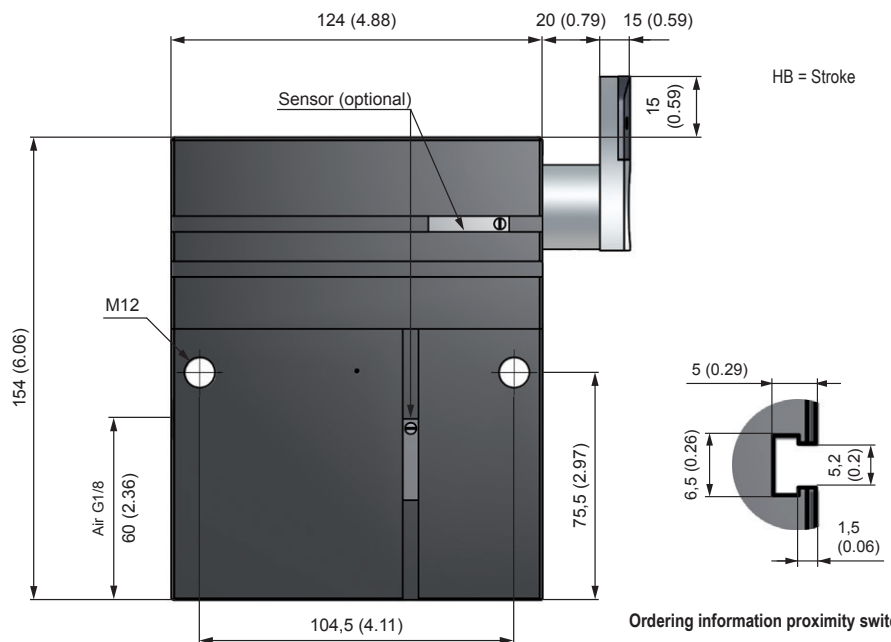
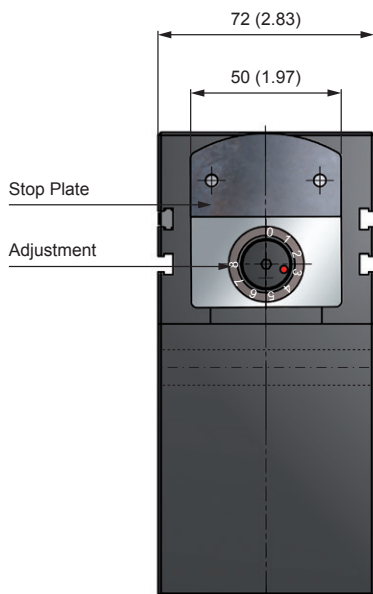
1	PSB-H200	Fastening set
2	N 10	Sensor, electric reed switch, 2,5 m cable
3	N 11	Sensor, electric reed switch, 5 m cable
4	N 15	Sensor with plug, electric reed switch, Ø 8mm, 0,3 m cable
5	N 16	Sensor with knurled nut, Ø 8mm electric reed switch, 0,3 m cable
6	N 20	Sensor with plug M12x1, inductiv
7	KS60	Cable with angle plug, Ø12mm
8.1	N 31	Sensor, inductiv, with plug
8.2	N 30	Sensor with cable 2,5 m, inductiv
9	KS50	Cable with plug Ø8mm
10	PSH2000-15	Sensor bracket WPS-H 200
11	PSH200-16	Sensor bracket WPS-H 200
14	WV1/8-6	Stud elbow G1/8 Ø6mm Tube
15	VGR1/8-6	Male stud G1/8 Ø6mm Tube
16	VWS1/8-6	Winkelschwenkanschluss • Single banjo G1/8 Ø6mm Schlauch • Tube
17	VDR1/8-6	Flow control regulator G1/8 Ø6mm Tube
18	VWL1/8-6	Stud elbo, extended G1/8 Ø6mm Tube

Pallet Stopper

WPS 500



- Precise deceleration and singulation of pallets
- Adjustable hydraulic deceleration with pneumatic piston return
- Masses up to 1.200 kg and speeds up to 40 m/min
- Housing: aluminium, black anodized, Stop: nickel plated
- Hardened stop
- Sensor for end position (optional)
- Special version: pallet stopper for clean room Cl. 5 (ISO), Cl. 100 (US), Cl. 3 (VDI)
- RoHS compliant Directive 2002/95/EC



Ordering information proximity switch

Standard version: without preparation for proximity switch (e.g. WPS 500)
 "NV" Version: with preparation for proximity switch (e.g. WPS 500-NV)

Accessories Pages 172

PERFORMANCE

Speed	Mass kg (lbs)
6 m/min	7 - 1200 (15.43 - 2645.55)
9 m/min	7 - 1200 (15.43 - 2645.55)
12 m/min	7 - 1200 (15.43 - 2645.55)
18 m/min	7 - 1200 (15.43 - 2645.55)
24 m/min	7 - 1000 (15.43 - 2204.62)
30 m/min	7 - 600 (15.43 - 1322.77)
40 m/min	7 - 300 (15.43 - 661.39)

Values apply to a coefficient of friction of 0.07 μ at a propelling force of at least 35 N (7.87 lbs).

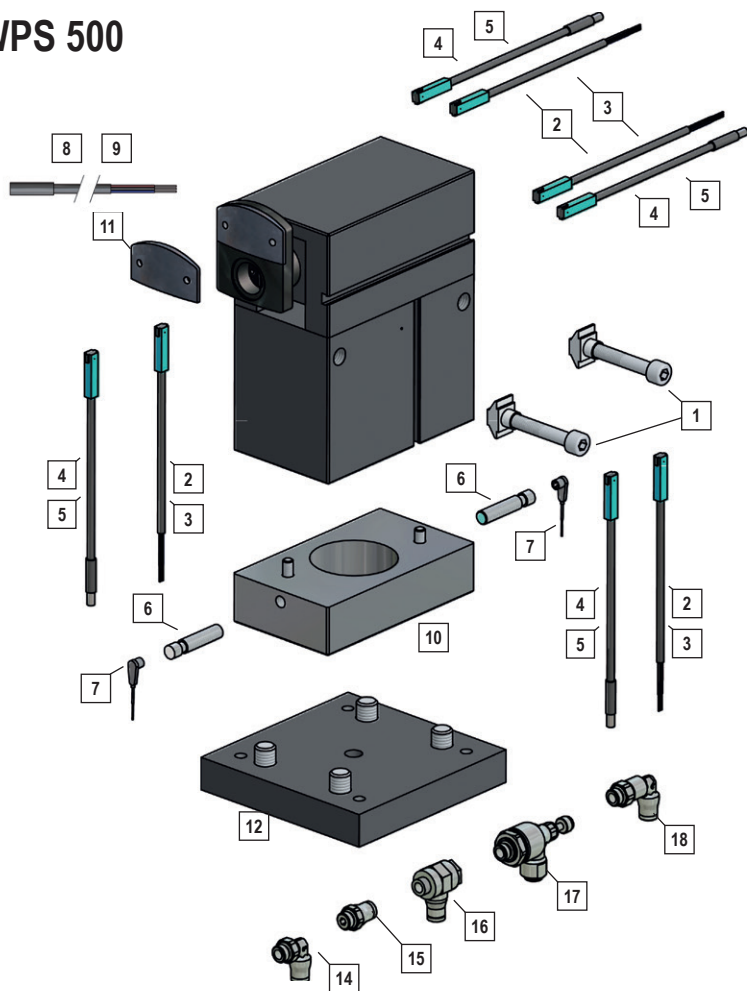
Values apply to a coefficient of friction of 0.1 μ .

SPECIFICATIONS

Working Pressure	4 - 8 bar (58.02 - 116.03 psi)
Compressed Air	treated
Tube Diameter	6 - 8 mm (0.24 - 0.31 inch)
Stroke horizontal:	20 mm
Stroke vertical:	15 mm (0.59 inch)
Weight	3,8 kg

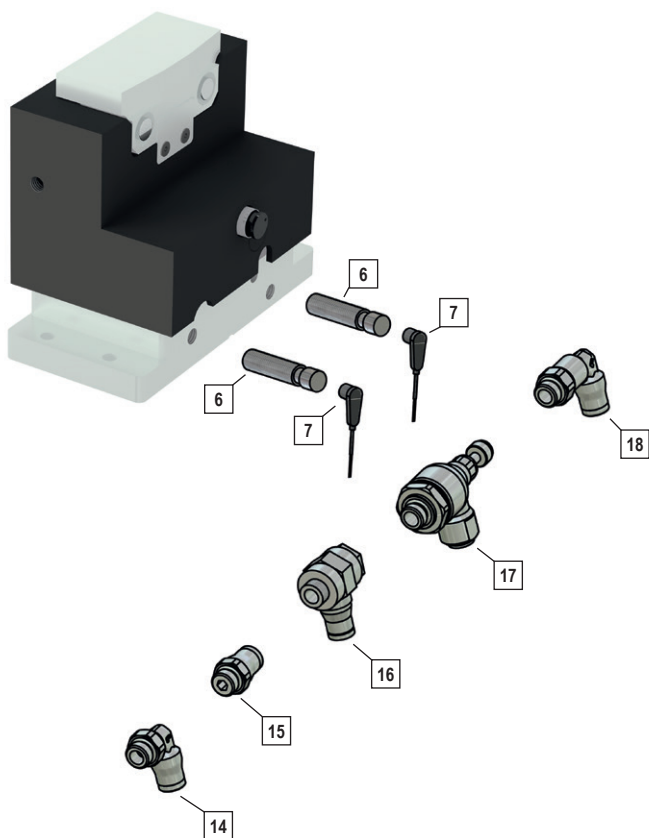
Accessories

WPS 500



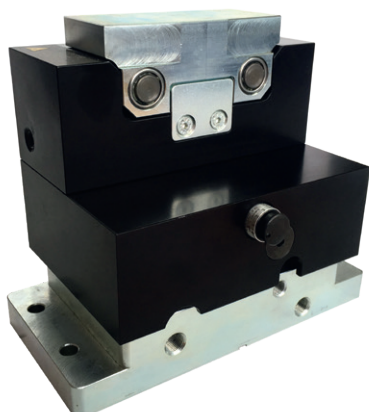
1	PSB 500	Fastening set
2	N 10	Sensor, electric reed switch, 2,5 m cable
3	N 11	Sensor, electric reed switch, 5 m cable
4	N 15	Sensor with plug, electric reed switch, Ø 8mm, 0,3 m cable
5	N 16	Sensor with knurled nut, Ø 8mm electric reed switch, 0,3 m cable
6	N 20	Sensor, inductiv
7	KS 60	Kabel mit Stecker, Ø 8mm • Cable with plug, Ø 8mm
8	KS 25	Cable with plug 2,5 m, Ø 8mm
9	KS 50	Cable with plug 5 m, Ø 8mm
10	PS500-15	Position sensing WPS-500, top and bottom
11	PS500-1	Stop plate, steel, hardened (for replacement)
12	PS514	Mounting flange
14	VW1/8-6	G1/8-6 Stud elbow
14	VW1/8-8	G1/8-8 Stud elbow
15	VGR1/8-6	G1/8-6 Male stud
15	VGR1/8-8	G1/8-8 Male stud
16	VWS1/8-6	G1/8-6 Single banjo
16	VWS1/8-8	G1/8-8 Single banjo
17	VDR1/8-6	G1/8-6 Flow control regulator
17	VDR1/8-8	G1/8-8 Flow control regulator
18	VWL1/8-6	G1/8-6 Stud elbo, extended
18	VWL1/8-8	G1/8-8 Stud elbo, extended

WPS 600



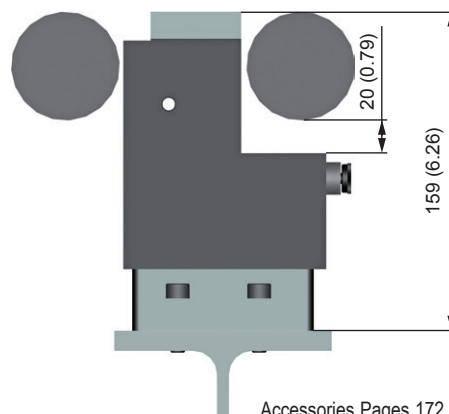
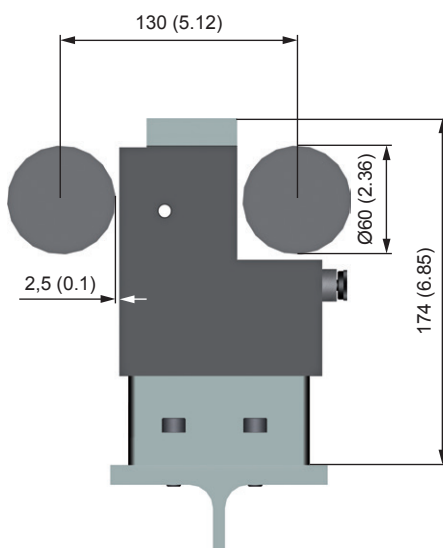
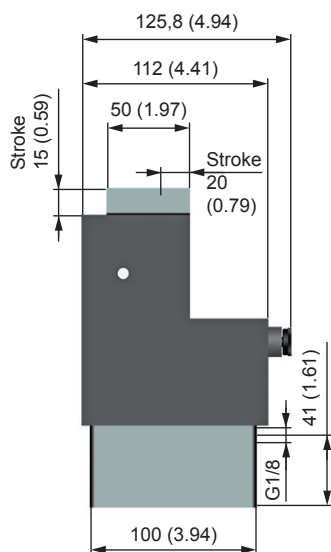
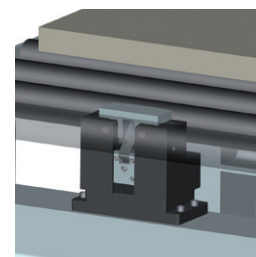
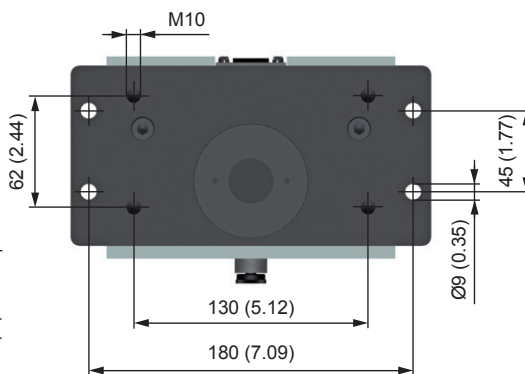
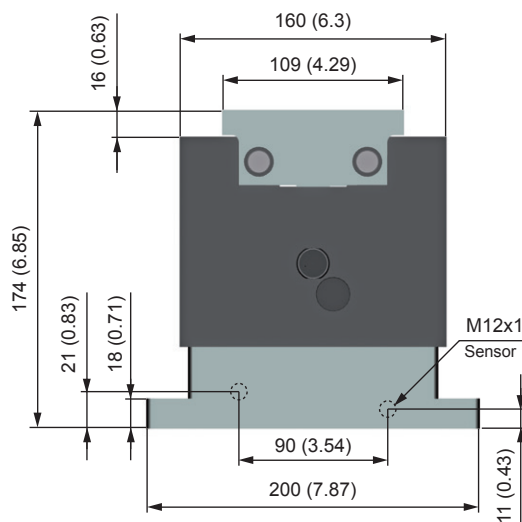
6	N 20	Sensor, inductiv
7	KS 60	Cable with plug, Ø 8mm
14	VWIM5-6	M5-6 Stud elbow
15	VGRM5-6	M5-6 Male stud
16	VWSM5-6	M5-6 Single banjo
17	VDRM5-6	M5-6 Flow control regulator
18	VVLM5-6	M5-6 Stud elbo, extended

WPS 600



- Design for rolling conveyor systems
- Smooth braking through the adjustable hydraulic shock absorbers
- Masses up to 1200 kg and speeds up to 30 m/min

- Precise deceleration and separation of pallets
- Housing: aluminium, black anodized
- Stop: hardened, nickel-plated
- Single acting
- Proximity switch for detecting lower and upper position (optional)
- Special version: pallet stopper for clean room Cl. 5 (ISO), Cl. 100 (US), Cl. 3 (VDI)
- RoHS compliant Directive 2002/95/EC



Accessories Pages 172

PERFORMANCE

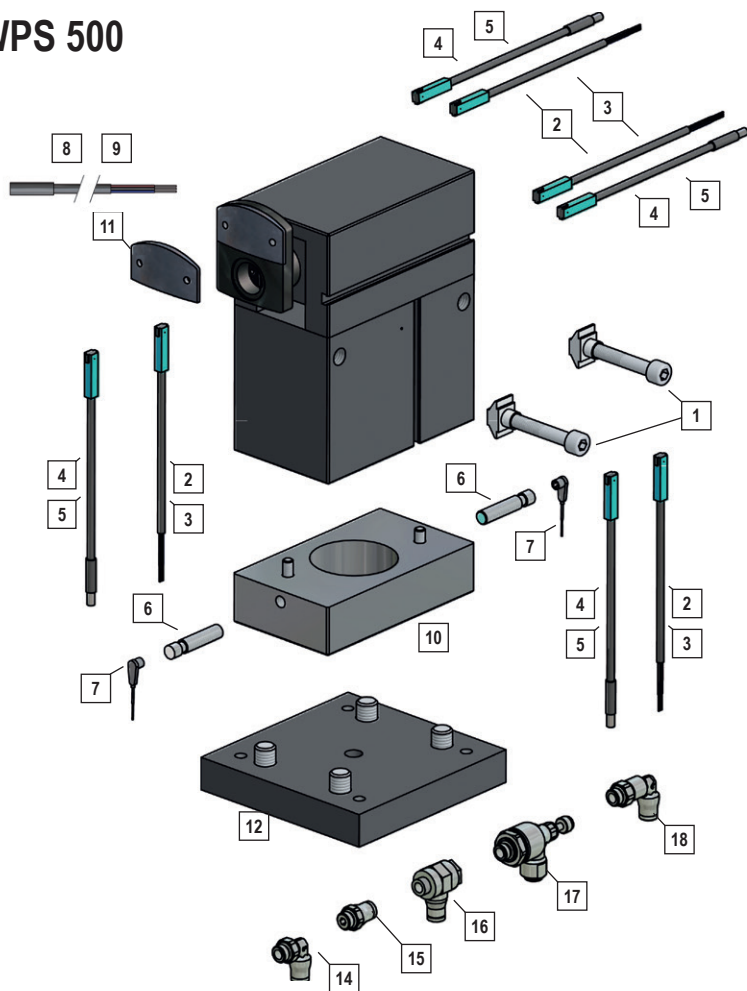
Speed	Mass kg (lbs)	Speed	Mass kg (lbs)
6 m/min	50 - 1200 (110.23 - 2645.55)	18 m/min	50 - 800 (110.23 - 1763.7)
9 m/min	50 - 1000 (110.23 - 2204.62)	24 m/min	30 - 400 (66.14 - 881.85)
12 m/min	50 - 1000 (110.23 - 2204.62)	30 m/min	30 - 250 (66.14 - 551.16)

SPECIFICATIONS

Working Pressure	4 - 8 bar (58.02 - 116.03 psi)
Compressed Air	treated
Tube Diameter	6 - 8 mm (0.24 - 0.31 inch)
Weight	7,4 kg (16.31 lbs)

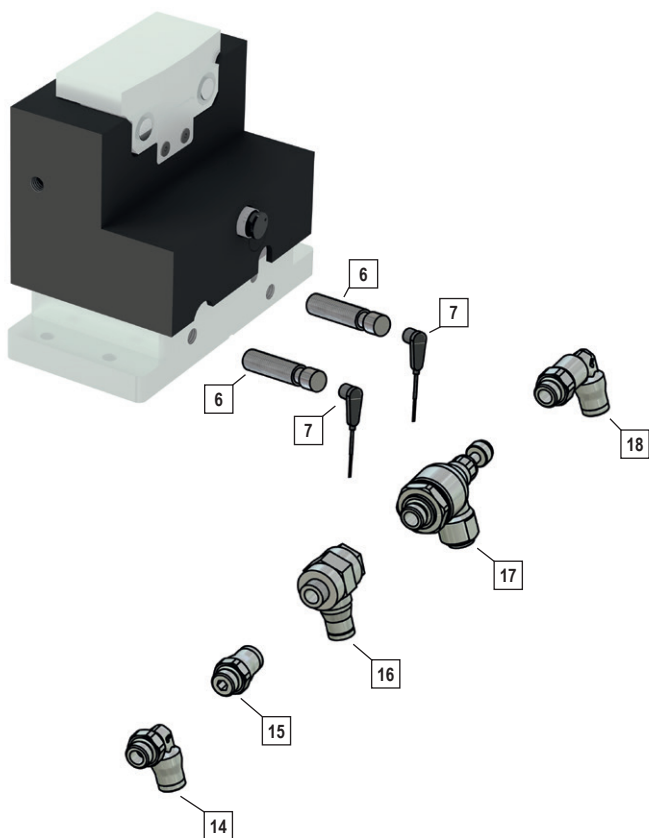
Accessories

WPS 500



1	PSB 500	Fastening set
2	N 10	Sensor, electric reed switch, 2,5 m cable
3	N 11	Sensor, electric reed switch, 5 m cable
4	N 15	Sensor with plug, electric reed switch, Ø 8mm, 0,3 m cable
5	N 16	Sensor with knurled nut, Ø 8mm electric reed switch, 0,3 m cable
6	N 20	Sensor, inductiv
7	KS 60	Kabel mit Stecker, Ø 8mm • Cable with plug, Ø 8mm
8	KS 25	Cable with plug 2,5 m, Ø 8mm
9	KS 50	Cable with plug 5 m, Ø 8mm
10	PS500-15	Position sensing WPS-500, top and bottom
11	PS500-1	Stop plate, steel, hardened (for replacement)
12	PS514	Mounting flange
14	VW1/8-6	G1/8-6 Stud elbow
14	VW1/8-8	G1/8-8 Stud elbow
15	VGR1/8-6	G1/8-6 Male stud
15	VGR1/8-8	G1/8-8 Male stud
16	VWS1/8-6	G1/8-6 Single banjo
16	VWS1/8-8	G1/8-8 Single banjo
17	VDR1/8-6	G1/8-6 Flow control regulator
17	VDR1/8-8	G1/8-8 Flow control regulator
18	VWL1/8-6	G1/8-6 Stud elbo, extended
18	VWL1/8-8	G1/8-8 Stud elbo, extended

WPS 600

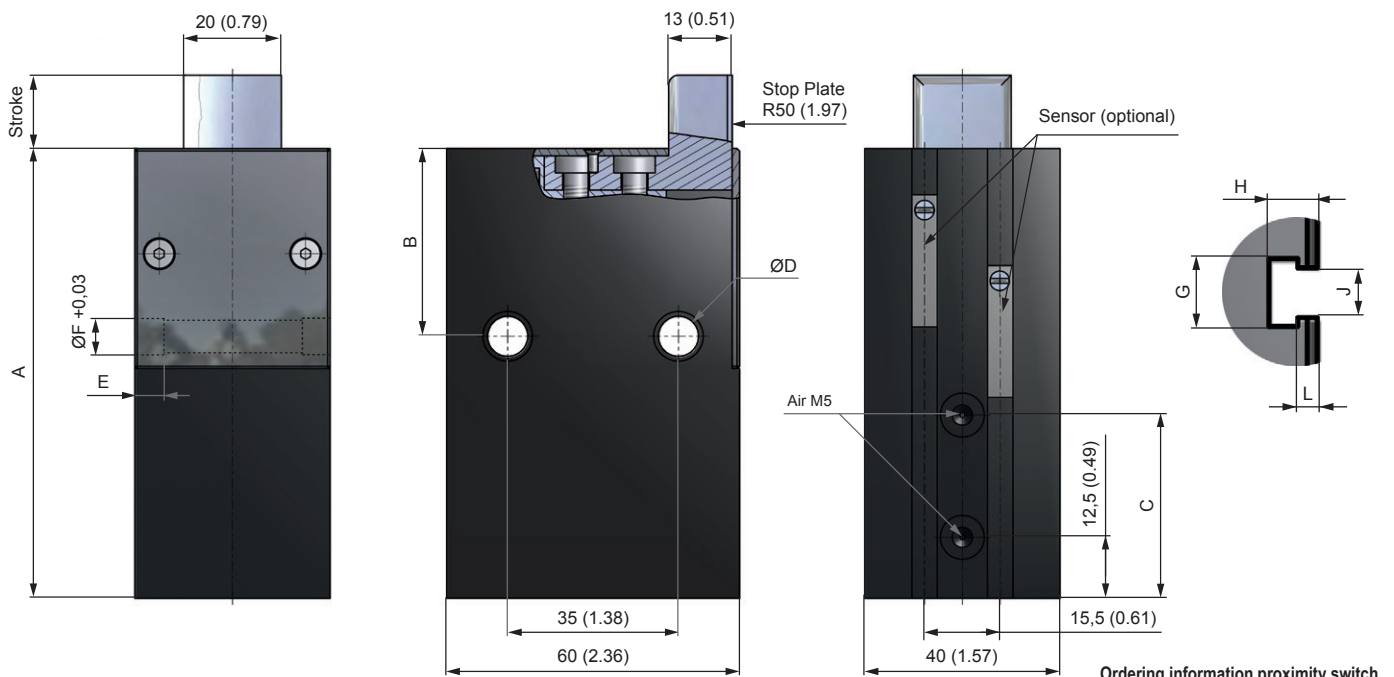


6	N 20	Sensor, inductiv
7	KS 60	Cable with plug, Ø 8mm
14	VWIM5-6	M5-6 Stud elbow
15	VGRM5-6	M5-6 Male stud
16	VWSM5-6	M5-6 Single banjo
17	VDRM5-6	M5-6 Flow control regulator
18	VVLM5-6	M5-6 Stud elbo, extended

WPS-F 250



- Precise deceleration and separation of pallets
- Masses up to 450 kg and speeds up to 40 m/min
- Single acting: via return spring
- Double acting (optional): pneumatic return
- Housing: aluminium, black anodized
- Hardened stop, (Plastic stop for low masses, optional)
- Sensor for end position (optional)
- Special models: pallet stopper for clean room
Cl. 5 (ISO), Cl. 100 (US), Cl. 3 (VDI)
- RoHS compliant Directive 2002/95/EC



Ordering information proximity switch

Standard version: without preparation for proximity switch (e.g. WPS-F 250-9)
 "NV" Version: with preparation for proximity switch (e.g. WPS-F 250-9-NV)

DIMENSIONS

	Stroke vertical	A	B	C	ØD	E	ØF	G	H	J	L	Weight
	mm (inch)											kg
WPS-F 250-9	9 (0.35)	78 (3.07)	38,5 (1.52)	32,9 (1.3)	8,2 (0.32)	5,2 (0.2)	10,15 (0.4)	6,5 (0.26)	5 (0.2)	5,2 (0.2)	1,5 (0.06)	0,55 (1.21)
WPS-F 250-15	15 (0.59)	92 (3.62)	38,5 (1.52)	41,8 (1.65)	8,2 (0.32)	5,2 (0.2)	10,15 (0.4)	6,5 (0.26)	5 (0.2)	5,2 (0.2)	1,5 (0.06)	0,65 (1.43)
WPS-F 250-25	25 (0.98)	108 (4.25)	50 (1.97)	51,8 (2.04)	8,2 (0.32)	5,2 (0.2)	10,15 (0.4)	6,5 (0.26)	5 (0.2)	5,2 (0.2)	1,5 (0.06)	0,8 (1.76)

PERFORMANCE

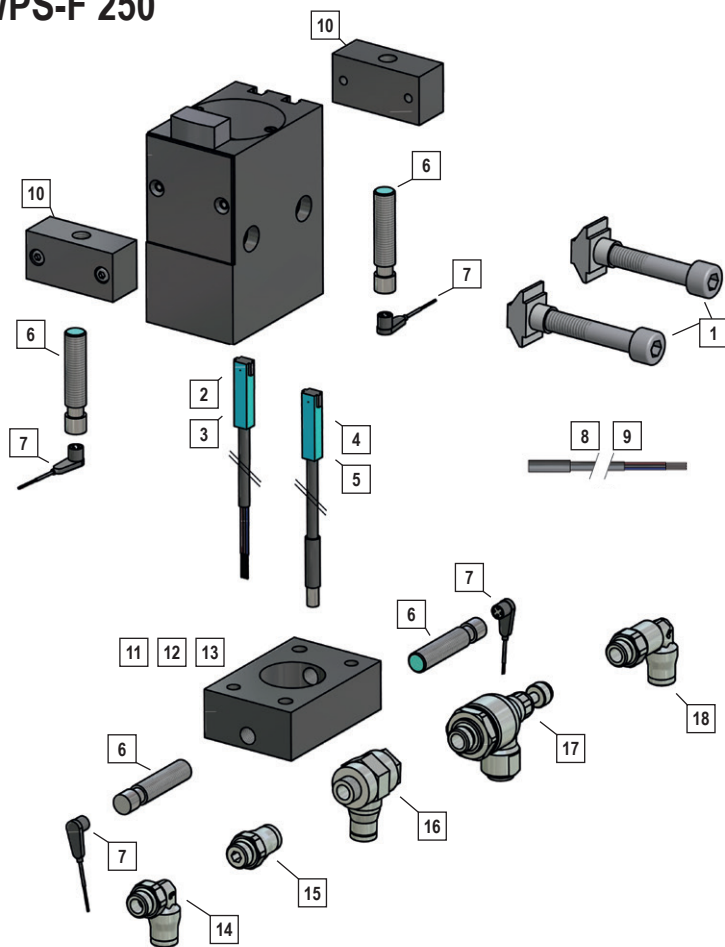
Speed	Mass kg (lbs)	Speed	Mass kg (lbs)
6 m/min	450 (992.08)	24 m/min	130 (286.6)
9 m/min	350 (771.62)	30 m/min	70 (154.32)
12 m/min	280 (617.29)	40 m/min	50 (110.23)
18 m/min	230 (507.06)		

SPECIFICATIONS

Working Pressure	4 - 8 bar (58.02 - 116.03 psi)
Compressed Air	treated
Tube Diameter	6 - 8 mm (0.24 - 0.31 inch)

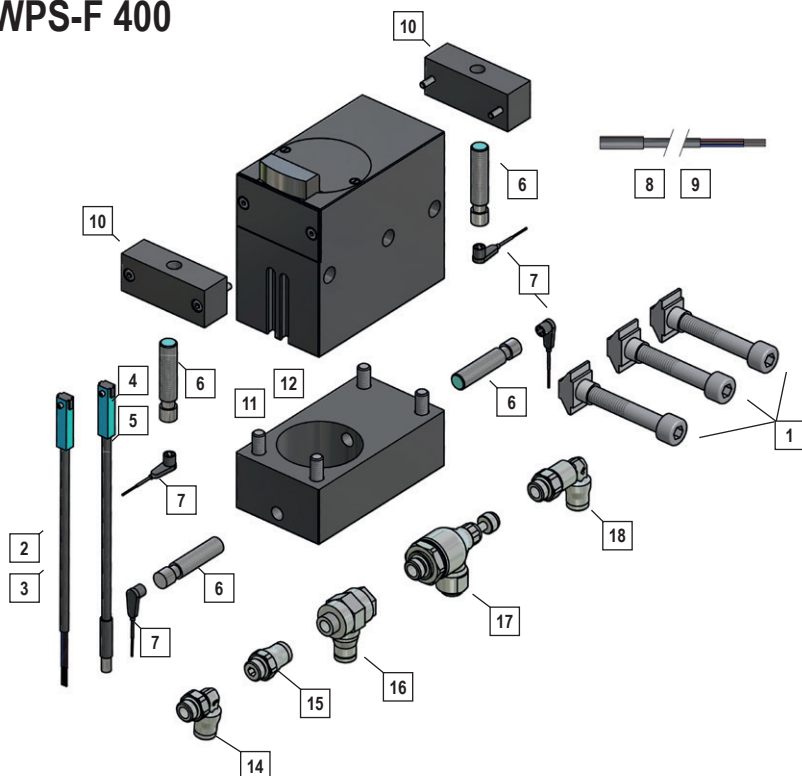
Accessories Pages 173

WPS-F 250



1	PSFB 250	Fastening set
2	N 10	Sensor, electric reed switch, 2,5 m cable
3	N 11	Sensor, electric reed switch, 5 m cable
4	N 15	Sensor with plug, electric reed switch, Ø 8mm, 0,3 m cable
5	N 16	Sensor with knurled nut, Ø 8mm electric reed switch, 0,3 m cable
6	N 20	Sensor, inductiv
7	KS 60	Cable with plug, Ø 8mm
8	KS 25	Cable with plug 2,5 m, Ø 8mm
9	KS 50	Cable with plug 5 m, Ø 8mm
10	F 250-14	Mounting flange for sensor
11	F250-9-15	Position sensing WPS-F250-9, top and bottom
12	F250-15-15	Position sensing WPS-F250-15, top and bottom
13	F250-25-15	Position sensing WPS-F250-25, top and bottom
14	VWIM5-6	M5-6 Stud elbow
15	VGRM5-6	M5-6 Male stud
16	VWSM5-6	M5-6 Single banjo
17	VDRM5-6	M5-6 Flow control regulator
18	VWLM5-6	M5-6 Stud elbo, extended

WPS-F 400

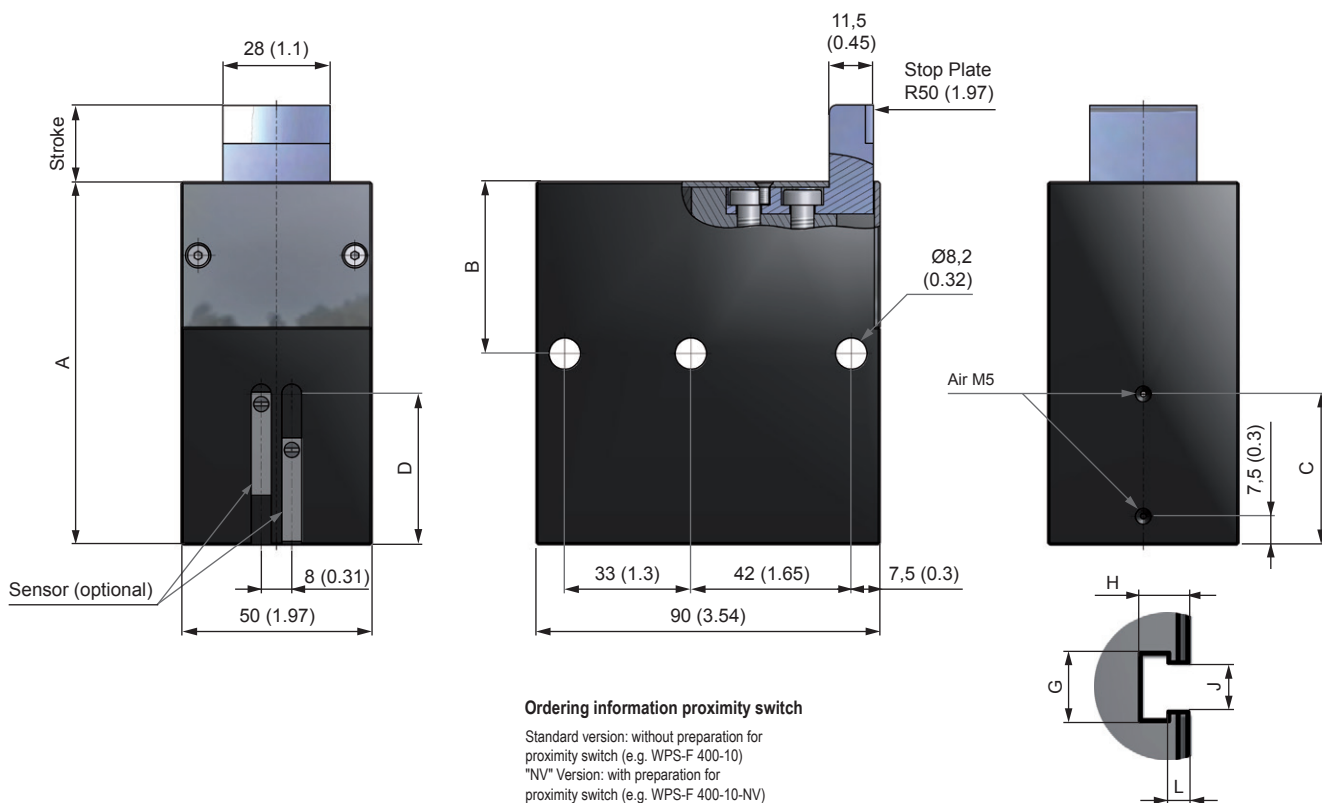


1	PSFB 400	Fastening set
2	N 10	Sensor, electric reed switch, 2,5 m cable
3	N 11	Sensor, electric reed switch, 5 m cable
4	N 15	Sensor with plug, electric reed switch, Ø 8mm, 0,3 m cable
5	N 16	Sensor with knurled nut, Ø 8mm electric reed switch, 0,3 m cable
6	N 20	Sensor, inductiv
7	KS 60	Cable with plug, Ø 8mm
8	KS 25	Cable with plug 2,5 m, Ø 8mm
9	KS 50	Cable with plug 5 m, Ø 8mm
10	F 400-14	Mounting flange for sensor
11	F400-10-15	Position sensing WPS-F400-10, top and bottom
12	F400-20-15	Position sensing WPS-F400-20, top and bottom
14	VWIM5-6	M5-6 Stud elbow
15	VGRM5-6	M5-6 Male stud
16	VWSM5-6	M5-6 Single banjo
17	VDRM5-6	M5-6 Flow control regulator
18	VWLM5-6	M5-6 Stud elbo, extended

WPS-F 400



- Precise deceleration and separation of pallets
- Masses up to 850 kg and speeds up to 40 m/min
- Single acting: via return spring
- Double acting (optional): pneumatic return
- Housing: aluminium, black anodized
- Hardened stop
- Sensor for end position (optional)
- Special version: pallet stopper for clean room Cl. 5 (ISO), Cl. 100 (US), Cl. 3 (VDI)
- RoHS compliant Directive 2002/95/EC



DIMENSIONS

	Stroke vertical	A	B	C	D	G	H	J	L	Weight
	mm (inch)									kg
WPS-F 400-10	10 (0.39)	80 (3.15)	38,5 (1.52)	33,5 (1.32)	34,5 (1.36)	6,5 (0.26)	5 (0.2)	5,2 (0.2)	1,5 (0.06)	1,1 (2.436)
WPS-F 400-20	20 (0.79)	95 (3.74)	45 (1.77)	39,5 (1.56)	42 (1.65)	6,5 (0.26)	5 (0.2)	5,2 (0.2)	1,5 (0.06)	1,3 (2.88)

PERFORMANCE

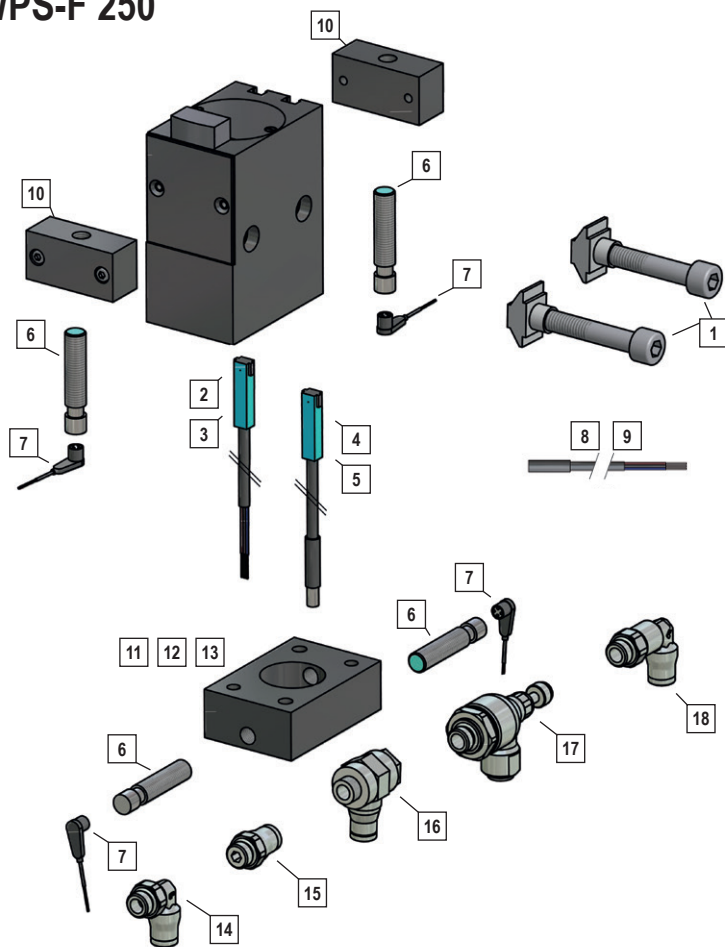
Speed	Mass kg (lbs)	Speed	Mass kg (lbs)
6 m/min	850 (1873.93)	24 m/min	500 (1102.31)
9 m/min	850 (1873.93)	30 m/min	300 (661.39)
12 m/min	850 (1873.93)	40 m/min	220 (485.02)
18 m/min	850 (1873.93)		

SPECIFICATIONS

Working Pressure	4 - 8 bar (58.02 - 116.03 psi)
Compressed Air	treated
Tube Diameter	6 - 8 mm (0.24 - 0.31 inch)

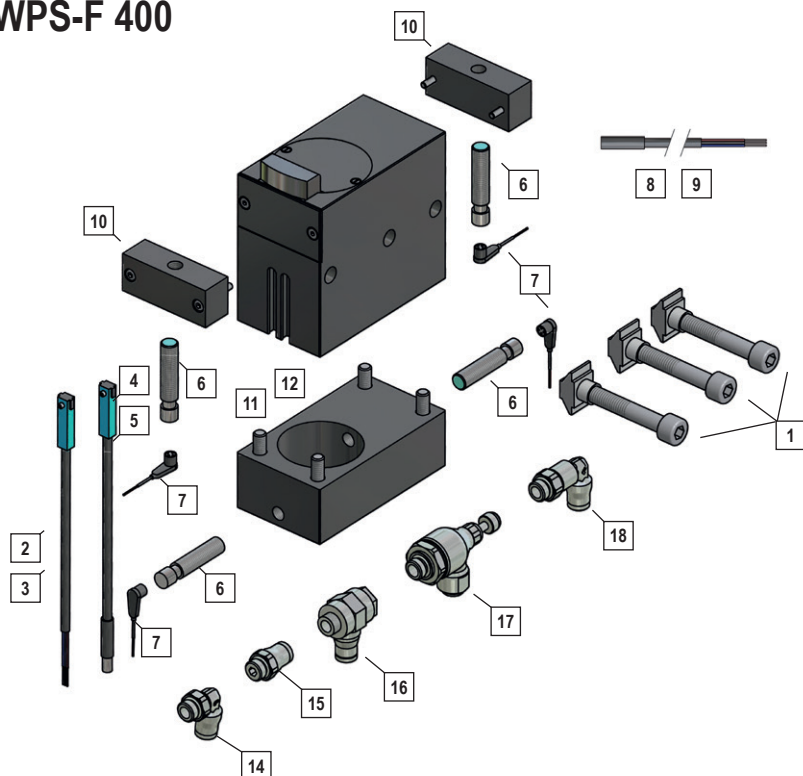
Accessories Pages 173

WPS-F 250



1	PSFB 250	Fastening set
2	N 10	Sensor, electric reed switch, 2,5 m cable
3	N 11	Sensor, electric reed switch, 5 m cable
4	N 15	Sensor with plug, electric reed switch, Ø 8mm, 0,3 m cable
5	N 16	Sensor with knurled nut, Ø 8mm electric reed switch, 0,3 m cable
6	N 20	Sensor, inductiv
7	KS 60	Cable with plug, Ø 8mm
8	KS 25	Cable with plug 2,5 m, Ø 8mm
9	KS 50	Cable with plug 5 m, Ø 8mm
10	F 250-14	Mounting flange for sensor
11	F250-9-15	Position sensing WPS-F250-9, top and bottom
12	F250-15-15	Position sensing WPS-F250-15, top and bottom
13	F250-25-15	Position sensing WPS-F250-25, top and bottom
14	VWIM5-6	M5-6 Stud elbow
15	VGRM5-6	M5-6 Male stud
16	VWSM5-6	M5-6 Single banjo
17	VDRM5-6	M5-6 Flow control regulator
18	VWLM5-6	M5-6 Stud elbo, extended

WPS-F 400



1	PSFB 400	Fastening set
2	N 10	Sensor, electric reed switch, 2,5 m cable
3	N 11	Sensor, electric reed switch, 5 m cable
4	N 15	Sensor with plug, electric reed switch, Ø 8mm, 0,3 m cable
5	N 16	Sensor with knurled nut, Ø 8mm electric reed switch, 0,3 m cable
6	N 20	Sensor, inductiv
7	KS 60	Cable with plug, Ø 8mm
8	KS 25	Cable with plug 2,5 m, Ø 8mm
9	KS 50	Cable with plug 5 m, Ø 8mm
10	F 400-14	Mounting flange for sensor
11	F400-10-15	Position sensing WPS-F400-10, top and bottom
12	F400-20-15	Position sensing WPS-F400-20, top and bottom
14	VWIM5-6	M5-6 Stud elbow
15	VGRM5-6	M5-6 Male stud
16	VWSM5-6	M5-6 Single banjo
17	VDRM5-6	M5-6 Flow control regulator
18	VWLM5-6	M5-6 Stud elbo, extended