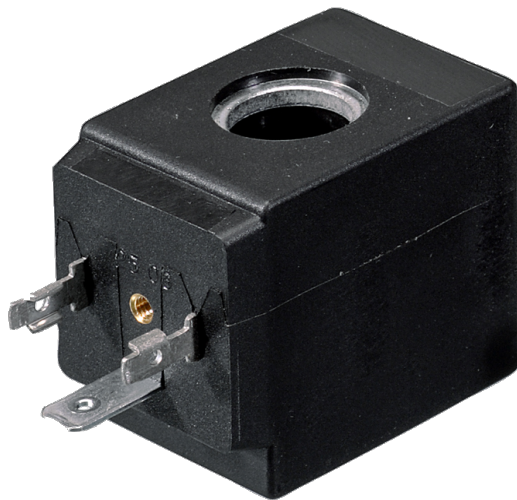


2 Series Coils



800.909.4988
info@rankinusa.com

RANKIN 
COMPONENTS THAT AUTOMATE

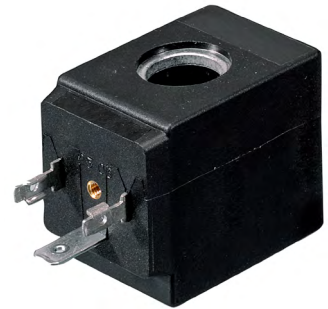
DESCRIPTION

Encapsulated coil incorporating the magnetic circuit.
Fixing by means of a central nut.

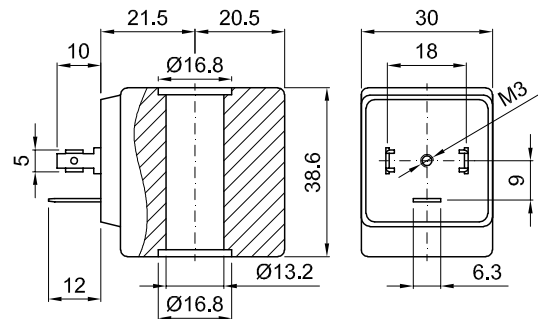
Electrical connection according to DIN 43650 A
(A EN 175301-803 ISO 4400)

CONSTRUCTION

Class F encapsulation	Fibre-glass Nylon
Class H	Fibre-glass Polyarylamide
Magnetic circuit	Zinc-plated steel
Windings	Copper covered with class H insulation
Ambient temperature:	class F -10°C +55°C
	class H -10°C +80°C
	UL coils -10°C +60°C



OPTIONS: Electrical connection through cable
Special powers and voltages
Self-extinguish



CODE		Alternating Current Voltage	Direct Current Voltage	Power ①		Voltage tolerance		Connector	Service ED
Class F insulation	Class H insulation			Alternating Current (VA)	Direct Current (W)	Alternating current	Direct current		
20A	22A	12V 50/60Hz	-	15	-	+15%	-	10349000	100%
20B	22B	24V 50/60Hz	-						
20C	22C	48V 50/60Hz	-						
20D	22D	110V 50/60Hz	-						
20E	22E	220/230V 50/60Hz	-						
20F	22F	240V 50/60Hz	-						
20G	22G	380V 50/60Hz	-						
200	220	-	12	-	10	-	±10%	10349000	100%
201	221	-	24						
202	222	-	48						

8

Certified versions **CE** **UL** **US**

NOTE: The performance with UL coil could be different. Please contact the manufacturer for any further information.

-	U25B	24V 60Hz	-	15	-	±10%	-	10349000	100%
-	U25D	120V 60Hz	-						
-	U25F	240V 60Hz	-						
-	U250	-	12	-	10	-	±10%	10349000	100%
-	U251	-	24						

① Considering nominal voltage and an ambient temperature of 20°C