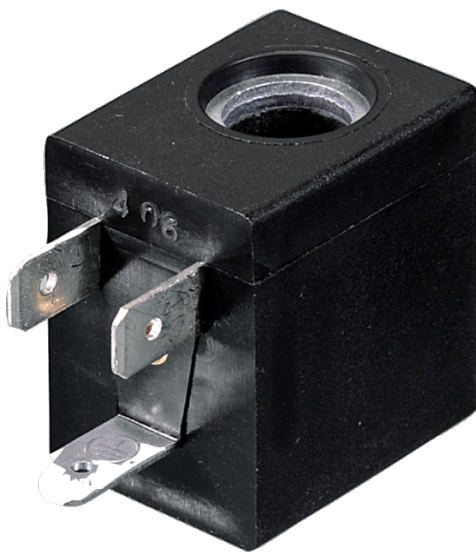


3 Series Coils

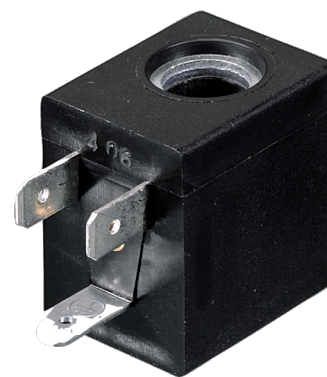


800.909.4988
info@rankinusa.com

RANKIN 
COMPONENTS THAT AUTOMATE

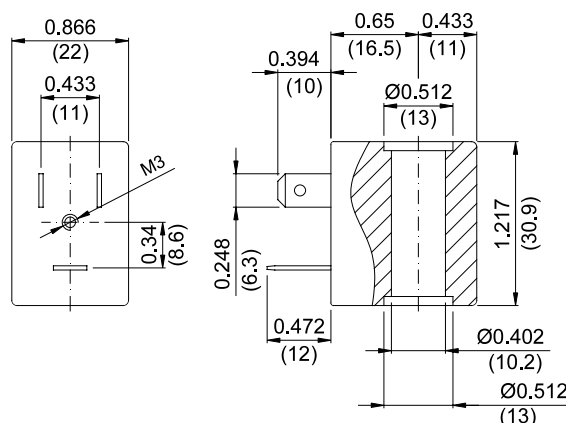
DESCRIPTION

Encapsulated coil incorporating the magnetic circuit.
 Fixing by means of a central nut.
 Electrical connection according to DIN 43650 B
 (B Industrial connection)



CONSTRUCTION

Encapsulation:
 Class F Fibre-glass Nylon
 Class H Fibre-glass Polyarylamide
 Magnetic circuit Zinc-plated steel
 Windings Copper covered with class H insulation
 Ambient temperature: class F +14°F +131°F
 class H +14°F +176°F
 UL coils +14°F +140°F



OPTIONS: Electrical connection through cable
 Special powers and voltages
 Self-extinguish

| CODE | | Alternating Current Voltage | Direct Current Voltage (V) | Power ① | | Voltage tolerance | | Connector | Service ED |
|--------------------|--------------------|-----------------------------|----------------------------|--------------------------|--------------------|---------------------|----------------|-----------|------------|
| Class F insulation | Class H insulation | | | Alternating Current (VA) | Direct Current (W) | Alternating current | Direct current | | |
| 30A | 32A | 12V 50/60Hz | - | 8 | - | +15% | - | 10348000 | 100% |
| 30B | 32B | 24V 50/60Hz | - | | | | | | |
| 30C | 32C | 48V 50/60Hz | - | | | | | | |
| 30D | 32D | 110V 50/60Hz | - | | | | | | |
| 30E | 32E | 220/230V 50/60Hz | - | | | | | | |
| 30F | 32F | 240V 50/60Hz | - | | | | | | |
| 30G | 32G | 380V 50/60Hz | - | | | | | | |
| 300 | 320 | - | 12 | - | 6.5 | - | ±10% | | |
| 301 | 321 | - | 24 | | | | | | |
| 302 | 322 | - | 48 | | | | | | |

Certified versions 

| | | | | | | | | | |
|---|------|-----------|----|---|-----|------|------|----------|------|
| - | U35B | 24V 60Hz | - | 8 | - | ±10% | - | 10348000 | 100% |
| - | U35D | 120V 60Hz | - | | | | | | |
| - | U35F | 240V 60Hz | - | | | | | | |
| - | U350 | - | 12 | - | 6.5 | - | ±10% | | |
| - | U351 | - | 24 | | | | | | |

Certified versions 

| | | | | | | | | | |
|---|------|---------|---|---|---|--------------|---|----------|------|
| - | V32E | 220/230 | - | 8 | - | +15% -10% | - | 10348000 | 100% |
|---|------|---------|---|---|---|--------------|---|----------|------|

① Considering nominal voltage and an ambient temperature of +68°F (+20°C)