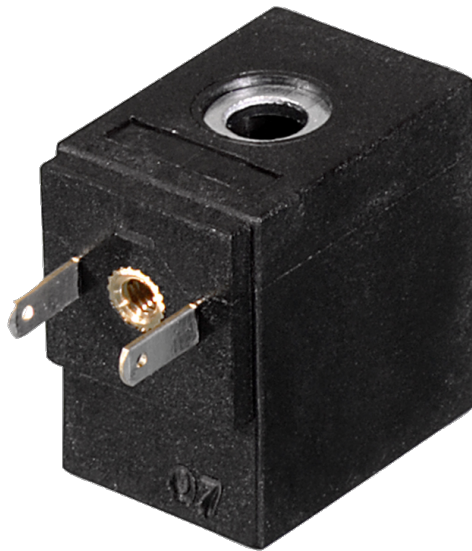


6 Series Coils

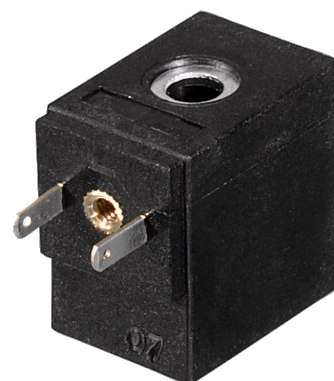


800.909.4988
info@rankinusa.com

RANKIN 
COMPONENTS THAT AUTOMATE

DESCRIPTION

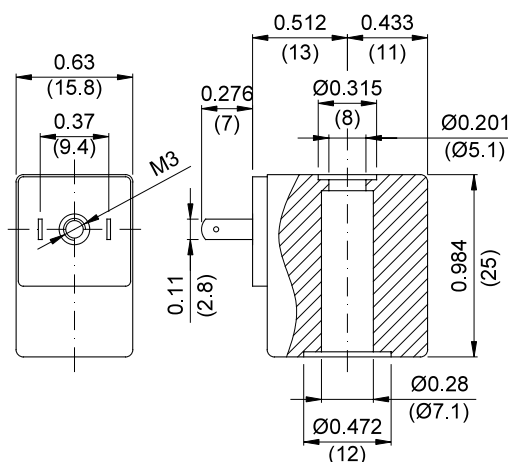
Encapsulated coil incorporating the magnetic circuit.
 Fixing by means of a central nut.
 Electrical connection according to AMP 2.8x0.5.



CONSTRUCTION

Encapsulation: Fibre-glass Nylon
 Class F Zinc-plated steel
 Magnetic circuit Copper covered with
 Windings class H insulation

OPTIONS: Electrical connection through cable
 Special powers and voltages
 Self-extinguish



CODE Class F insulation	Direct Current Voltage (V)	Power ① Direct Current (W)	Voltage tolerance	Connector	Service ED
60014	12	4	±5%	10348040	100%
60048	12	8			25%
60114	24	4			100%
60148	24	8			25%
60012	12	2			100%
60112	24	2			100%

① Considering nominal voltage and an ambient temperature of +68°F (+20°C)