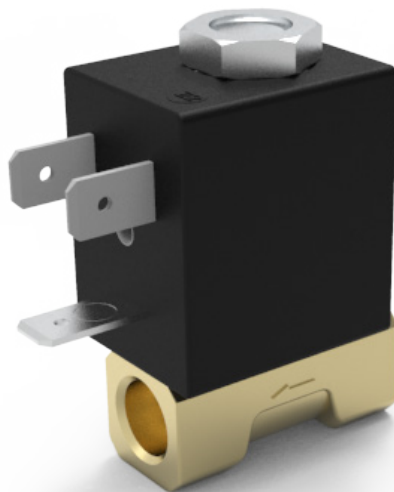


W105 Series Valves



800.909.4988
info@rankinusa.com

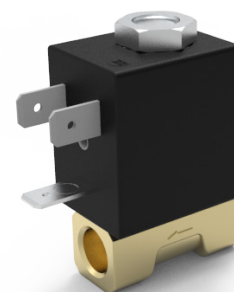
RANKIN 
COMPONENTS THAT AUTOMATE

DESCRIPTION

Solenoid valve 2 way normally closed
direct acting poppet type

CONSTRUCTION

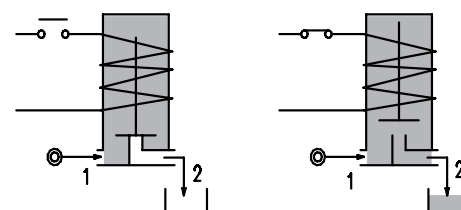
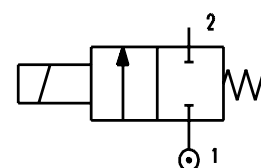
Body	Brass
Armature tube	Brass
Plunger and core	EN 1.4106
Springs	EN 1.4310
Seal material	FPM



2

FEATURES

Maximum allowable pressure PS 50bar
Maximum fluid viscosity 25 cSt (mm²/s)
Ambient temperature: from -10°C to +80°C according to the coil
Universal mounting position



CODE ②	Connection G ISO 228	Orifice mm	Kv m ³ /h	Differential pressure bar			Nominal power			Coil		Seal	Temp. range °C
				Min	Max		AC Inrush	VA Holding	DC Watt	Series	Width		
					AC	DC							
W105AV15///...	1/8"	1.5	0.06	0	14	3	12	8	6.5	3	22	FPM=V	-10 +140

② Coil

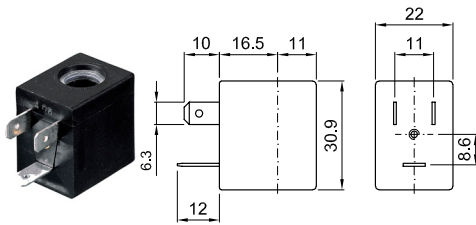
Please refer to next page for coil codes.

Series W105

Coils ②	Alternating Current 50/60Hz (V)							Direct Current (V)			Electrical Connection	Connectors
	12	24	48	110	220 230	240	380	12	24	48		
Series 3 Width 22	30A	30B	30C	30D	30E	30F	30G	300	301	302	DIN 46244	PG9 CODE 10348000

DESCRIPTION
 Class H insulation
 Voltage tolerance
 AC +6% -15%
 DC +10% -5%
 Protection class
 IP65 with connector fitted
 IP00 without connector
 Continuous service ED100%

OPTIONS
 Special coil voltage
 Special coil powers



OVERALL DIMENSION

