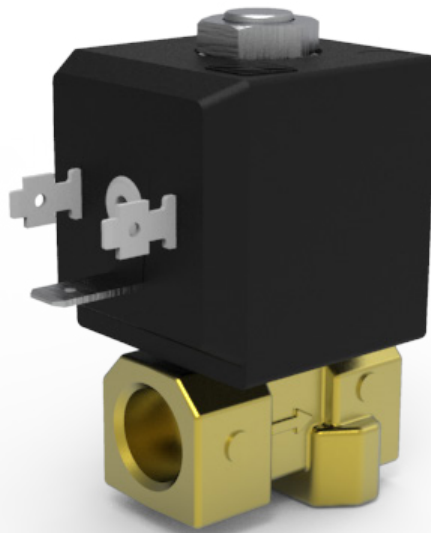


W106 Series Valves



800.909.4988
info@rankinusa.com

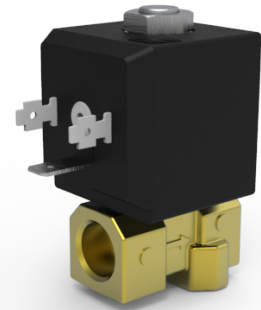
RANKIN 
COMPONENTS THAT AUTOMATE

DESCRIPTION

Solenoid valve 2 way normally closed
direct acting poppet type

CONSTRUCTION

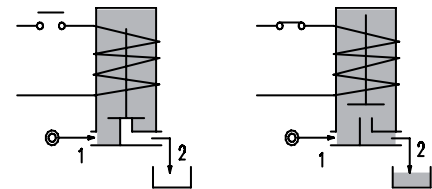
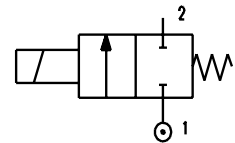
Body	Brass
Armature tube	Brass
Plunger and core	EN 1.4106
Springs	EN 1.4310
Seal material	FPM



2

FEATURES

Maximum allowable pressure PS 50bar
Maximum fluid viscosity 25 cSt (mm²/s)
Ambient temperature: from -10°C to +80°C according to the coil
Universal mounting position



CODE ②	Connection G ISO 228	Orifice mm	Kv m ³ /h	Differential pressure bar			Nominal power			Coil		Seal	Temp. range °C
				Min	Max		AC Inrush	VA Holding	DC Watt	Series	Width		
					AC	DC							
W106BV30///...	1/4"	3	0.17	0	9	5	-	22	16	1597*	30	FPM=V	-10 +140
W106BV40///...		4	0.25	0	6	4							

② Coil

Series W106 can be provided only with coil mounted.
Please refer to next page for coil codes.

Series W106

Coils ②	Alternating Current		Direct Current		Electrical Connection	Connectors
	110 - 120 V / 60Hz	220 - 230 V / 50 - 60 Hz	12 V	24 V		
Series 1597* Width 33 - 17 VA	-	15972	-	-	DIN 43650A	PG9 CODE 10349000
Series 1597* Width 33 22 VA - 16W	15973	-	15974	15975		

DESCRIPTION

Class H insulation
Voltage tolerance
AC +6% -15%
DC +10% -5%
Protection class
IP65 with connector fitted
IP00 without connector
Continuous service ED100%

OPTIONS

Special coil voltage
Special coil powers

OVERALL DIMENSION

